

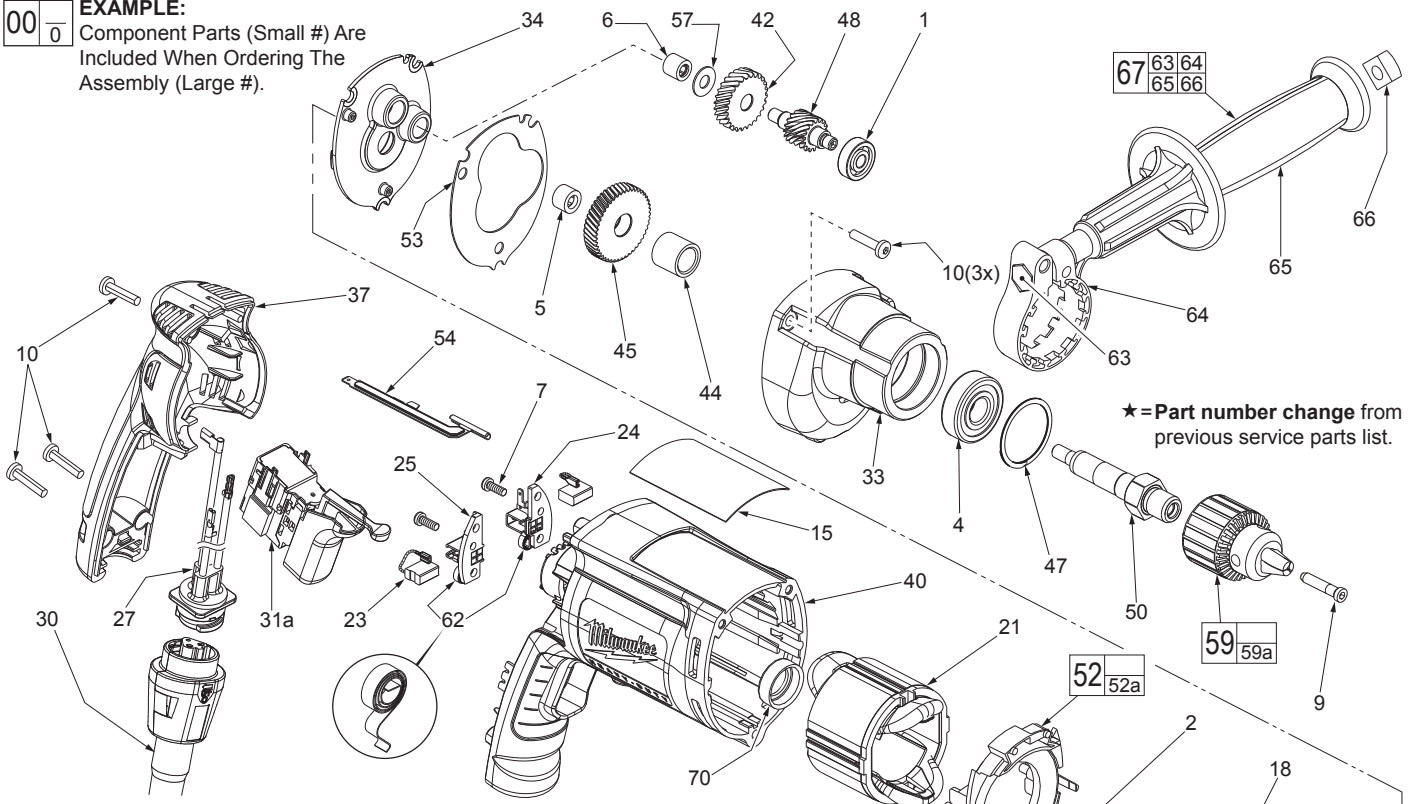


# SERVICE PARTS LIST

**BULLETIN NO.**  
**54-06-2803**

|  |         |  |            |
|--|---------|--|------------|
| SPECIFY CATALOG NO. AND SERIAL NO. WHEN ORDERING PARTS |         | REVISED BULLETIN                                 | DATE       |
| <b>1/4" PISTOL GRIP DRILL</b>                          |         | 54-06-2802                                       | Sept. 2013 |
| CATALOG NO.  | 0100-20 | WIRING INSTRUCTION<br><b>See Pages 2 &amp; 3</b> |            |
| STARTING SERIAL NO.                                    | 058D    |  |            |

**EXAMPLE:**  
Component Parts (Small #) Are Included When Ordering The Assembly (Large #).



★ = Part number change from previous service parts list.

| FIG. | PART NO.   | DESCRIPTION OF PART                  | NO. REQ. |
|------|------------|--------------------------------------|----------|
| 1    | 02-04-0640 | Ball Bearing                         | (1)      |
| 2    | 02-04-0645 | Ball Bearing                         | (1)      |
| 3    | 02-04-0852 | Ball Bearing                         | (1)      |
| 4    | 02-04-1229 | Ball Bearing                         | (1)      |
| 5    | 02-50-1611 | Needle Bearing                       | (1)      |
| 6    | 02-50-2400 | Needle Bearing                       | (1)      |
| 7    | 05-88-1610 | M3.5 x 10 Pan Hd. Plastite T-10      | (2)      |
| 9    | 45-04-0750 | Chuck Screw                          | (1)      |
| 10   | 06-82-7275 | 7-18 x 3/4 Slotted Plastite T-20     | (6)      |
| 15   | 12-99-2565 | Service Nameplate                    | (1)      |
| 18   | 16-10-2215 | Armature                             | (1)      |
| 21   | 18-07-7210 | Field                                | (1)      |
| 23   | 22-18-1310 | Brush Assembly                       | (2)      |
| 24   | 22-20-0090 | Left Brush Holder                    | (1)      |
| 25   | 22-20-0095 | Right Brush Holder                   | (1)      |
| 27   | 22-56-1010 | Pin Housing Assembly                 | (1)      |
| 30   | 48-76-4008 | Quik-Lok Cord Set                    | (1)      |
| 31a  | 23-66-2605 | Switch (Defond) See page 2 wiring    | (1)      |
| 31b  | 23-66-2585 | Switch (Marquardt) See page 3 wiring | (1)      |
| 33   | 28-14-2390 | Gearcase                             | (1)      |
| 34   | 28-28-2320 | Diaphragm                            | (1)      |
| 37   | 31-15-2030 | Handle Halve                         | (1)      |
| ★ 40 | 31-50-0525 | Motor Housing                        | (1)      |
| 42   | 32-40-0100 | Intermediate Gear                    | (1)      |
| 44   | 45-36-1095 | Spindle Spacer                       | (1)      |
| 45   | 32-75-0115 | Spindle Gear                         | (1)      |
| 47   | 34-80-2300 | Retaining Ring                       | (1)      |
| 48   | 36-66-0125 | Intermediate Shaft                   | (1)      |
| 50   | 38-50-5750 | Output Spindle                       | (1)      |
| 52   | 42-14-0460 | Baffle Assembly                      | (1)      |
| 52a  | 45-30-0030 | Slug (Not shown)                     | (2)      |
| 53   | 43-44-0985 | Gasket                               | (1)      |
| 54   | 44-60-1700 | Ground Pin                           | (1)      |
| 57   | 45-88-7990 | Thrust Washer                        | (1)      |
| 59   | 48-66-0070 | 1/4" Chuck                           | (1)      |
| 59a  | 48-66-3200 | Chuck Key (Not Shown)                | (1)      |
| 62   | 23-52-1610 | Brush Spring                         | (2)      |
| 63   | 06-75-2850 | 3/8-16 x 5-1/2" Hex Cap Screw        | (1)      |
| 64   | 42-68-0800 | Side Handle Clamp                    | (1)      |
| 65   | 43-62-0845 | Side Handle                          | (1)      |
| 66   | 06-54-0325 | 3/8-16 Square Nut                    | (1)      |

| FIG. | PART NO.   | DESCRIPTION OF PART                    | NO. REQ. |
|------|------------|--|----------|
| 67   | 49-15-0265 | Side Handle Assembly                   | (1)      |
| 68   | 48-66-4080 | Chuck Key Holder (Not Shown)           | (1)      |
| ★ 70 | 43-86-0125 | Bearing Cup                            | (1)      |
|      | 23-94-0490 | White Leadwire Assy. (See pages 2 & 3) | (1)      |
|      | 23-94-0495 | Red Leadwire Assy. (See pages 2 & 3)   | (1)      |
|      | 31-53-0205 | Lock Button Plug (Not Shown)           | (1)      |

**LUBRICATION (Type "Y" Grease, No. 49-08-5270)**  
 • Place 5 gm. (.02 oz.) of grease on top of the inserted intermediate ball bearing (1) and on the intermediate pinion (48).

• After inserting all gearing, place 13 gm. (.46 oz.) of grease at the armature pinion location in the gearcase (33) and fill to the top of the intermediate gear (42). Grease must contact at least 25% of the intermediate gear teeth.

**Before assembly, lightly coat all press fit areas with lightweight spindle oil.**

**FIG. NOTES:**  
 4,45 Support the output ball bearing inside the gearcase before pressing off the spindle gear.

5,6 Needle bearings to be pressed flush to .010 under flush from the end which has the vendors identification.

**MILWAUKEE ELECTRIC TOOL CORPORATION**  
 13135 W. LISBON RD., BROOKFIELD, WI 53005  
 Dwg. 1