



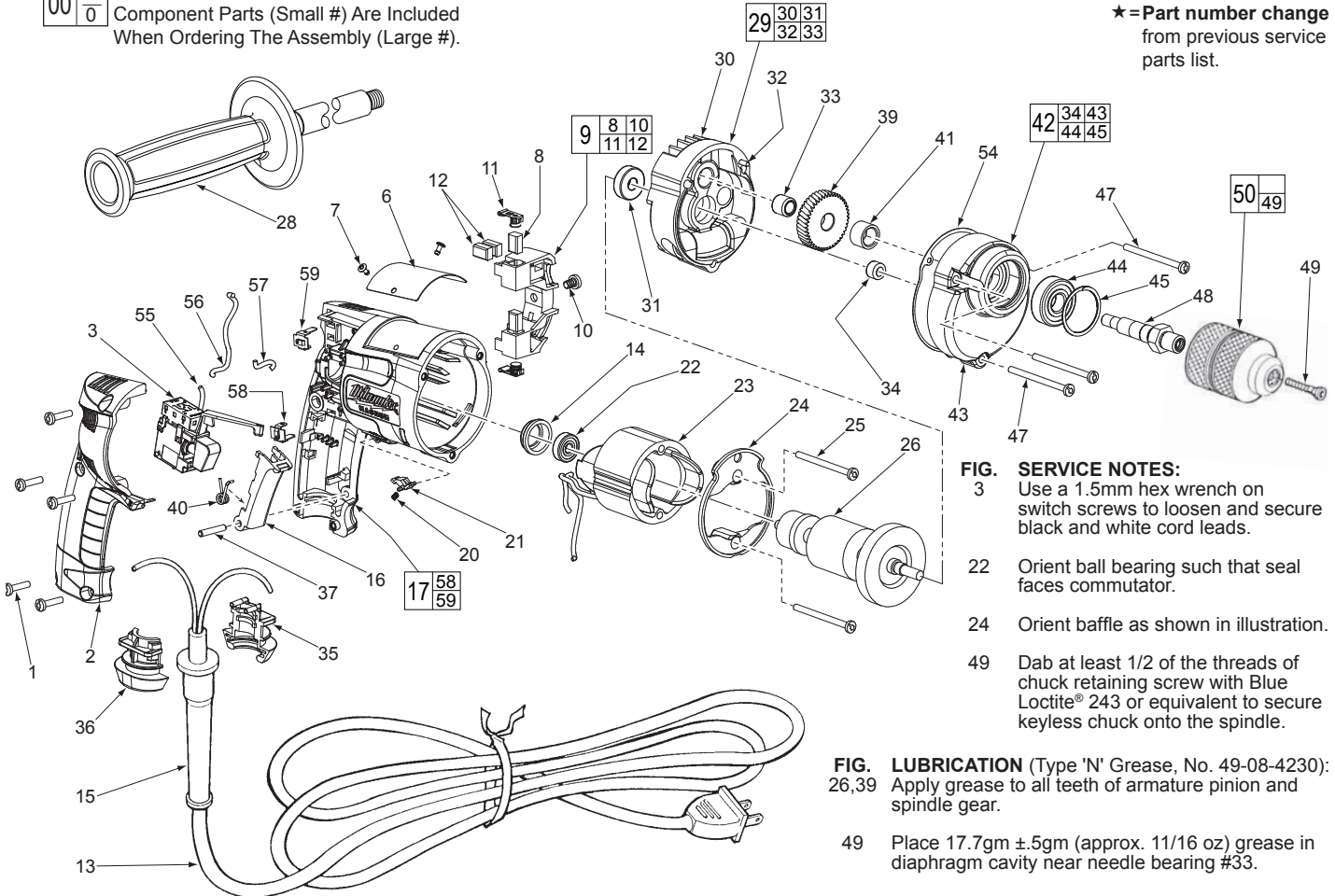
# SERVICE PARTS LIST

**BULLETIN NO.**  
**54-06-1152**

|   |                                 |  |                   |
|---|---------------------------------|--|-------------------|
| <b>SPECIFY CATALOG NO. AND SERIAL NO. WHEN ORDERING PARTS</b> |                                 | REVISED BULLETIN<br>54-06-1151                 | DATE<br>June 2009 |
| <b>3/8" KEYLESS MAGNUM HOLE-SHOOTER</b>                       |                                 |  |                   |
| <b>CATALOG NO.</b> 0233-20                                    | <b>STARTING SERIAL NO.</b> 924C | <b>WIRING INSTRUCTION</b><br><b>58-01-1651</b> |                   |

**EXAMPLE:**  
Component Parts (Small #) Are Included  
When Ordering The Assembly (Large #).

★ = Part number change  
from previous service  
parts list.



**FIG. SERVICE NOTES:**  
3 Use a 1.5mm hex wrench on switch screws to loosen and secure black and white cord leads.  
22 Orient ball bearing such that seal faces commutator.  
24 Orient baffle as shown in illustration.  
49 Dab at least 1/2 of the threads of chuck retaining screw with Blue Loctite® 243 or equivalent to secure keyless chuck onto the spindle.

**FIG. LUBRICATION** (Type 'N' Grease, No. 49-08-4230):  
26,39 Apply grease to all teeth of armature pinion and spindle gear.  
49 Place 17.7gm ±.5gm (approx. 11/16 oz) grease in diaphragm cavity near needle bearing #33.

| FIG. | PART NO.   | DESCRIPTION OF PART                    | NO. REQ. |
|------|------------|--|----------|
| 1    | 06-82-7266 | 7-1/8 x 11/16" Pan Hd. Plastite T-20   | (5)      |
| ★ 2  | 31-15-0405 | Handle Cover                           | (1)      |
| ★ 3  | 23-66-1705 | Trigger Speed Control Reversing Switch | (1)      |
| ★ 6  | 12-99-0077 | Nameplate Blank                        | (1)      |
| 7    | 06-72-1720 | Nameplate Rivet                        | (2)      |
| ★ 8  | 22-16-0295 | Carbon Brush                           | (2)      |
| ★ 9  | 22-22-0352 | Brush Holder Assembly                  | (1)      |
| ★ 10 | 23-44-0200 | Brush Holder Screw                     | (1)      |
| 11   | 22-20-0345 | Brush Spring Assembly                  | (2)      |
| ★ 12 | 22-16-0295 | Carbon Brush (Spares)                  | (2)      |
| 13   | 22-64-0216 | Cord Set                               | (1)      |
| 14   | 22-72-0100 | Bearing Cup                            | (1)      |
| 15   | 44-76-0210 | Cord Protector                         | (1)      |
| ★ 16 | 45-72-0085 | Trigger                                | (1)      |
| ★ 17 | 14-38-0542 | Motor Housing Assembly                 | (1)      |
| 20   | 40-50-0085 | Lock Button Spring                     | (1)      |
| 21   | 42-42-0460 | Lock Button                            | (1)      |
| 22   | 02-04-0645 | Ball Bearing                           | (1)      |
| ★ 23 | 18-11-0076 | 120 Volt Field                         | (1)      |
| ★ 24 | 42-14-0405 | Baffle                                 | (1)      |
| 25   | 06-82-7398 | 7-18 x 2-1/16" Pan Hd. Plast. T-20     | (2)      |
| ★ 26 | 16-10-0802 | 120 V. Armature Assembly               | (1)      |
| ★ 28 | 43-62-0886 | Side Handle Assembly                   | (1)      |
| ★ 29 | 14-13-0498 | Diaphragm Assembly                     | (1)      |
| 30   | -----      | Diaphragm                              | (1)      |
| 31   | 02-04-0851 | Ball Bearing                           | (1)      |
| 32   | 06-65-0825 | 1/8 x 1/2 Groove Pin No. 5             | (1)      |
| 33   | 02-50-2435 | Needle Bearing                         | (1)      |
| 34   | 42-40-0045 | Bushing                                | (1)      |

| FIG. | PART NO.   | DESCRIPTION OF PART               | NO. REQ. |
|------|------------|-----------------------------------|----------|
| 35   | 31-17-0260 | Cord Clamp - Lower                | (1)      |
| 36   | 31-17-0270 | Cord Clamp - Upper                | (1)      |
| ★ 37 | 06-65-0105 | 4 x 22 Pin                        | (1)      |
| 39   | 32-75-2915 | Spindle Gear                      | (1)      |
| ★ 40 | 40-50-0525 | Torsion Spring                    | (1)      |
| 41   | 45-36-1105 | Spacer                            | (1)      |
| 42   | 14-30-0232 | Gearcase Assembly                 | (1)      |
| 43   | -----      | Gearcase                          | (1)      |
| 44   | 02-04-1229 | Ball Bearing                      | (1)      |
| 45   | 34-80-2300 | Retaining Ring                    | (1)      |
| 47   | 06-82-7380 | 7-18 x 1-7/8" Pan Hd. Plast. T-20 | (3)      |
| 48   | 38-50-6100 | Spindle - Single Reduction        | (1)      |
| 49   | 45-04-0750 | Chuck Retaining Screw - L.H.Thd.  | (1)      |
| 50   | 48-66-1530 | 3/8" Keyless Chuck                | (1)      |
| 54   | 43-44-0913 | Gasket                            | (1)      |
| ★ 55 | 23-94-6248 | Leadwire Assembly, Blue           | (1)      |
| ★ 56 | 23-94-6336 | Leadwire Assembly, Black          | (1)      |
| ★ 57 | 23-94-6405 | Leadwire Assembly, White          | (1)      |
| ★ 58 | 23-74-1030 | Terminal, Lower                   | (1)      |
| ★ 59 | 23-74-1040 | Terminal, Upper                   | (1)      |
|      | 10-98-5996 | Warning Label (Not Shown)         | (1)      |

**MILWAUKEE ELECTRIC TOOL CORPORATION**  
13135 W. LISBON RD., BROOKFIELD, WI 53005  
Drwg. 3