



SERVICE PARTS LIST

BULLETIN NO.
54-06-0240

SPECIFY CATALOG NO. AND SERIAL NO. WHEN ORDERING PARTS		REVISED BULLETIN	DATE
3/8" (10mm) DRILL			Sept. 2009
CATALOG NO. 0240-20	STARTING SERIAL NO. C32A	WIRING INSTRUCTION 58-01-0205	

EXAMPLE:

00	0
----	---

 Component Parts (Small #) Are Included When Ordering The Assembly (Large #).

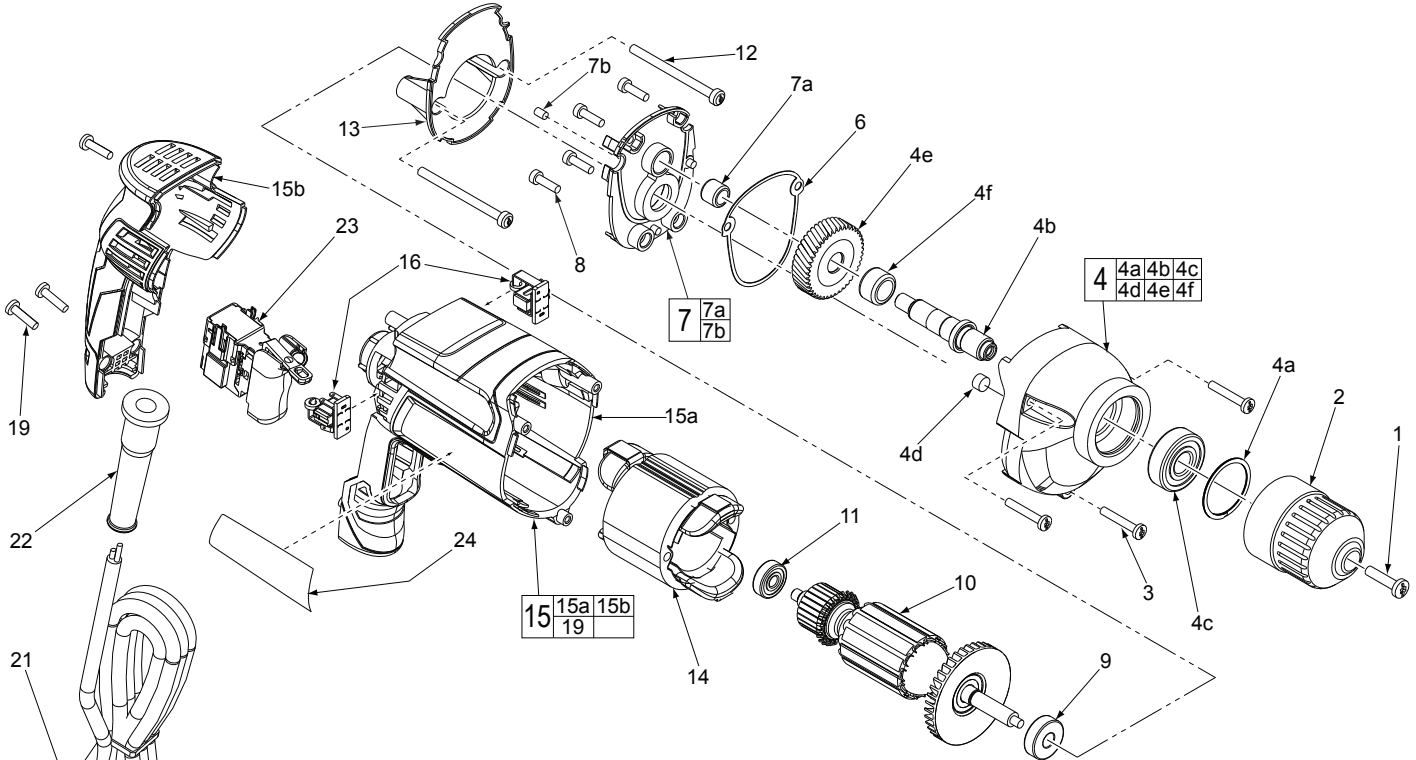


FIG.	PART NO.	DESCRIPTION OF PART	NO. REQ.
1	05-81-0085	12-28 UNF LH Phillips Hd. Chuck Screw	(1)
2	42-66-0100	3/8" Keyless Chuck	(1)
3	05-88-1650	M4 x 25.4mm Pan Hd. Slit. T-20 Screw	(3)
4	28-14-0065	Gearcase Assembly	(1)
4a	34-80-2300	Retaining Ring	(1)
4b	-----	Spindle Shaft	(1)
4c	02-04-1229	Ball Bearing	(1)
4d	42-40-0045	Bushing	(1)
4e	-----	Spindle Gear	(1)
4f	45-36-1100	Spindle Spacer	(1)
6	43-44-0935	Gasket	(1)
7	28-28-0070	Diaphragm Assembly	(1)
7a	02-50-0030	Needle Bearing	(1)
7b	31-53-0240	Bearing Retaining Plug	(1)
8	05-88-1210	M4 x 14mm Pan Hd. T-20 Screw	(4)
9	02-04-0620	Ball Bearing	(1)
10	16-10-0085	Service Armature	(1)
11	02-04-0645	Ball Bearing	(1)
12	06-81-0130	8-32 x 57mm Pan Hd. T-20 Screw	(2)
13	31-05-0115	Baffle	(1)
14	18-07-0085	Service Field	(1)
15	31-50-0215	Motor Housing and Handle Kit	(1)
15a	-----	Motor Housing	(1)
15b	-----	Handle Cover	(1)
16	22-22-1560	Carbon Brush Assembly	(2)
17	23-94-0455	Leadwire Assy. (Not Shown, See 58-01-0205)	(2)
19	06-82-7275	7-18 x 3/4" Pan Hd. Slit. Plast. T-20 Screw	(3)
21	22-64-0216	Power Cord	(1)
22	44-76-0210	Cord Protector	(1)
23	23-66-0445	Variable Speed Switch	(1)
24	12-20-0085	Service Nameplate Kit	(1)

FIG. NOTES:

- 8 Apply Type 609 Loctite® (or equivalent) to the threads of the Screws that join the Diaphragm Assembly (7) to the Gearcase Assembly (4).
- 11 Orient Ball Bearing so the seal faces the commutator of the Armature (10).

FIG. LUBRICATION:

- 4 Place 8 grams (.28 ounce) of Type 'Y' Grease, 49-08-5270 in the lower cavity of the Gearcase (4).
- 4e, 10 Be sure that all pinion teeth on Armature (10) and all teeth on Spindle Gear (4e) are liberally coated with Type 'Y' Grease.

SCREW / CHUCK TORQUE CHART

Fig.	Number	Description	Seat Torque	
			(kg.-cm)	(in.-lbs.)
1	05-81-0085	Chuck Screw	45-55	39-48
2	42-66-0100	3/8" Keyless Chuck	105-135	91-117
3	05-88-1650	Gearcase Screws	14-22	12-19
8	05-88-1210	Diaphragm Screws	20-30	17-26
12	06-81-0130	Field Screws	14-22	12-19
19	06-82-7675	Handle Cover Screws	12-20	10-17

MILWAUKEE ELECTRIC TOOL CORPORATION

13135 W. Lisbon Road, Brookfield, WI 53005

Drwg. 1