



SERVICE PARTS LIST

BULLETIN NO.
54-24-2490

SPECIFY CATALOG NO. AND SERIAL NO. WHEN ORDERING PARTS			REVISED BULLETIN	DATE
Cordless M12™ 3/8" Hammer-Drill				Sept. 2014
CATALOG NO.	2408-20	STARTING SERIAL NO.	WIRING INSTRUCTION SEE PAGE 3	
		F11A		

EXAMPLE:
00 0 Component Parts (Small #)
Are Included When Ordering
The Assembly (Large #).

Original Design
42-70-0055

Improved Design
42-70-0058

M12™ tools utilize two different Housing Connection Clip designs depending on the Handle Set. See page two for details.

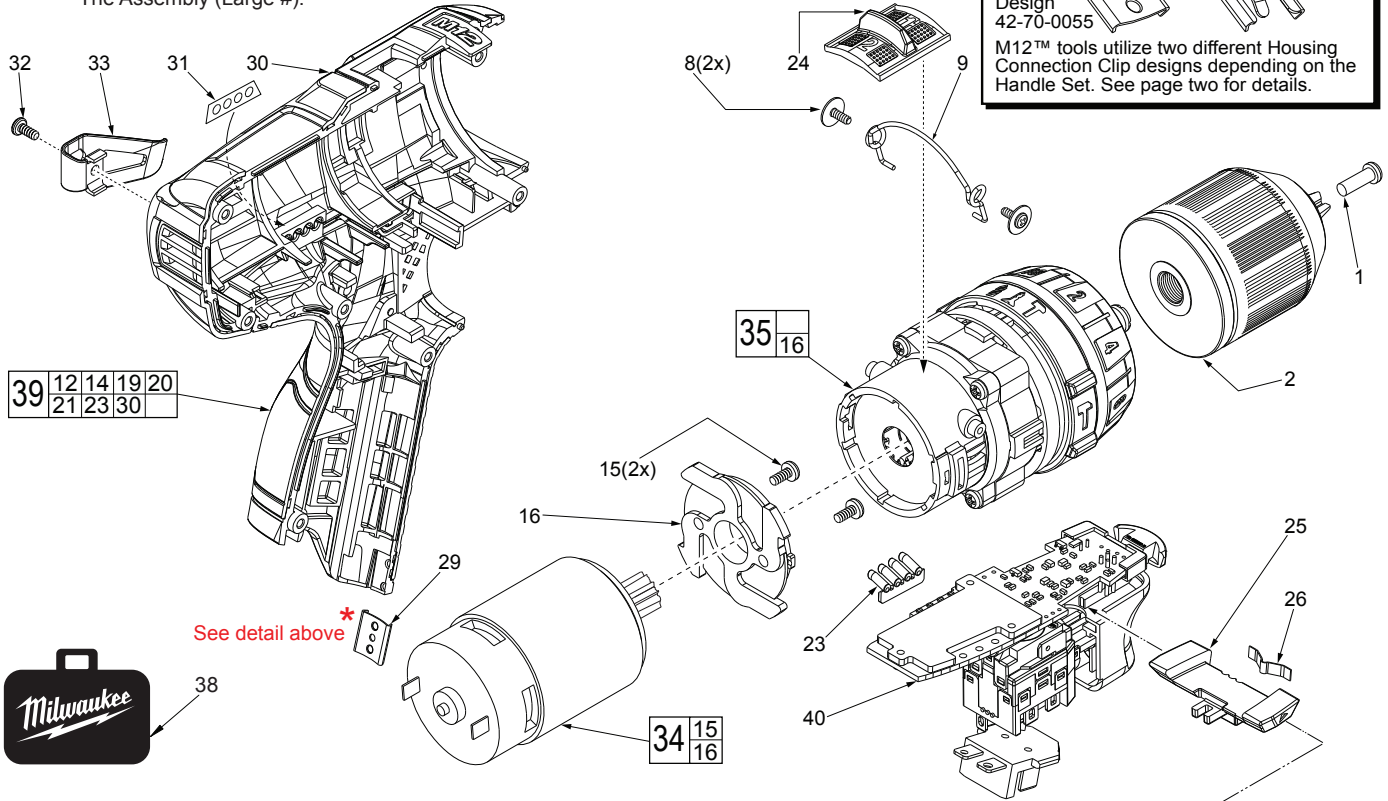


FIG.	PART NO.	DESCRIPTION OF PART	NO. REQ.
	1	M5 x 0.8 x 18.5mm LH Chuck Screw	(1)
	2	3/8" Keyless Chuck	(1)
	8	M2.3 x 4.5mm ST Screw	(2)
	9	Speed Selector Lever	(1)
	12	M3.0 x 14mm Pan Hd. T-10 ST Screw	(7)
	14	Housing Cover (Right Handle Halve)	(1)
	15	M3 x 6mm Screw	(2)
	16	Motor Mount Plate	(1)
	19	Service Nameplate	(1)
	20	Warning Label (Not Shown)	(1)
	23	Light Pipe	(1)
	24	Speed Selector Slide Button	(1)
	25	Forward/Reverse Shuttle	(1)
	26	Shuttle Spring Plate	(1)
	29	Housing Connection Clip	(1)
	30	Housing Support (Left Handle Halve)	(1)
	31	Fuel Gauge Label	(1)
	32	M2.5 x 6mm Pan Hd. Phillips Screw	(1)
	33	Belt Clip	(1)
	34	Service Motor Assembly with Pinion	(1)
	35	Service Gearcase Assembly	(1)
	38	Carrying Case	(1)
	39	Service Housing Set	(1)
	40	Service Switch/Electronics Assembly	(1)

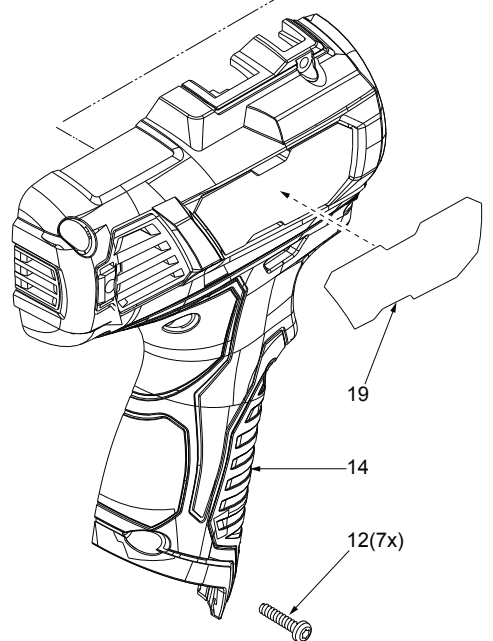


FIG. NOTES:
16,34,35 Service replacement gearcase assembly (35) comes with a motor mount plate (16) that must be removed and discarded when servicing. A motor mount plate already exists on the motor assembly (34).