

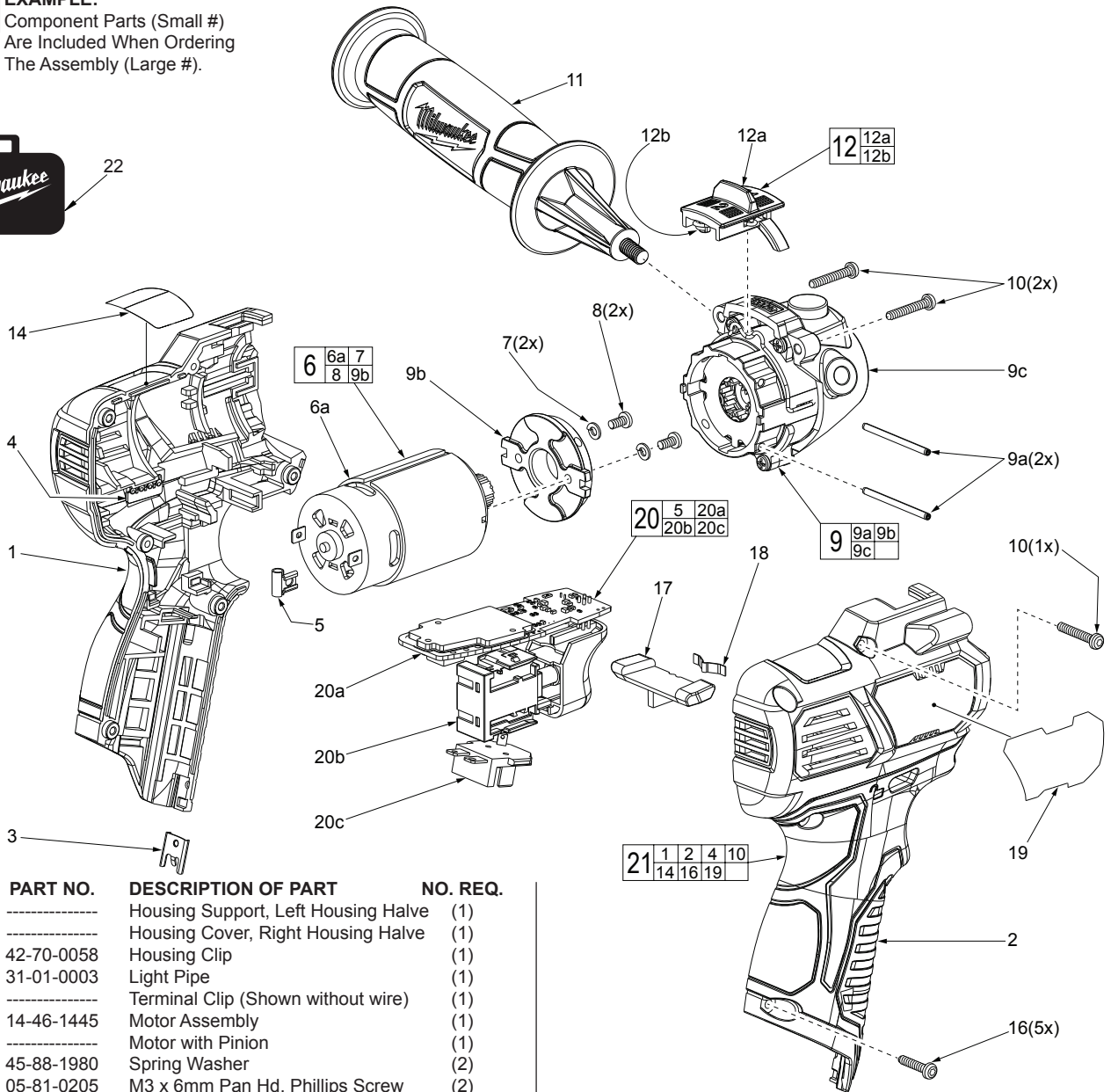


SERVICE PARTS LIST

BULLETIN NO.
54-32-2400

| SPECIFY CATALOG NO. AND SERIAL NO. WHEN ORDERING PARTS | | REVISED BULLETIN | DATE |
|--------------------------------------------------------|---------|---------------------|-----------------------------------------------|
| Cordless M12™ Spot Polisher | | | Apr. 2014 |
| CATALOG NO. | 2438-20 | STARTING SERIAL NO. | F76A |
| | | | WIRING INSTRUCTION SEE REVERSE SIDE |

EXAMPLE:
00 0 Component Parts (Small #)
Are Included When Ordering
The Assembly (Large #).



| FIG. | PART NO. | DESCRIPTION OF PART | NO. REQ. |
|------|------------|-------------------------------------|----------|
| 1 | ----- | Housing Support, Left Housing Halve | (1) |
| 2 | ----- | Housing Cover, Right Housing Halve | (1) |
| 3 | 42-70-0058 | Housing Clip | (1) |
| 4 | 31-01-0003 | Light Pipe | (1) |
| 5 | ----- | Terminal Clip (Shown without wire) | (1) |
| 6 | 14-46-1445 | Motor Assembly | (1) |
| 6a | ----- | Motor with Pinion | (1) |
| 7 | 45-88-1980 | Spring Washer | (2) |
| 8 | 05-81-0205 | M3 x 6mm Pan Hd. Phillips Screw | (2) |
| 9 | 14-46-1385 | Gearbox Assembly | (1) |
| 9a | ----- | Motor Mount Pin | (2) |
| 9b | ----- | Motor Mount Plate | (1) |
| 9c | ----- | Gearbox/Front Housing | (1) |
| 10 | 05-88-0780 | M3 x 18mm Pan Hd. ST T-10 Screw | (3) |
| 11 | 43-62-1100 | Side Handle | (1) |
| 12 | 14-46-1460 | Speed Selector Assembly | (1) |
| 12a | ----- | Speed Selector | (1) |
| 12b | ----- | Torsion Spring | (1) |
| 14 | 10-20-3205 | Warning Label | (1) |
| 15 | ----- | Fuel Gauge Label (Not Shown) | (1) |
| 16 | 06-82-1080 | M3 x 14mm Pan Hd. T-10 ST Screw | (5) |
| 17 | 45-24-0625 | Locking Shuttle | (1) |
| 18 | 40-50-1135 | Spring Plate | (1) |
| 19 | 12-20-2438 | Service Nameplate | (1) |
| 20 | 14-46-1470 | Electronics Assembly | (1) |
| 20a | ----- | PCBA | (1) |
| 20b | ----- | Switch | (1) |
| 20c | ----- | Battery Terminal Connector Block | (1) |

| FIG. | PART NO. | DESCRIPTION OF PART | NO. REQ. |
|------|------------|-----------------------------------|----------|
| 21 | 31-44-2438 | Handle Kit | (1) |
| 22 | 42-55-2438 | Contractors Bag | (1) |
| 23 | 49-36-2438 | 5 Piece Accessory Kit (Not Shown) | (1) |
| | | Consisting of: | |
| | | 3" Wool Pad w/ Back Recess | (1) |
| | | 3" White Foam Pad | (1) |
| | | 3" Yellow Foam Pad | (1) |
| | 49-36-0800 | 2" Backing Pad w/ M8 x 1 Thread | (1) |
| | 49-36-0805 | 3" Backing Pad w/ M8 x 1 Thread | (1) |

FIG. 6,9,9b NOTES:
Service replacement gearcase assembly (9) comes with a motor mount plate (9b) that must be removed and discarded when servicing. A motor mount plate already exists on the motor assembly (6).

MILWAUKEE ELECTRIC TOOL CORPORATION
13135 W. Lisbon Road, Brookfield, WI 53005
Drwg. 1