



SERVICE PARTS LIST

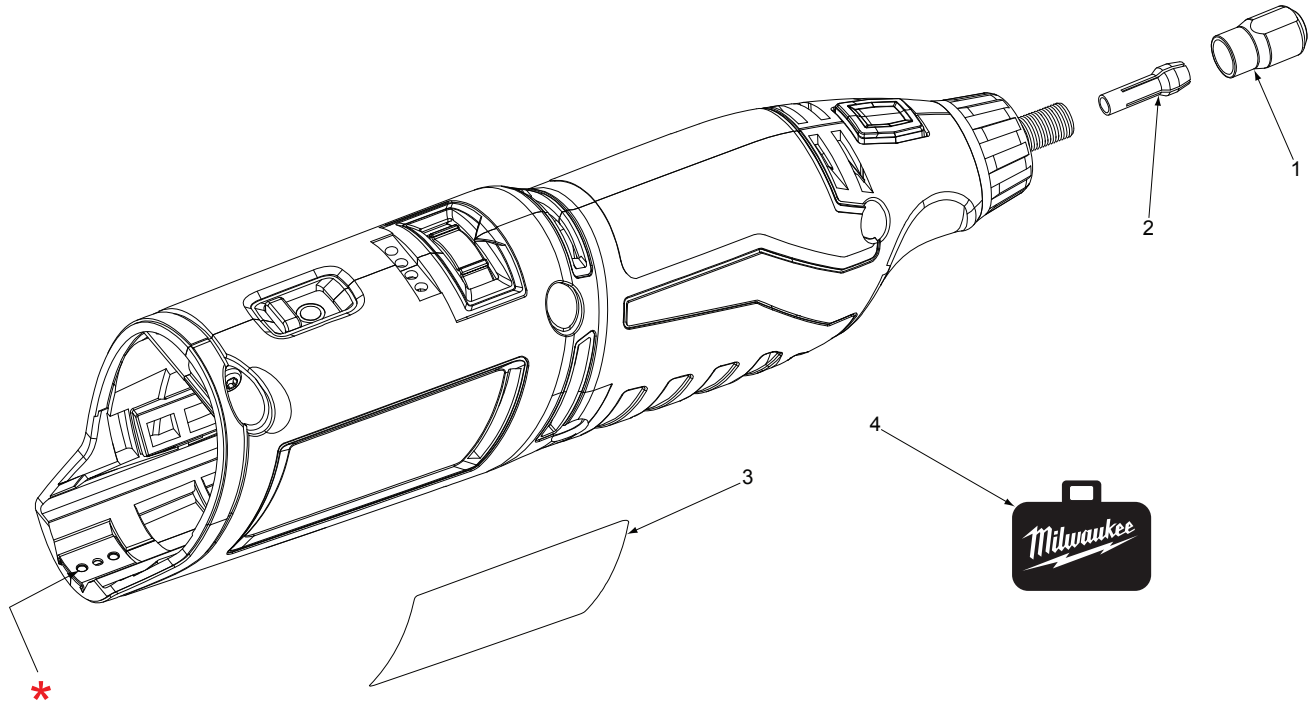
BULLETIN NO.
54-22-2460

SPECIFY CATALOG NO. AND SERIAL NO. WHEN ORDERING PARTS		REVISED BULLETIN	DATE
M12™ ROTARY TOOL			Feb. 2014
CATALOG NO.	2460-20	SERIAL NUMBER	C81A
WIRING INSTRUCTION			

EXAMPLE:



Component Parts (Small #)
Are Included When Ordering
The Assembly (Large #).



 Original Design 42-70-0055	 42-70-0058 Improved Design
-----------------------------------	-----------------------------------

M12™ tools utilize two different Housing Connection Clip designs depending on the Handle Set . See page two for details.

FIG.	PART NO.	DESCRIPTION OF PART	NO. REQ.
1	44-40-0770	Collet Nut	(1)
2	42-77-0400	1/8" Collet	(1)
3	-----	Service Nameplate	(1)
4	42-55-2460	Storage Bag	(1)
5	10-20-3675	Warning Label (Not Shown)	(1)
6	45-96-0400	Collet Nut Wrench (Not Shown)	(1)

FIG. 3,5 **NOTES**
A clean, dry surface is essential for proper performance for any adhesive system. The area intended for application of any adhesive label or nameplate must be prepared by cleaning with isopropyl alcohol. The solvent is to be applied with a clean, lint free applicator and the surface allowed to dry before applying the label or nameplate.