



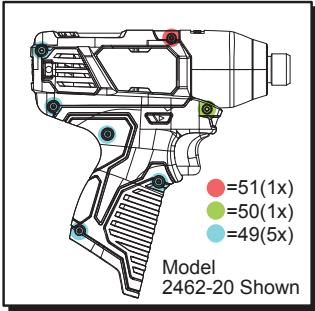
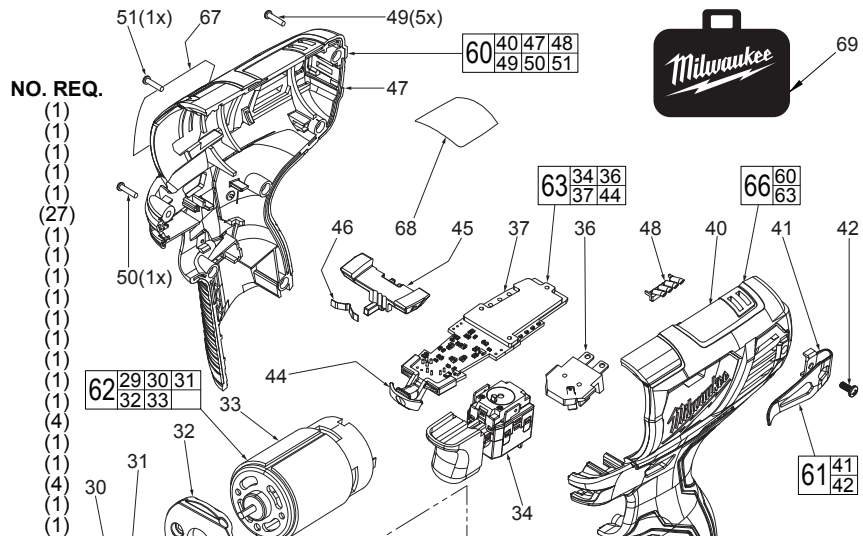
SERVICE PARTS LIST

BULLETIN NO.
54-26-2400

SPECIFY CATALOG NO. AND SERIAL NO. WHEN ORDERING PARTS		REVISED BULLETIN	DATE
M12™ 1/4" SQUARE IMPACT WRENCH			June 2013
CATALOG NO. 2461-20	STARTING SERIAL NO. F04A	WIRING INSTRUCTION SEE PAGE 2	

EXAMPLE:
00 0 Component Parts (Small #) Are Included
When Ordering The Assembly (Large #).

FIG.	PART NO.	DESCRIPTION OF PART
5	14-30-0130	Gearcase Assembly with Bushing
8	45-88-2135	Nylon Ring
10	-----	1/4" Square Anvil
11	02-02-1300	5.0mm Steel Ball
12	-----	Hammer
13	-----	3.0mm Steel Ball
14	-----	Washer
15	-----	Compression Spring
16	-----	Retaining Ring
17	-----	Washer
18	-----	Washer
19	-----	Ball Bearing
20	-----	Gear Housing
21	-----	4.7mm Steel Ball
22	-----	Cam Shaft
23	-----	2nd Stage Planet Gear
24	-----	2nd Stage Ring Gear
25	-----	2nd Stage Sun Gear and Carriage
26	-----	1st Stage Planet Gear
27	-----	1st Stage Ring Gear
28	-----	Washer



59	12	13	14	15	16	17	18	19	20
	21	22	23	24	25	26	27	28	

NOTE: Impact Assembly #59 comes completely assembled and lubricated.

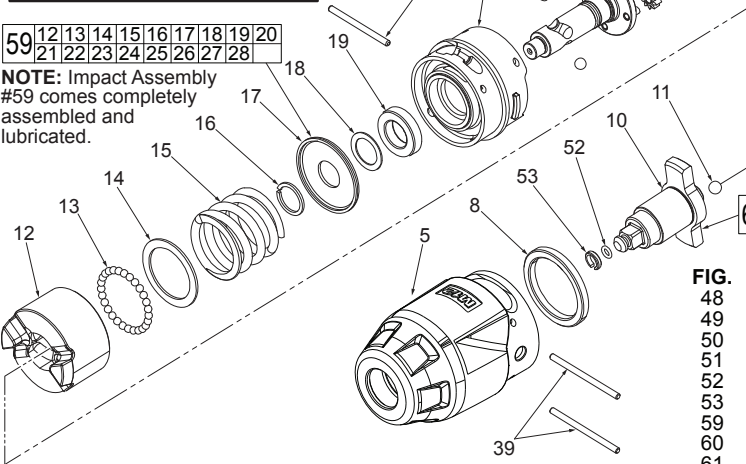


FIG.	PART NO.	DESCRIPTION OF PART	NO. REQ.
29	-----	Motor Pinion	(1)
30	-----	M3.0 Screw	(2)
31	-----	Lock Washer	(2)
32	-----	Motor Mounting Bracket	(1)
33	-----	Motor	(1)
34	-----	Switch	(1)
36	-----	Battery Contact Plate	(1)
37	-----	PCBA	(1)
38	06-65-0022	M2.5 x 30mm Pin	(2)
39	06-65-0502	M2.5 x 36.7mm Pin	(2)
40	-----	Left Handle Halve	(1)
41	-----	Belt Clip	(1)
42	-----	M3.0 Screw	(1)
43	42-70-0055	Housing Clip	(1)
44	-----	LED Lens	(1)
45	45-24-0077	Forward/Reverse Shuttle	(1)
46	40-50-1135	Spring Plate	(1)
47	-----	Right Handle Halve	(1)

IMPORTANT:
If during Motor replacement the gearing from the Impact Assembly becomes dislodged, it is to be noted that the Ring Gears #24 and #27 and the Planet Gears #23 and #26 look the same but are different! The 1st stage gearing (26 and 27) are marked with etched holes as shown. The 2nd stage gearing will not have these markings.

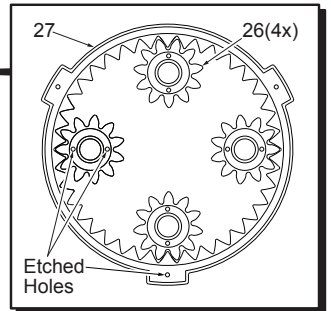


FIG.	PART NO.	DESCRIPTION OF PART	NO. REQ.
48	31-01-0003	Light Pipe	(1)
49	06-82-1080	M3 x 14mm Pan Hd. Plast. T-10 Screw	(5)
50	06-82-6350	M3 x 16mm Pan Hd. Plast. T-10 Screw	(1)
51	06-82-7336	M3 x 20mm Pan Hd. Plast. T-10 Screw	(1)
52	34-40-1880	O-Ring - 1/4" Square Anvil	(1)
53	44-90-1070	Friction Ring - 1/4" Square Anvil	(1)
59	14-29-0022	Impact Assembly	(1)
60	31-50-0005	Handle Set	(1)
61	42-70-0490	Belt Clip Assembly	(1)
62	23-30-0430	Motor Assembly	(1)
63	23-66-0212	Electronics Assembly	(1)
65	42-06-1035	1/4" Square Anvil Assembly	(1)
66	31-50-0315	Handle/Electronics Assembly	(1)
67	12-20-2485	Service Nameplate	(1)
68	10-20-2952	Warning Label	(1)
69	42-55-2461	Carrying Case	(1)

FIG. LUBRICATION (Type 'J' Grease, No. 49-08-4220):

- 5 Coat inside of bushing inside front gearcase with grease.
- 10 Lightly coat front washer surface of anvil (10) with grease.
- 29 Coat pinion of motor assembly (62) with grease.