



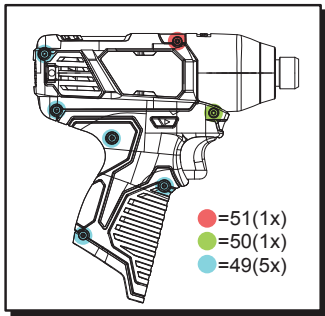
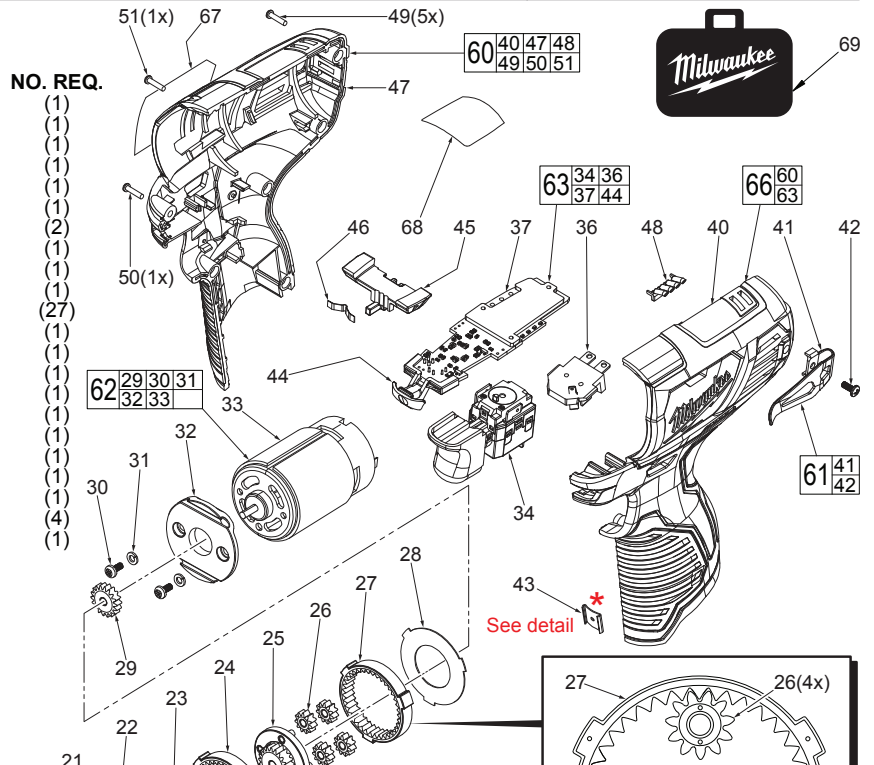
SERVICE PARTS LIST

BULLETIN NO.
54-26-2410

SPECIFY CATALOG NO. AND SERIAL NO. WHEN ORDERING PARTS		REVISED BULLETIN	DATE
M12™ 1/4" HEX IMPACT WRENCH			Feb. 2014
CATALOG NO.	2462-20	STARTING SERIAL NO.	F05A
		WIRING INSTRUCTION SEE PAGE 3	

EXAMPLE:
00 0 Component Parts (Small #) Are Included
When Ordering The Assembly (Large #).

FIG.	PART NO.	DESCRIPTION OF PART
1	-----	Retaining Ring
2	-----	Washer
3	-----	Spring
4	-----	Sleeve
5	14-30-0135	Gearcase Assembly with Bushing
8	45-88-2135	Nylon Ring
9	02-02-0170	3.5mm Steel Ball
10	-----	1/4" Hex Anvil
11	02-02-1300	5.0mm Steel Ball
12	-----	Hammer
13	-----	3.0mm Steel Ball
14	-----	Washer
15	-----	Compression Spring
16	-----	Retaining Ring
17	-----	Washer
18	-----	Washer
19	-----	Ball Bearing
20	-----	Gear Housing
21	-----	4.7mm Steel ball
22	-----	Cam Shaft
23	-----	2nd Stage Planet Gear
24	-----	2nd Stage Ring Gear



59	12	13	14	15	16	17	18	19	20
	21	22	23	24	25	26	27	28	

NOTE: Impact Assembly #59 comes completely assembled and lubricated.

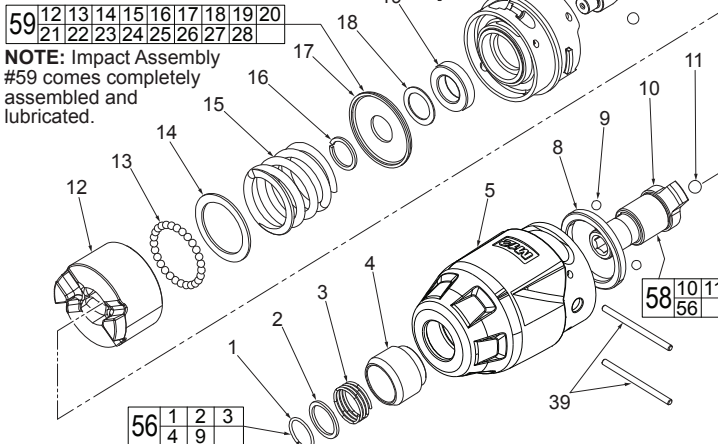
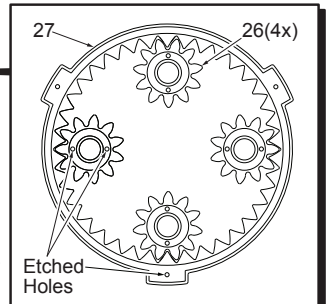


FIG.	PART NO.	DESCRIPTION OF PART	NO. REQ.
25	-----	2nd Stage Sun Gear and Carriage	(1)
26	-----	1st Stage Planet Gear	(4)
27	-----	1st Stage Ring Gear	(1)
28	-----	Washer	(1)
29	-----	Motor Pinion	(1)
30	-----	M3.0 Screw	(2)
31	-----	Lock Washer	(2)
32	-----	Motor Mounting Bracket	(1)
33	-----	Motor	(1)
34	-----	Switch	(1)
36	-----	Battery Contact Plate	(1)
37	-----	PCBA	(1)
38	06-65-0022	M2.5 x 30mm Pin	(2)
39	06-65-0502	M2.5 x 36.7mm Pin	(2)
40	-----	Left Handle Halve	(1)
41	-----	Belt Clip	(1)
42	-----	M3.0 Screw	(1)
43	42-70-0055	Housing Connection Clip	(1)

IMPORTANT:
If during Motor replacement the gearing from the Impact Assembly becomes dislodged, it is to be noted that the Ring Gears #24 and #27 and the Planet Gears #23 and #26 look the same but are different! The 1st stage gearing (26 and 27) are marked with etched holes as shown. The 2nd stage gearing will not have these markings.



***** Original Design 42-70-0055 Improved Design 42-70-0058
M12™ tools utilize two different Housing Connection Clip designs depending on the Handle Set. See page two for details.

FIG.	PART NO.	DESCRIPTION OF PART	NO. REQ.
44	-----	LED Lens	(1)
45	45-24-0077	Forward/Reverse Shuttle	(1)
46	40-50-1135	Spring Plate	(1)
47	-----	Right Handle Halve	(1)
48	31-01-0003	Light Pipe	(1)
49	06-82-1080	M3 x 14mm Pan Hd. Plast. T-10 Screw	(5)
50	06-82-6350	M3 x 16mm Pan Hd. Plast. T-10 Screw	(1)
51	06-82-7336	M3 x 20mm Pan Hd. Plast. T-10 Screw	(1)
56	45-22-0035	Sleeve and Ball Assembly	(1)
58	42-06-1015	Sleeve and 1/4" Hex Anvil Assembly	(1)
59	14-29-0032	Impact Assembly	(1)
60	31-50-0005	Handle Set	(1)
61	42-70-0490	Belt Clip Assembly	(1)
62	23-30-0430	Motor Assembly	(1)
63	23-66-0212	Electronics Assembly	(1)
66	31-50-0315	Handle/Electronics Assembly	(1)
67	12-20-2485	Service Nameplate	(1)
68	10-20-2952	Warning Label	(1)
69	42-55-2461	Carrying Case	(1)

FIG. LUBRICATION
(Type 'J' Grease, No. 49-08-4220):
5 Coat inside of bushing inside front gearcase with grease.
10 Lightly coat front washer surface of anvil (10) with grease.
29 Coat pinion of motor assembly (62) with grease.