



SERVICE PARTS LIST

BULLETIN NO.
54-24-2512

SPECIFY CATALOG NO. AND SERIAL NO. WHEN ORDERING PARTS		REVISED BULLETIN	DATE
M18™ 1/2" HAMMER-DRILL		54-24-2511	Sept. 2014
CATALOG NO.	2607-20	WIRING INSTRUCTION SEE PAGE 3	
STARTING SERIAL NO.	F25C		

EXAMPLE:

00	0
----	---

 Component Parts (Small #) Are Included
 When Ordering The Assembly (Large #).

★ = Part number change from
previous service parts list.

▲ = Optional,
Not Standard
Equipment

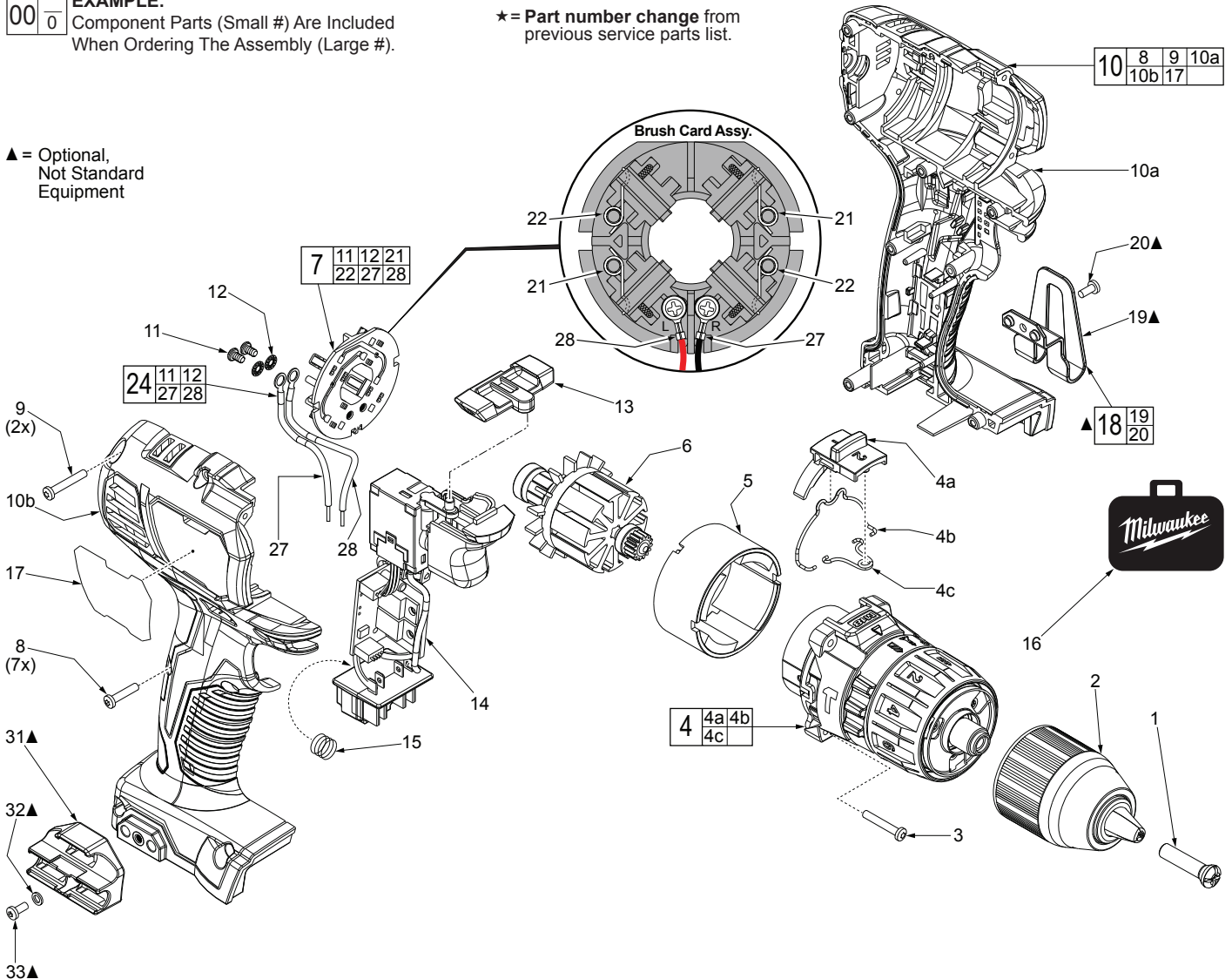


FIG.	PART NO.	DESCRIPTION OF PART	NO. REQ.	FIG.	PART NO.	DESCRIPTION OF PART	NO. REQ.
1	05-88-1500	M6 x 27mm LH Chuck Screw	1	18	42-70-2653	Belt Clip Assembly, <i>Optional</i>	1
2	42-66-2607	Keyless 1/2" Chuck	1	19	-----	Belt Clip, <i>Optional</i>	1
3	06-82-0135	M3 x 18mm Pan Hd. Plastite T-10 Screw	4	20	-----	Belt Clip Screw, <i>Optional</i>	1
4	14-29-2607	Gear Box Assembly	1	21	-----	Brush Spring - Right Hand	2
4a	45-24-2607	Speed Selector Slide	1	22	-----	Brush Spring - Left Hand	2
4b	44-10-2607	Speed Change Lever	1	24	14-46-2394	Leadwire/Screw/Washer Kit	1
4c	40-50-2607	Torsion Spring	1	27	-----	Leadwire Assembly - Black - Right Side	1
5	18-01-3020	Service Field	1	28	-----	Leadwire Assembly - Red - Left Side	1
6	16-07-2610	Service Armature	1	31	43-72-0550	Bit Holder, <i>Optional</i>	1
7	22-22-2602	Brush Card Assembly	1	32	45-88-1935	Washer, <i>Optional</i>	1
8	06-82-6350	M3 x 16mm Pan Hd. Plastite T-10 Screw	7	33	06-82-5275	6-32 x 5/16" Pan Hd. T-15 Screw, <i>Optional</i>	1
9	05-88-0675	M3 x 20mm Pan Hd. Plastite T-10 Screw	2				
10	31-44-2608	Handle Assembly	1				
10a	-----	Left Handle Halve	1				
10b	-----	Right Handle Halve	1				
11	05-88-0928	M3 x 5mm Pan Hd. T-10 Screw	2				
12	45-88-1980	Spring Washer	2				
13	42-42-2607	Forward/Reverse Shuttle	1				
★ 14	14-20-0108	Electronics Assembly (Consists of Switch, PCBA, LED and Battery Terminal Block)	1				
15	40-50-1090	Terminal Block Spring	1				
16	42-55-2606	Blow Molded Carrying Case	1				
17	12-20-2607	Service Nameplate	1				

MILWAUKEE ELECTRIC TOOL CORPORATION
 13135 W. Lisbon Road, Brookfield, WI 53005
 Drwg. 1