



SERVICE PARTS LIST

BULLETIN NO.
54-06-2640

SPECIFY CATALOG NO. AND SERIAL NO. WHEN ORDERING PARTS		REVISED BULLETIN	DATE
M18 CORDLESS CAULK and ADHESIVE GUN			Feb. 2013
CAT. NO. 2640-20 (Bare Tool)	SERIAL NUMBER	D15A	
		WIRING INSTRUCTION SEE PAGE 3	

CAT. NO. 2641-21CT:
Contains 2640-20 and the 10 oz. Quick Change Cartridge Kit shown below.

CAT. NO. 2642-21CT:
Contains 2640-20 and the 20 oz. Aluminum Sausage Cartridge Kit (48-08-1093)

CAT. NO. 2643-21CT:
Contains 2640-20 and the 20 oz. Clear Sausage Cartridge Kit (48-08-1094)

FIG.	PART NO.	DESCRIPTION OF PART	QTY.
1	44-94-0660	10 oz. Rod Assembly (Incl. rod & magnet)	(1)
2	45-88-2640	Wave Washer	(1)
3	31-50-2100	Handle Assembly with Speed Dial	(1)
4	23-66-2645	Switch Assembly with PCBA	(1)
7	45-04-2050	M5 x .75 Flat Hd. T-25 Security Screw	(1)
8	31-44-1030	Rod Handle	(1)
9	-----	Rod for 10 oz. Cartridge	(1)
10	44-70-0330	10 oz. Plunger	(1)
11	45-04-2015	M5 x .625 Flat Hd. Phillips Screw	(1)
12	31-01-1800	10 oz. Cartridge Holder	(1)
13	44-40-0900	Barrel Nut	(1)
14	45-88-1495	Flat Washer	(1)
15	42-52-0440	Cartridge Cap	(1)
16	31-86-0375	Spacer	(1)
17	45-04-1090	Hex Skt. Bolt	(3)
18	28-50-2070	Front Plate	(1)
19	42-32-0800	Barrel Bolt	(1)

SEE PAGE TWO FOR THE PARTS BREAKDOWN OF THE LARGER 20 OZ. AND QUART CARTRIDGE SYSTEMS

EXAMPLE:
Component Parts (Small #) Are Included When Ordering The Assembly (Large #).

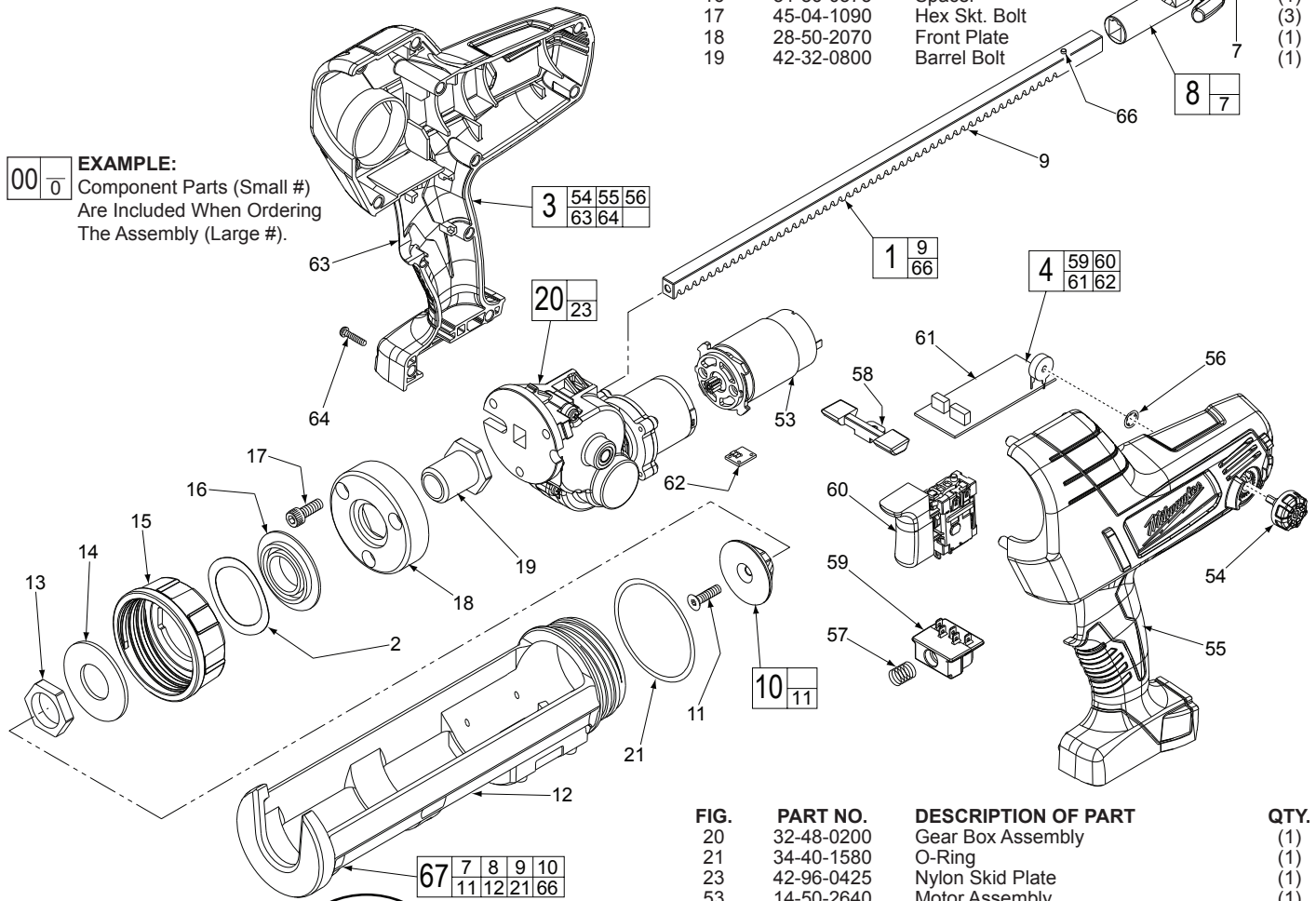


FIG.	PART NO.	DESCRIPTION OF PART	QTY.
20	32-48-0200	Gear Box Assembly	(1)
21	34-40-1580	O-Ring	(1)
23	42-96-0425	Nylon Skid Plate	(1)
53	14-50-2640	Motor Assembly	(1)
54	43-98-0780	Speed Dial	(1)
55	-----	Left Handle Halve	(1)
56	42-70-1125	Retainer/External Nut	(1)
57	40-50-1090	Terminal Block Spring	(1)
58	45-24-1250	Shuttle Lock	(1)
59	-----	Terminal Block	(1)
60	-----	Switch	(1)
61	-----	PCBA	(1)
62	-----	Hall Sensor (Electronic Switch)	(1)
63	-----	Right Handle Halve	(1)
64	06-82-2025	Pan Hd. Plastite T-10 Screw	(12)
66	-----	Rod Magnet	(1)
67	48-08-1076	10 oz. Quick Change Carriage Kit	(1)
	12-20-2640	Service Nameplate (Not Shown)	(1)

