



SERVICE PARTS LIST

BULLETIN NO.
54-22-1195

SPECIFY CATALOG NO. AND SERIAL NO. WHEN ORDERING PARTS		REVISED BULLETIN 54-22-1194	DATE June 2006
5" STRAIGHT GRINDER			
CATALOG NO.	5223	STARTING SERIAL NO.	584D
		WIRING INSTRUCTION 58-01-0313	



EXAMPLE:
Component Parts (Small #) Are Included
When Ordering The Assembly (Large #).

★ = Part number change from previous
service parts list.

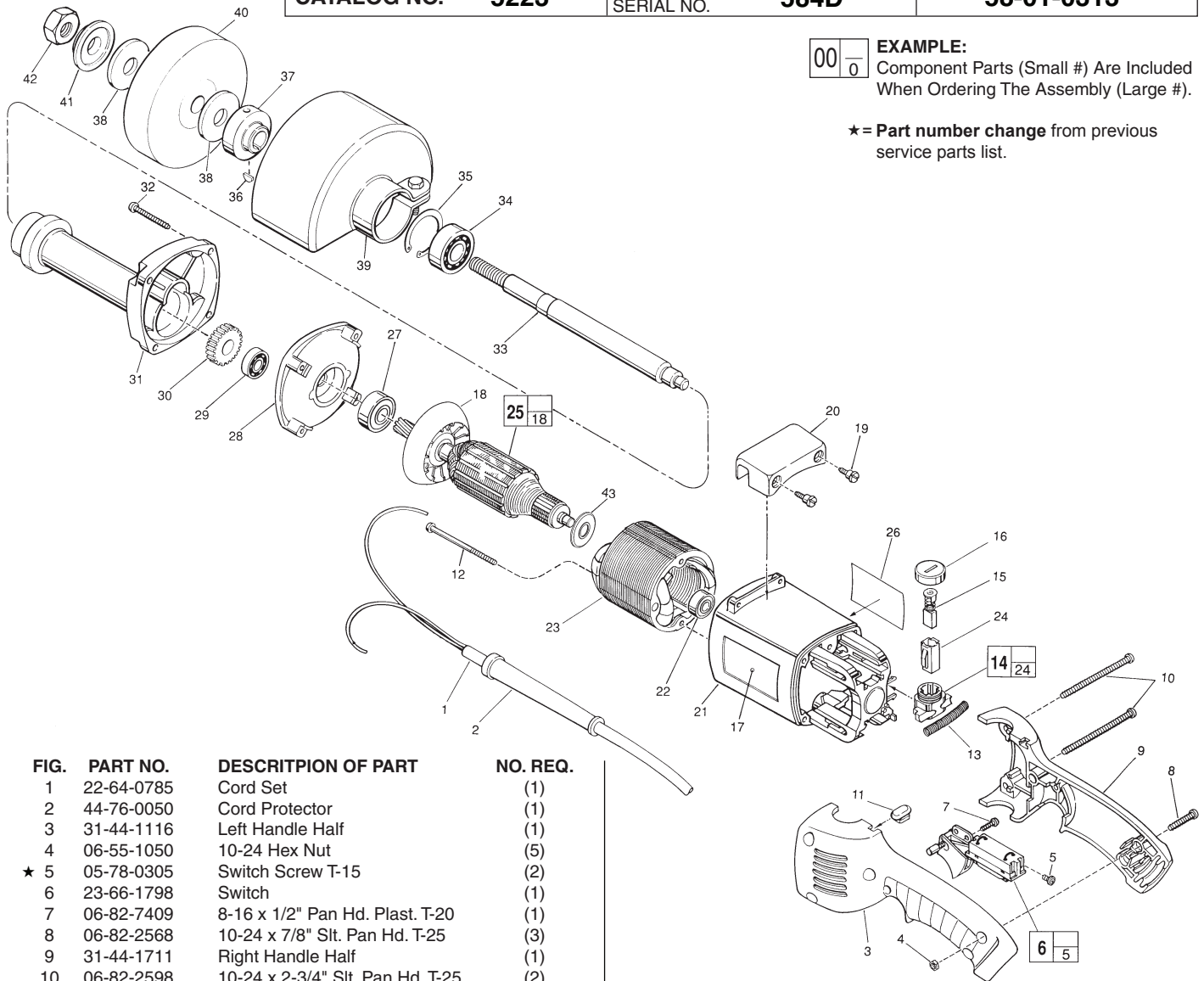


FIG.	PART NO.	DESCRIPTION OF PART	NO. REQ.
1	22-64-0785	Cord Set	(1)
2	44-76-0050	Cord Protector	(1)
3	31-44-1116	Left Handle Half	(1)
4	06-55-1050	10-24 Hex Nut	(5)
★ 5	05-78-0305	Switch Screw T-15	(2)
6	23-66-1798	Switch	(1)
7	06-82-7409	8-16 x 1/2" Pan Hd. Plast. T-20	(1)
8	06-82-2568	10-24 x 7/8" Slit. Pan Hd. T-25	(3)
9	31-44-1711	Right Handle Half	(1)
10	06-82-2598	10-24 x 2-3/4" Slit. Pan Hd. T-25	(2)
11	42-38-0190	Bumper	(1)
12	06-82-7375	8-16 x 2-1/2" Taptite T-20	(2)
13	40-50-7770	Brush Holder Spring	(2)
14	22-22-1325	Brush Holder Assembly	(2)
15	22-18-0680	Carbon Brush Assembly	(2)
16	23-44-0210	Brush Retaining Screw	(2)
17	12-20-5205	Service Nameplate Kit	(1)
18	22-84-0710	Fan	(1)
19	45-04-0720	Shoulder Screw	(2)
20	31-70-0125	Tool Rest	(1)
21	31-50-0548	Motor Housing	(1)
22	02-04-0845	Ball Bearing	(1)
23	18-50-0135	Field	(1)
24	22-20-0660	Brush Tube	(2)
★ 25	16-50-1135	Armature	(1)
26	10-98-1820	Warning Label	(1)
27	02-04-1515	Ball Bearing	(1)
28	28-28-1567	Diaphragm	(1)
29	02-04-0910	Ball Bearing	(1)
30	32-75-3140	Spindle Gear	(1)
31	28-50-6196	Spindle Housing	(1)
32	06-82-7407	10-14 x 1-9/16" Pan Hd. T-25	(4)
33	38-50-5340	Spindle Shaft	(1)
34	02-04-1745	Ball Bearing	(1)

FIG.	PART NO.	DESCRIPTION OF PART	NO. REQ.
35	34-80-2960	Internal Retaining Ring	(1)
36	06-42-1200	Woodruff Key	(1)
37	43-34-0191	Inner Wheel Flange	(1)
38	45-88-0165	Rubber Washer	(2)
39	49-12-0290	Wheel Guard	(1)
40	-----	5" Grinding Wheel (Select from Cat.)	(1)
41	43-34-0192	Outer Wheel Flange	(1)
42	06-55-3250	5/8 - 11 Hex Nut	(1)
★ 43	23-16-1700	Commutator Insulator	(1)
	49-96-4072	1-1/16" Open End Wrench	(1)
	49-96-6600	Spanner Wrench	(1)

FIG. ★ 31 LUBRICATION
Important! Completely clean out old grease from the spindle housing and replace with 3/4 Oz. Type "Y" Grease, No. 49-08-5270.

MILWAUKEE ELECTRIC TOOL CORPORATION
13135 W. LISBON RD., BROOKFIELD, WI 53005
Drwg. 5