



# SERVICE PARTS LIST

**BULLETIN NO.**  
**54-24-5385**

SPECIFY CATALOG NO. AND SERIAL NO. WHEN ORDERING PARTS		REVISED BULLETIN	DATE
<b>3/4" (19mm) SDS ROTARY HAMMER</b>			Mar. 2010
<b>CATALOG NO.</b>	<b>5385-20</b>	<b>WIRING INSTRUCTION</b>	
<b>SERIAL NUMBER</b>	<b>C35A</b>	<b>See page 4</b>	

00/0

**EXAMPLE:**

Component Parts (Small #) Are Included When Ordering The Assembly (Large #).

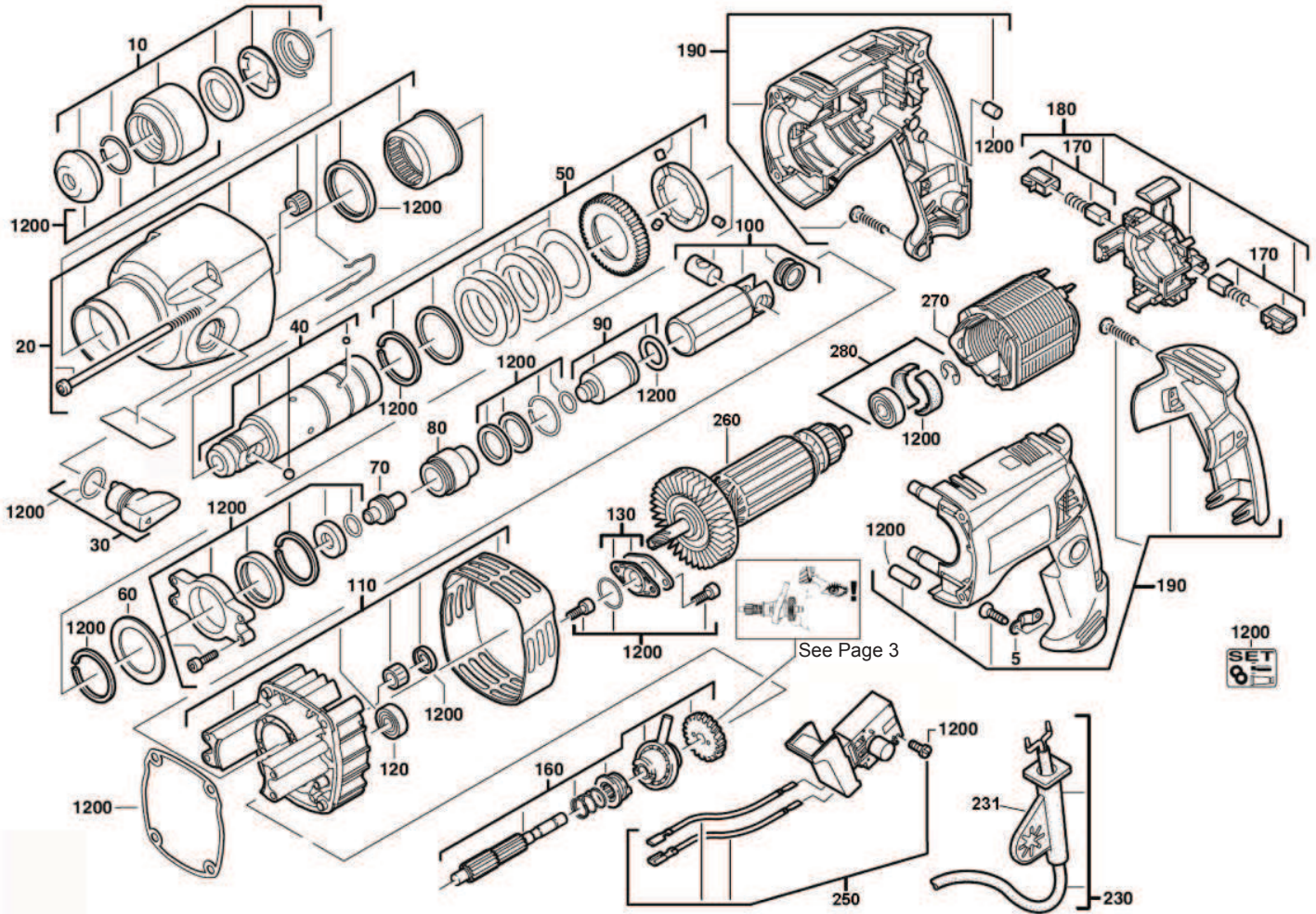


FIG.	PART NO.	DESCRIPTION OF PART	NO. REQ.
5	42-68-0601	Cord Clamp	(1)
10	44-20-5385	Bit Lock Assembly	(1)
20	14-30-5385	Gearcase Assembly	(1)
30	43-98-5385	Shift Knob Assembly	(1)
40	32-40-5385	Gear Assembly	(1)
50	42-70-5385	Gear and Clutch Assembly	(1)
60	45-88-5386	Steel Washer	(1)
70	45-56-5385	Hammer Striker	(1)
80	31-58-5385	Striker Sleeve	(1)
90	44-82-5385	Ram Assembly	(1)
100	14-12-5385	Cylinder Assembly	(1)
110	42-24-5385	Bearing Bracket Assembly	(1)
120	02-04-5385	Ball Bearing	(1)
130	42-24-5386	Bearing Cover Assembly	(1)
160	45-08-5385	Countershaft Assembly	(1)
170	-----	Carbon Brush and Tube (Set of 2)	(1)
180	44-90-5386	110V Brush Card	(1)
190	31-44-5385	Handle Housing Assembly	(1)
230	22-64-0216	120V Power Cord	(1)
231	44-76-5385	Strain Relief	(1)
250	23-66-5386	110V Switch	(1)
260	16-10-5385	Service Armature	(1)
270	18-10-5385	Service Field	(1)
280	14-46-5386	Bearing Kit	(1)
1200	14-46-5385	Maintenance Set	(1)

**SEE PAGES 2 & 3 OF THIS BULLETIN FOR ADDITIONAL SERVICE NOTES**

**MILWAUKEE ELECTRIC TOOL CORPORATION**  
13135 W. LISBON RD., BROOKFIELD, WI 53005  
Drwg. 2