



SERVICE PARTS LIST

BULLETIN NO.
54-32-1302

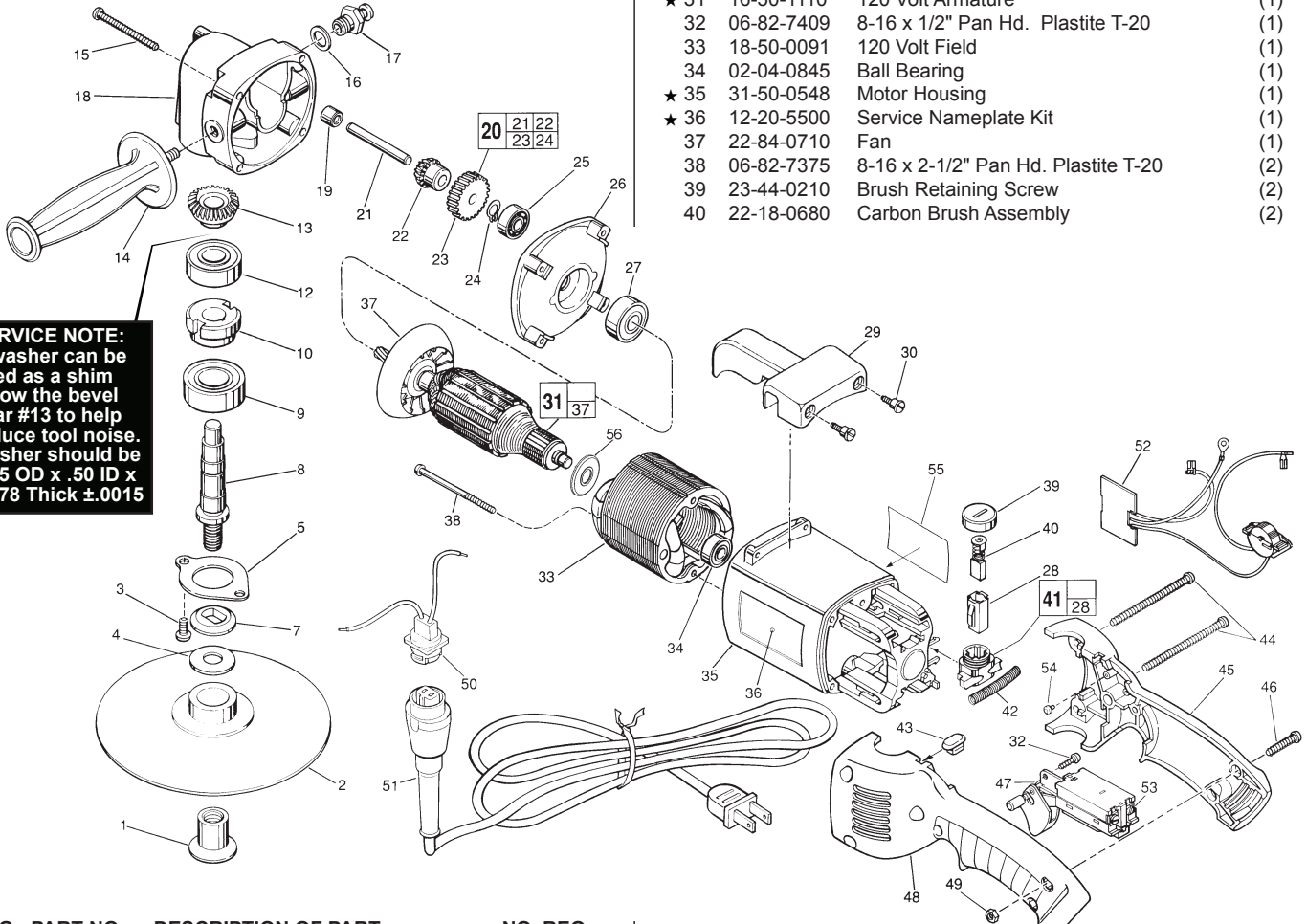
SPECIFY CATALOG NO. AND SERIAL NO. WHEN ORDERING PARTS		REVISED BULLETIN	DATE
7" HEAVY-DUTY VARIABLE SPEED POLISHER		54-32-1301	June 2013
CATALOG NO.	5540	WIRING INSTRUCTION	
STARTING SERIAL NO.	802C	58-01-0225	

EXAMPLE:

00	0
----	---

 Component Parts (Small #) Are Included When Ordering The Assembly (Large #).

FIG.	PART NO.	DESCRIPTION OF PART	NO. REQ.
29	31-70-0110	Tool Rest	(1)
30	45-04-0720	Shoulder Screw	(3)
★ 31	16-50-1110	120 Volt Armature	(1)
32	06-82-7409	8-16 x 1/2" Pan Hd. Plastite T-20	(1)
33	18-50-0091	120 Volt Field	(1)
34	02-04-0845	Ball Bearing	(1)
★ 35	31-50-0548	Motor Housing	(1)
★ 36	12-20-5500	Service Nameplate Kit	(1)
37	22-84-0710	Fan	(1)
38	06-82-7375	8-16 x 2-1/2" Pan Hd. Plastite T-20	(2)
39	23-44-0210	Brush Retaining Screw	(2)
40	22-18-0680	Carbon Brush Assembly	(2)



SERVICE NOTE:
 A washer can be used as a shim below the bevel gear #13 to help reduce tool noise. Washer should be .875 OD x .50 ID x .0078 Thick ±.0015

FIG.	PART NO.	DESCRIPTION OF PART	NO. REQ.
1	49-40-0390	Disc Nut	(1)
2	49-36-2500	7" Backing Pad	(1)
★ 3	06-82-5338	1/4-20 x 1/2" Pan Hd. Slit. Tapt. T-30	(2)
4	45-88-8465	Spindle Washer	(1)
5	45-88-7785	Spindle Retaining Washer	(1)
7	49-05-0060	Washer Flange	(1)
8	38-50-5231	Spindle Shaft	(1)
9	02-04-2031	Ball Bearing	(1)
10	42-74-0070	Spindle Locking Cog	(1)
12	02-04-1747	Ball Bearing	(1)
13	32-05-1081	Bevel Gear	(1)
★ 14	43-62-1265	Side Handle	(1)
15	06-82-7441	10-14 x 1-7/8" Pan Hd. Slit. Plastite T-25	(4)
16	45-88-5320	Flat Washer	(1)
17	44-20-0211	Spindle Lock Assembly	(1)
18	28-14-1430	Gear Case	(1)
19	02-50-2200	Needle Bearing	(1)
20	14-73-0140	Intermediate Gear Assy.	(1)
21	-----	Intermediate Shaft	(1)
22	-----	Bevel Gear	(1)
23	-----	Intermediate Gear	(1)
24	-----	External Retaining Ring	(1)
25	02-04-0910	Ball Bearing	(1)
26	28-28-1565	Diaphragm	(1)
★ 27	02-04-1860	Ball Bearing	(1)
28	22-20-0660	Brush Tube	(2)

FIG.	PART NO.	DESCRIPTION OF PART	NO. REQ.
41	22-22-1325	Brush Holder Assembly	(2)
42	40-50-7770	Brush Holder Spring	(2)
43	42-38-0190	Bumper	(1)
44	06-82-2598	10-24 x 2-3/4" Pan Hd. Slit. T-25	(2)
45	31-44-1776	Right Handle Half	(1)
46	06-82-2568	10-24 x 7/8" Pan Hd. Slit. T-25	(3)
47	23-66-1940	TSC Switch	(1)
48	31-44-1771	Left Handle Half	(1)
49	06-55-1050	10-24 Hex Nut	(5)
50	22-56-0675	Blade Housing Assembly	(1)
51	48-76-5010	Cord Set	(1)
★ 52	14-20-1035	Dial / Module Assembly	(1)
★ 53	05-78-0305	Switch Screw	(4)
54	42-38-0181	Rubber Bumper	(2)
★ 55	10-98-1810	Warning Label	(1)
★ 56	23-16-1700	Commutator Insulator	(1)

FIG. LUBRICATION
 ★ 18 1-1/4 Oz. Type "Y" Grease No. 49-08-5270, In Grease Cavity.
 ★ 1-1/2 Oz. Type "B" Grease, No. 49-08-0900, To Build Up Wall of Grease Around Grease Cavity.

MILWAUKEE ELECTRIC TOOL CORPORATION
 13135 W. LISBON RD., BROOKFIELD, WI 53005
 Drwg. 6