



SERVICE PARTS LIST

BULLETIN NO.
54-37-0126

SPECIFY CATALOG NO. AND SERIAL NO. WHEN ORDERING PARTS		REVISED BULLETIN	DATE
1-3/4 H.P. BODY GRIP ROUTER		54-37-0125	Apr. 2010
CATALOG NO. 5615-20/5615-29	SERIAL NUMBER 279B	WIRING INSTRUCTION 58-01-0705	

EXAMPLE:
00 0 Component Parts (Small #)
Are Included When Ordering
The Assembly (Large #).
★ = Part number change from
previous service parts list.

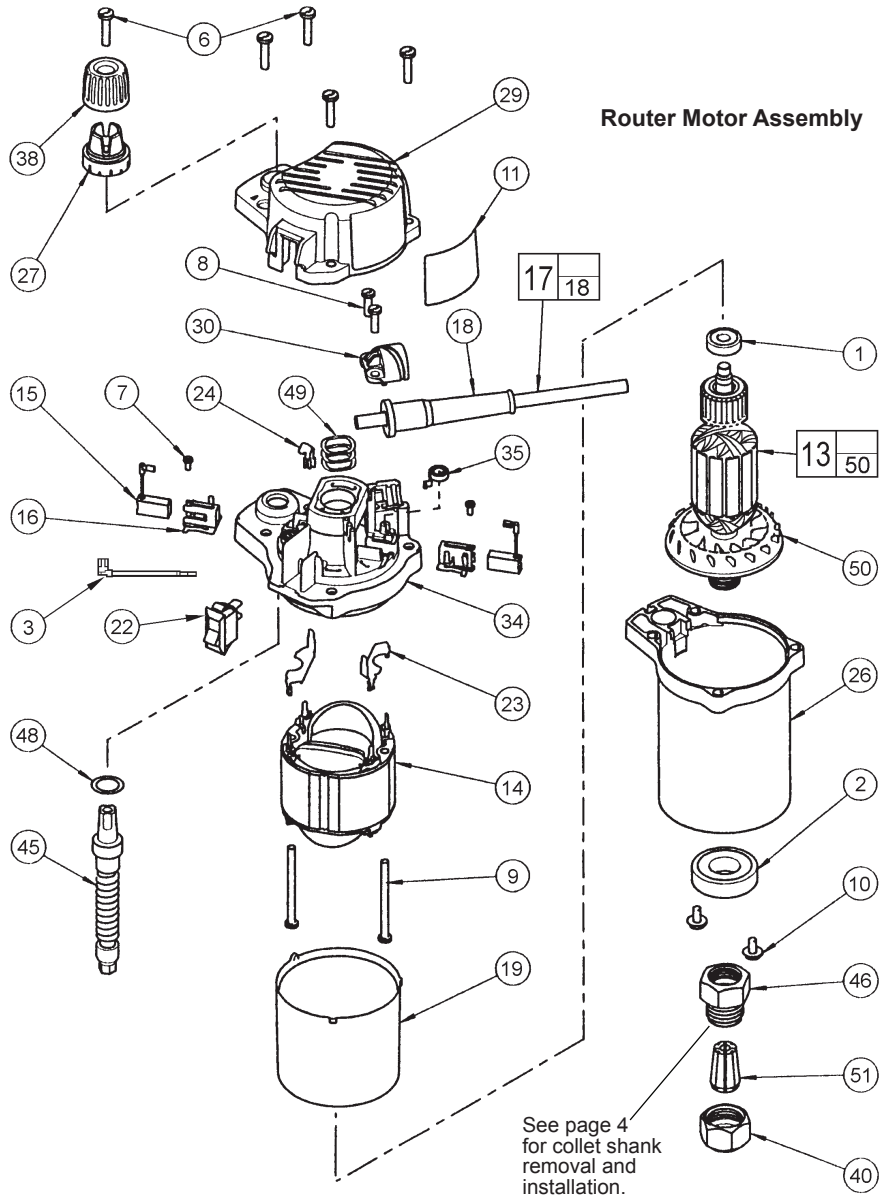


FIG.	PART NO.	DESCRIPTION OF PART	QTY.
1	02-04-0852	Ball Bearing	(1)
★ 2	02-04-2006	Ball Bearing	(1)
★ 3	23-94-0040	Leadwire Assembly	(1)
6	06-82-5574	10-24 x 7/8" Pan Hd. Slit. Tapt. T-25	(5)
7	06-82-7212	4-20 x 1/4" Pan Hd. Slit. Plast. T-10	(2)
8	06-82-7270	8-16 x 5/8" Pan Hd. Slit. Plast. T-20	(2)
9	06-82-7455	8-16 x 2-3/8" Pan Hd. Slit. Plast. T-20	(2)
11	12-20-0145	Service Nameplate Kit	(1)
★ 13	16-30-0011	Armature	(1)
14	18-30-1010	Field	(1)
15	22-16-0410	Carbon Brush	(2)
16	22-22-0165	Brush Tube	(2)
17	22-64-7777	Cord Set Assembly	(1)
18	44-76-0210	Cord Protector	(1)
19	23-16-0405	Field Insulator	(1)
★ 22	23-66-2280	Rocker Switch	(1)
23	23-74-0025	Field Terminal	(2)
24	23-74-0055	Connector Terminal	(1)
26	28-50-0105	Motor Housing	(1)
27	31-01-0025	Depth Scale	(1)
29	31-15-0065	Motor Cover	(1)
30	31-17-0070	Cord Clamp	(1)
★ 34	31-50-0106	Motor Frame	(1)

FIG.	PART NO.	DESCRIPTION OF PART	QTY.
35	40-50-0190	Brush Spring	(2)
★ 38	43-98-0531	Depth Knob	(1)
40	44-40-0095	Collet Nut (2 supplied with tool)	(1)
45	45-08-0030	Depth Shaft Assembly	(1)
★ 46	45-10-0081	Collet Shank (See reverse side for servicing)	(1)
48	45-88-0045	Washer	(1)
49	45-88-0577	Wave Spring Washer	(3)
50	22-84-0380	Fan Assembly	(1)
51	48-66-0985	1/4" Collet	(1)
51	48-66-1010	1/2" Collet	(1)
	49-96-0365	1-1/8" Open End Wrench (Not Shown)	(2)

FIG. 16.34 NOTES:
When servicing the motor frame (34) and the brush tube (16) has to be removed, replace with a new brush tube.

MILWAUKEE ELECTRIC TOOL CORPORATION
13135 W. LISBON RD., BROOKFIELD, WI 53005
Drwg. 6