



SERVICE PARTS LIST

BULLETIN NO.
54-37-0225

SPECIFY CATALOG NO. AND SERIAL NO. WHEN ORDERING PARTS		REVISED BULLETIN	DATE
2.25 MAX. H.P. BODY GRIP ROUTER w/ ELECTRONICS			Apr. 2013
CATALOG NO. 5616-20/5616-29	SERIAL NUMBER A19A	WIRING INSTRUCTION 58-01-0717	

EXAMPLE:
Component Parts (Small #) Are Included
When Ordering The Assembly (Large #).

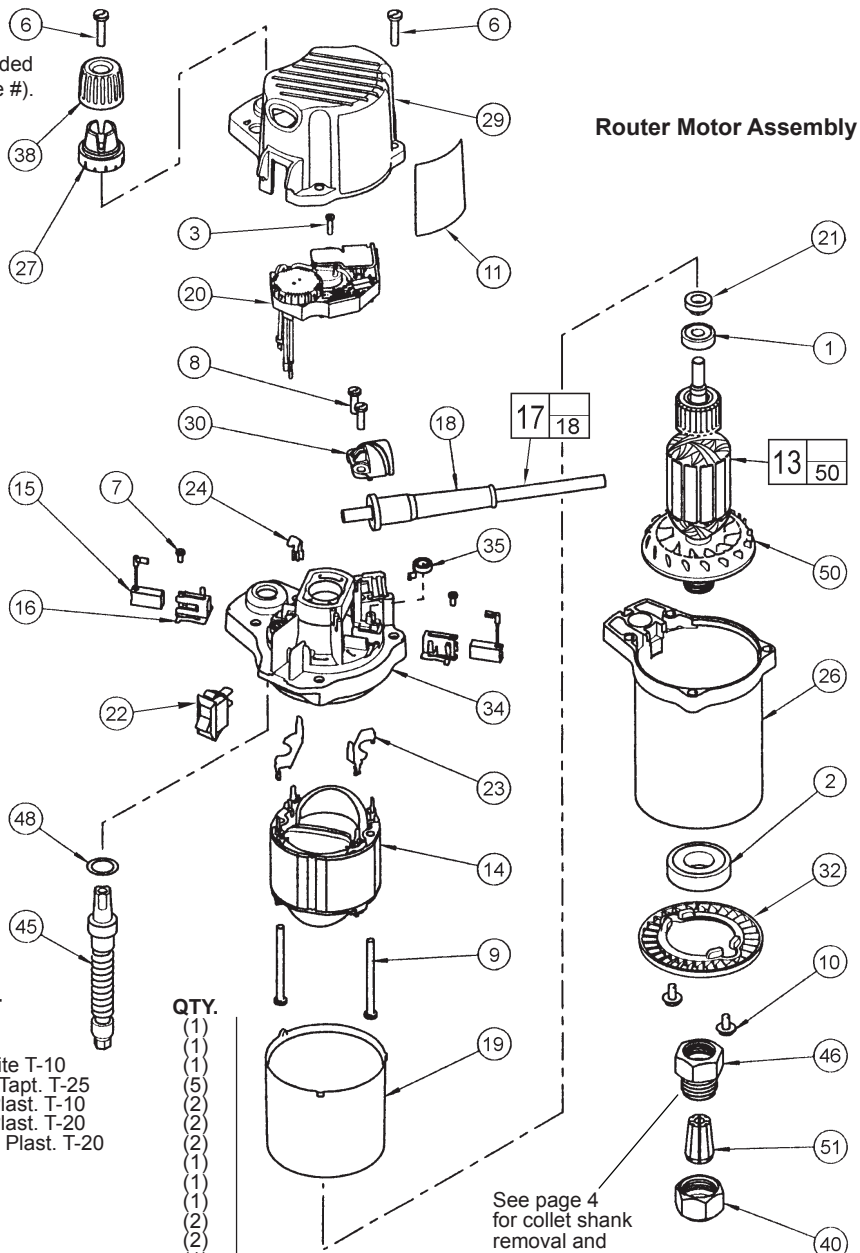


FIG. PART NO.	DESCRIPTION OF PART	QTY.
1	02-04-0852 Ball Bearing	(1)
2	02-04-2006 Ball Bearing	(1)
3	06-82-7225 4-20 x 1/2" Pan Hd. Plastite T-10	(1)
6	06-82-5574 10-24 x 7/8" Pan Hd. Slit. Tapt. T-25	(5)
7	06-82-7212 4-20 x 1/4" Pan Hd. Slit. Plast. T-10	(2)
8	06-82-7270 8-16 x 5/8" Pan Hd. Slit. Plast. T-20	(2)
9	06-82-7455 8-16 x 2-3/8" Pan Hd. Slit. Plast. T-20	(2)
11	12-20-0255 Service Nameplate Kit	(1)
13	16-30-0015 Armature	(1)
14	18-30-1015 Field	(2)
15	22-16-0410 Carbon Brush	(2)
16	22-22-0165 Brush Tube	(2)
17	22-64-0320 Cord Set Assembly	(1)
18	44-76-0210 Cord Protector	(1)
19	23-16-0405 Field Insulator	(1)
20	14-20-0055 Electronic Feedback Module	(1)
21	23-38-0200 Tachometer	(1)
22	23-66-2280 Rocker Switch	(1)
23	23-74-0025 Field Terminal	(2)
24	23-74-0055 Connector Terminal	(1)
26	28-50-0105 Motor Housing	(1)
27	31-01-0025 Depth Scale	(1)
29	31-15-0095 Motor Cover	(1)
30	31-17-0070 Cord Clamp	(1)
32	31-55-0025 Contamination Shield	(1)
34	31-50-0106 Motor Frame	(1)
35	40-50-0190 Brush Spring	(2)
38	43-98-0531 Depth Knob	(1)
40	44-40-0095 Collet Nut (2 supplied with tool)	(1)
45	45-08-0030 Depth Shaft Assembly	(1)
46	45-10-0081 Collet Shank (See reverse)	(1)
48	45-88-0045 Washer	(1)
50	22-84-0380 Fan Assembly	(1)
51	48-66-0985 1/4" Collet	(1)
51	48-66-1010 1/2" Collet	(1)
	49-96-0365 1-1/8" Open End Wrench (Not Shown)	(2)
	49-96-0370 T-Handle Depth Adjustment Wrench (Not Shown)	(1)

FIG. 16,34,35 NOTES:
When servicing the motor frame (34) and the brush tube (16) has to be removed, replace with a new brush tube. Note: Make sure that the brush spring (35) is positioned properly onto the new motor frame to insure proper brush tension to the commutator.

21 Press tachometer (21) flush ± 0.020 to the end of the armature shaft (13). Conical side to the bearing (1).

40,51 Collet must be snapped into the collet nut prior to assembly onto the collet shank.

MILWAUKEE ELECTRIC TOOL CORPORATION
13135 W. LISBON RD., BROOKFIELD, WI 53005