



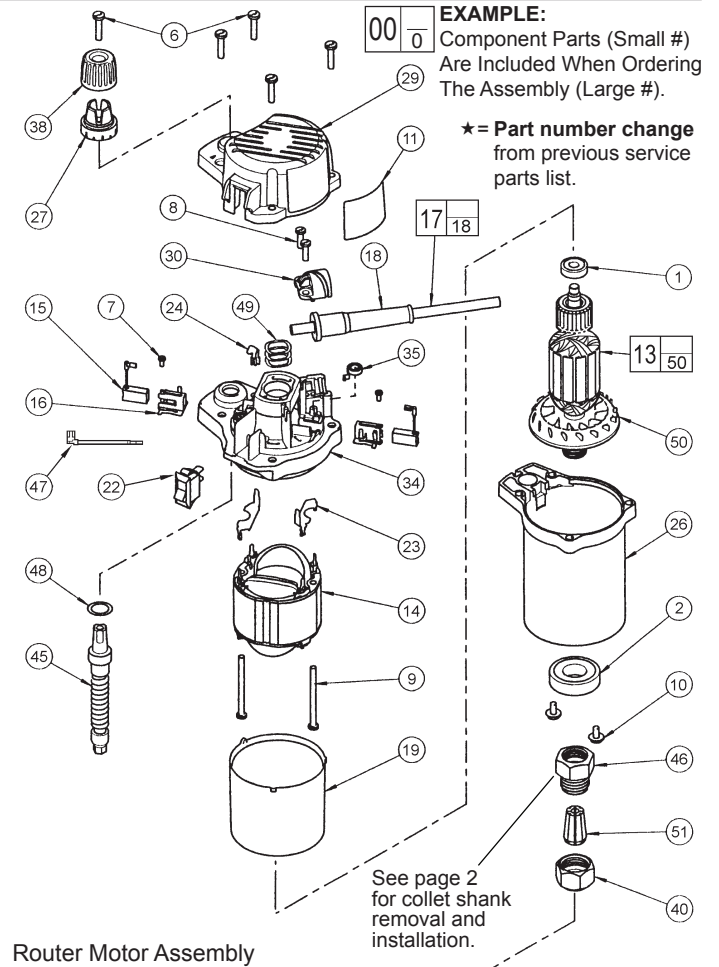
# SERVICE PARTS LIST

**BULLETIN NO.**  
**54-37-0151**

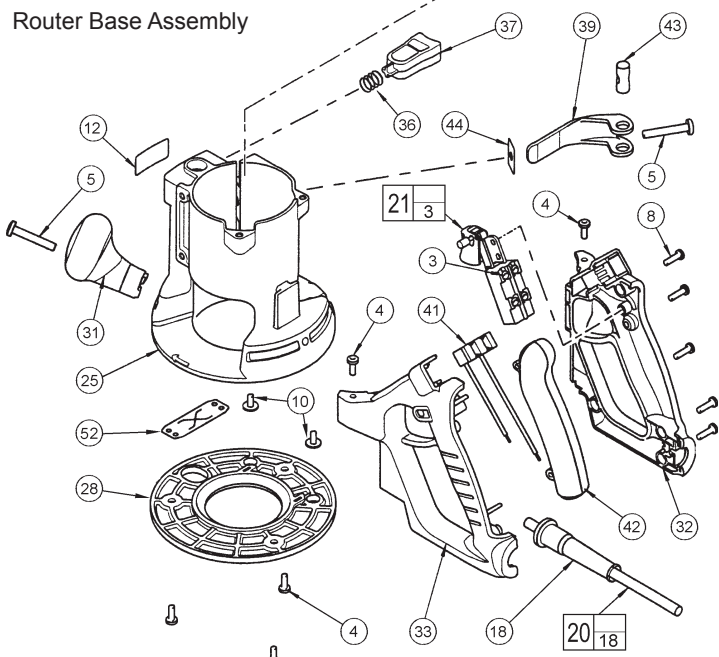
SPECIFY CATALOG NO. AND SERIAL NO. WHEN ORDERING PARTS		REVISED BULLETIN 54-37-0150	DATE Apr. 2010
<b>1-3/4 H.P. D-HANDLE ROUTER</b>			
CATALOG NO. <b>5619-20/5619-29</b>	SERIAL NUMBER <b>280B</b>	WIRING INSTRUCTION <b>58-01-0715</b>	

FIG.	PART NO.	DESCRIPTION OF PART	QTY.
	1	Ball Bearing	(1)
★	2	Ball Bearing	(1)
	3	M5.5 x .6 x 7mm Pan Hd. Slit. T-15	(4)
	4	10-24 x 1/2" Slit. Pan Hd. Tapt. T-25	(5)
	5	1/4-20 x 1-1/2" Pan Hd. Slit. Tapt. T-30	(2)
	6	10-24 x 7/8" Pan Hd. Slit. Tapt. T-25	(5)
	7	4-20 x 1/4" Pan Hd. Slit. Plast. T-10	(2)
	8	8-16 x 5/8" Pan Hd. Slit. Plast. T-20	(7)
	9	8-16 x 2-3/8" Pan Hd. Slit. Plast. T-20	(2)
	10	10-32 x 7/16" Pan Hd. Tapt. Sems T-25	(4)
	11	Service Nameplate Kit	(1)
	12	Nameplate	(1)
★	13	Armature	(1)
	14	Field	(1)
	15	Carbon Brush	(2)
	16	Brush Tube	(2)
	17	Cord Set Assembly	(1)
	18	Cord Protector	(2)
	19	Field Insulator	(1)
	20	Cord Set Assembly	(1)
	21	Switch Assembly	(1)
★	22	Rocker Switch	(1)
	23	Field Terminal	(2)
	24	Connector Terminal	(1)
	25	Base	(1)
	26	Motor Housing	(1)
	27	Depth Scale	(1)
	28	Sub Base	(1)
	29	Motor Cover	(1)
	30	Cord Clamp	(1)
	31	Knob Handle	(1)
	32	Right Handle Halve	(1)
	33	Left Handle Halve	(1)
★	34	Motor Frame	(1)
	35	Brush Spring	(2)
	36	Compression Spring	(1)
★	37	Release Button	(1)
★	38	Depth Knob	(1)
	39	Base Clamp Lever	(1)
	40	Collet Nut (2 supplied with tool)	(1)
	41	Receptacle Outlet	(1)
★	42	Grip	(1)
	43	Thru Pin	(1)
	44	Wear Plate	(1)
	45	Depth Shaft Assembly	(1)
★	46	Collet Shank (See reverse side for servicing)	(1)
★	47	Leadwire Assembly	(1)
	48	Washer	(1)
	49	Wave Spring Washer	(3)
	50	Fan Assembly	(1)
	51	1/4" Collet	(1)
	51	1/2" Collet	(1)
★	52	Dust Shield	(1)
	49-96-0365	1-1/8" Open End Wrench (Not Shown)	(2)

- FIG. 5,39 NOTES:**
- Clamping force for the base clamp lever (39) is adjusted with base clamp screw (5). Tighten the screw using 10-20 lbs. force to close the lever to the locked position. Motor unit must be in base when checking force.
- 16,34 When servicing the motor frame (34) and the brush tube (16) has to be removed, replace with a new brush tube.
- 25,36,37 To service the release button (37) and the compression spring (36) a long, thin tool like a flat blade screwdriver must be used. From the bottom of the base (25), insert the screwdriver into the cavity located under the release button. Press on the button detent to release.
- 39,43 Apply a thin coat of "L" grease, No. 49-08-4170, to the pivot surface areas of the base clamp lever (39). Apply a thin coat of grease to the surface of the thru pin (43).



Router Motor Assembly



Router Base Assembly

**MILWAUKEE ELECTRIC TOOL CORPORATION**  
13135 W. LISBON RD., BROOKFIELD, WI 53005