

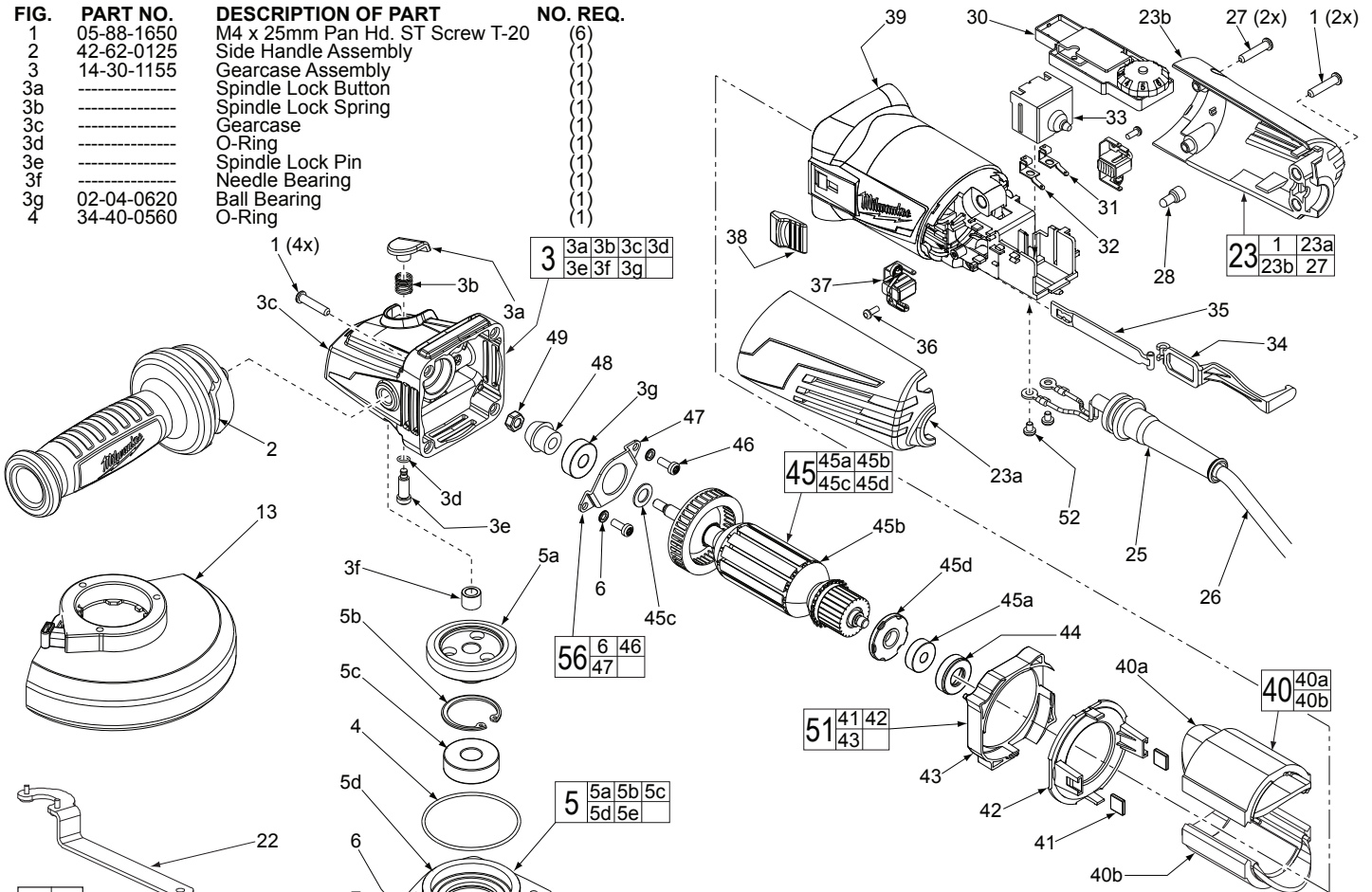


SERVICE PARTS LIST

BULLETIN NO.
54-38-2140

| | | | |
|---|-----------------|--|-------------|
| SPECIFY CATALOG NO. AND SERIAL NO. WHEN ORDERING PARTS | | REVISED BULLETIN | DATE |
| 5" HP ANGLE GRINDER with SLIDE SWITCH & Speed Dial | | | Mar. 2012 |
| CAT. NO. | 6117-33D | STARTING SERIAL NUMBER | C95A |
| | | WIRING INSTRUCTION See Reverse Side | |

| FIG. | PART NO. | DESCRIPTION OF PART | NO. REQ. |
|------|------------|---------------------------------|----------|
| 1 | 05-88-1650 | M4 x 25mm Pan Hd. ST Screw T-20 | (6) |
| 2 | 42-62-0125 | Side Handle Assembly | (1) |
| 3 | 14-30-1155 | Gearcase Assembly | (1) |
| 3a | ----- | Spindle Lock Button | (1) |
| 3b | ----- | Spindle Lock Spring | (1) |
| 3c | ----- | Gearcase | (1) |
| 3d | ----- | O-Ring | (1) |
| 3e | ----- | Spindle Lock Pin | (1) |
| 3f | ----- | Needle Bearing | (1) |
| 3g | 02-04-0620 | Ball Bearing | (1) |
| 4 | 34-40-0560 | O-Ring | (1) |



00 0

EXAMPLE:
Component Parts (Small #)
Are Included When Ordering
The Assembly (Large #).

***LUBRICATION NOTE:**
When servicing the Gears (5a & 48) or the Gearcase (3c), 90-95% of the old grease must be removed prior to new grease being added.

FIG. LUBRICATION*
5a,48 Type "Y" Grease, No. 49-08-5270, Must Be Applied To All Gear Teeth.

| | | | |
|-----|------------|------------------------------------|-----|
| 5 | 14-73-0425 | Spindle Hub Assembly | (1) |
| 5a | ----- | Spiral Bevel Gear | (1) |
| 5b | ----- | Retaining Ring | (1) |
| 5c | ----- | Ball Bearing | (1) |
| 5d | ----- | Spindle Hub | (1) |
| 5e | ----- | 5/8" Spindle | (1) |
| 6 | 05-90-0225 | Spring Washer | (6) |
| 7 | 05-88-1210 | M4 x 14mm Pan Hd. Mach. Screw T-20 | (4) |
| 13 | 14-32-0215 | 5" Type 27 Guard Assembly (Shown) | (1) |
| 13 | 43-54-0925 | 5" Type 1 Guard Assy. (Not Shown) | (1) |
| 15 | ----- | O-Ring | (1) |
| 16 | ----- | Wavey Spring | (1) |
| 17 | ----- | Flange with Ramps | (1) |
| 18 | ----- | Retaining Ring | (1) |
| 19 | 43-34-0935 | Inner Disc Flange | (1) |
| 21 | 44-40-0035 | Outer Flange Nut | (1) |
| 22 | 49-96-7205 | Spanner Wrench | (1) |
| 23 | 14-34-6125 | Rear Handle Set | (1) |
| 23a | ----- | Left Handle Halve | (1) |
| 23b | ----- | Right Handle Halve | (1) |
| 25 | 44-76-0095 | Cord Protector | (1) |

| FIG. | PART NO. | DESCRIPTION OF PART | NO. REQ. |
|------|------------|--------------------------------------|----------|
| 26 | 22-64-3430 | Power Cord | (1) |
| 27 | 05-88-1300 | M4 x 28mm Pan Hd. ST Screw T-20 | (2) |
| 28 | 22-56-0150 | Close End Connector | (1) |
| 30 | 22-09-1840 | PCB Assembly | (1) |
| 31 | 23-74-1620 | Terminal | (1) |
| 32 | 23-74-1615 | Terminal | (1) |
| 33 | 23-66-2665 | On-Off Switch | (1) |
| 34 | 31-84-0090 | Slide Pole - Back | (1) |
| 35 | 31-84-0095 | Slide Pole - Front | (1) |
| 36 | 05-88-0030 | M3 x 8.5mm Pan Hd. ST Screw T-10 | (2) |
| 37 | 22-18-2250 | Carbon Brush Assembly (Set of 2) | (1) |
| 38 | 31-89-0245 | Slide Switch Button | (1) |
| 39 | 31-50-2130 | Motor Housing | (1) |
| 40 | 18-07-0295 | Field Assembly | (1) |
| 40a | ----- | Field Halve | (1) |
| 40b | ----- | Field Halve | (1) |
| 41 | 42-28-0085 | Rubber Block | (2) |
| 42 | ----- | Baffle Foot | (1) |
| 43 | ----- | Baffle | (1) |
| 44 | 42-96-0016 | Rubber Bearing Cap | (1) |
| 45 | 16-10-0845 | Armature Assembly | (1) |
| 45a | 02-04-2110 | Ball Bearing | (1) |
| 45b | ----- | Armature | (1) |
| 45c | 45-88-0406 | Washer | (1) |
| 45d | ----- | Magnetic Disc | (1) |
| 46 | 05-88-1280 | M4 x 10mm Pan Hd. Mach. Screw T-20 | (2) |
| 47 | 44-86-0155 | Bearing Retainer | (1) |
| 48 | 32-60-0310 | Pinion | (1) |
| 49 | 05-55-0620 | M5 Hex Nut | (1) |
| 50 | 14-46-6105 | Flange with Ramps Assembly | (1) |
| 51 | 42-14-0515 | Baffle Assembly | (1) |
| 52 | 05-78-0305 | M3.5 x 7mm Pan Hd. Phil. Switch Scr. | (2) |
| 56 | 44-86-0145 | Bearing Retaining Plate Assembly | (1) |
| | 12-20-1560 | Service Nameplate (Not Shown) | (1) |
| | 10-20-2225 | Bi-Lingual Warning Label (Not Shown) | (1) |