



SERVICE PARTS LIST

BULLETIN NO.
54-38-6133

SPECIFY CATALOG NO. AND SERIAL NO. WHEN ORDERING PARTS		REVISED BULLETIN	DATE
4.5" (115mm) ANGLE GRINDER		54-38-6132	Apr. 2015
CATALOG NO. 6130-33	STARTING SERIAL NO. C27D	WIRING INSTRUCTION SEE PAGE 3	

FIG.	PART NO.	DESCRIPTION OF PART	NO. REQ.
★ 1	14-30-0155	Gearcase Assembly	(1)
★ 2	05-88-1200	M4 x 16 Pan Hd. Plastite T-20 Screw	(7)
★ 3	14-73-0055	5/8-11 Spindle/Hub Assembly	(1)
★ 4	34-80-0210	Retaining Ring	(1)
★ 5	06-82-2380	#8-32 x 1/2" Pan Hd. Slit. Tapt. T-20 Screw	(6)
7	05-55-0620	Nut	(1)
8	32-60-0275	Bevel Pinion	(1)
10	-----	Armature	(1)
12	42-96-0177	Rubber Bearing Cup	(1)
13	06-82-3002	Pan Hd. Taptite T-10 ST Screw	(4)

FIG.	PART NO.	DESCRIPTION OF PART	NO. REQ.
★ 34	34-40-0270	O-Ring	(1)
★ 35	-----	Spindle Lock Pin	(1)
★ 36	42-40-0025	Bushing	(1)
★ 37	-----	Bevel Gear	(1)
★ 38	-----	Gearcase	(1)
★ 39	-----	5/8-11 Spindle	(1)
★ 40	44-86-0155	Retaining Plate	(1)
★ 50	16-10-0120	Armature Assembly	(1)
★ 52	49-96-0130	Spanner Wrench	(1)
★ 53	34-40-0330	O-Ring	(1)
★ 54	-----	Ball Bearing	(1)
★ 55	-----	Spring Pin	(1)
★ 56	05-90-0225	Spring Washer	(1)
★ 57	40-50-0780	Spring	(1)
★ 58	44-20-0065	Locking Tang	(1)
★ 59	05-81-0020	M3 x 6 Philips #2 Taptite Screw	(1)
★ 60	44-40-0215	5/8-11 Outer Disk Flange	(1)
★ 61	44-40-0245	5/8-11 Inner Disk Flange	(1)
★ 62	43-54-0155	4.5" T27 Guard (Standard)	(1)
★	43-54-0185	4.5" T1 Guard (Not Shown) (Optional)	(1)
★	42-62-0110	Side Handle (Not Shown)	(1)

★ = Part number change from previous service parts list.

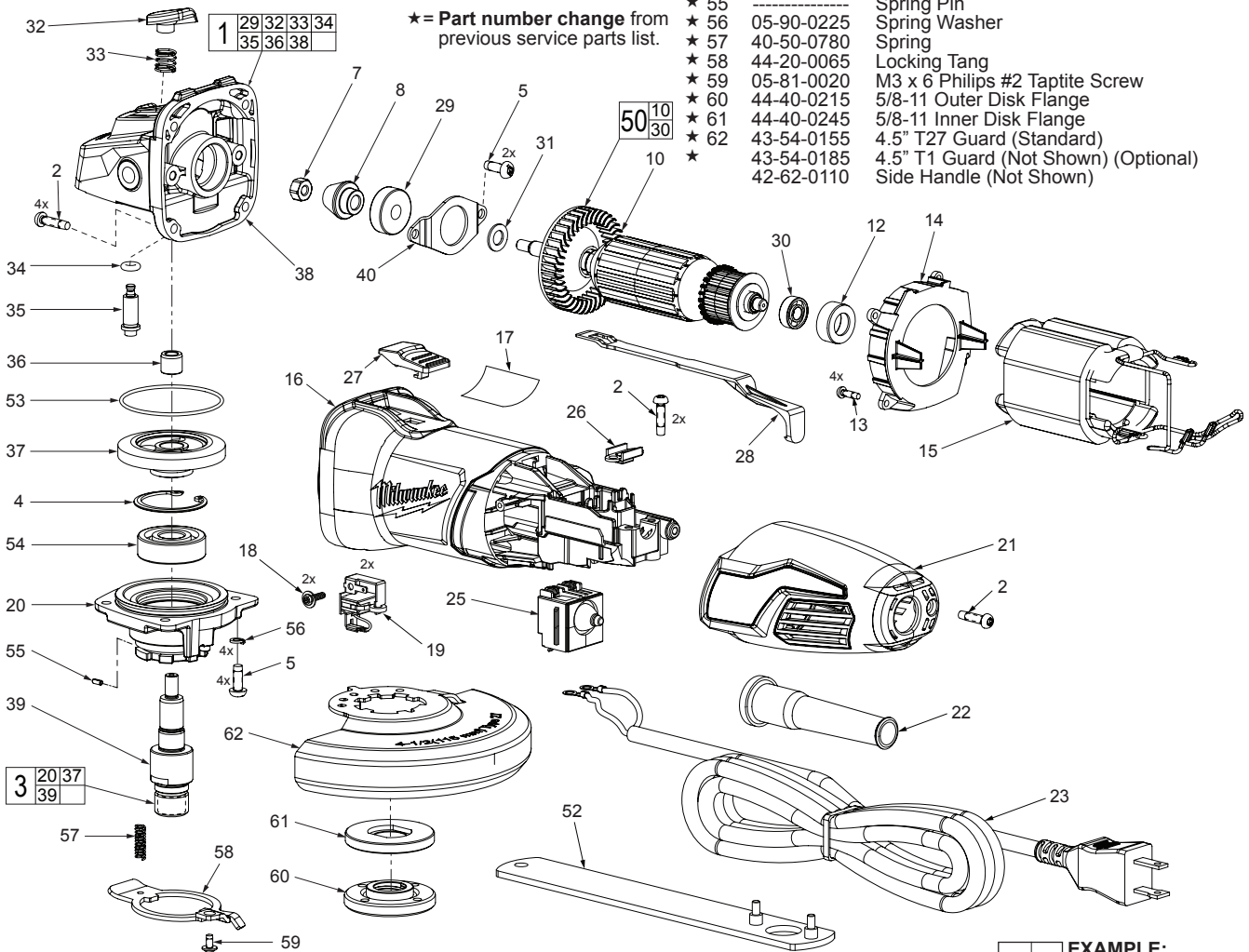


FIG.	PART NO.	DESCRIPTION OF PART	NO. REQ.
★ 14	42-14-0035	Baffle	(1)
★ 15	18-07-0176	Service Field Assembly	(1)
★ 16	31-50-0261	Motor Housing	(1)
★ 17	12-20-0105	Service Nameplate Kit	(1)
★ 18	05-88-1100	M3 x 10 Pan Hd. T-10 Screw	(2)
★ 19	22-22-0085	Carbon Brush Assembly	(2)
★ 20	-----	Lower Gearcase Hub	(1)
★ 21	31-44-0795	Rear Handle	(1)
★ 22	44-76-0210	Cord Protector	(1)
★ 23	22-64-0565	Cordset	(1)
★ 25	23-66-0385	Switch	(1)
★ 26	31-17-0040	Cord Clamp	(1)
★ 27	31-92-0075	Slide Switch Button	(1)
★ 28	31-92-0065	Slide Pole	(1)
★ 29	-----	Ball Bearing	(1)
★ 30	02-04-0110	Ball Bearing	(1)
★ 31	45-88-1995	Flat Washer	(1)
★ 32	-----	Spindle Lock Button	(1)
★ 33	40-50-1330	Spring	(1)

EXAMPLE:
Component Parts (Small #)
Are Included When Ordering
The Assembly (Large #).

*** LUBRICATION NOTE:** When servicing the Gears (8 & 37) or the Gearcase (38), 90-95% of the old grease must be removed prior to new grease being added.

FIG. LUBRICATION (*See lubrication note above):

- 8,37 Type "Y" Grease, No. 49-08-5270, Must Be Applied To All Gear Teeth.
- 4,38 Lightly coat with grease Retaining Ring and bearing bore in Gearcase.
- 38 .4 Ounces (13 Grams) Type "Y" Grease, No. 49-08-5270.

MILWAUKEE ELECTRIC TOOL CORPORATION
13135 W. Lisbon Road, Brookfield, WI 53005
Drwg. 1