



SERVICE PARTS LIST

BULLETIN NO.
54-40-1628

SPECIFY CATALOG NO. AND SERIAL NO. WHEN ORDERING PARTS		REVISED BULLETIN 54-40-1627	DATE Dec. 2012
METAL CUTTING SAW			
CATALOG NO. 6370-20	STARTING SERIAL NUMBER	A35D	
		SEE PAGE 4	

EXAMPLE:
Component Parts (Small #) Are Included
When Ordering The Assembly (Large #).

★ = Part number change from
previous service parts list.

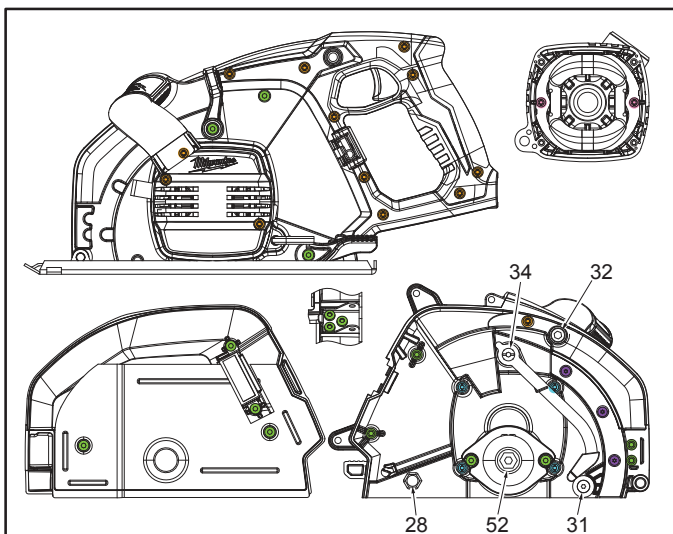
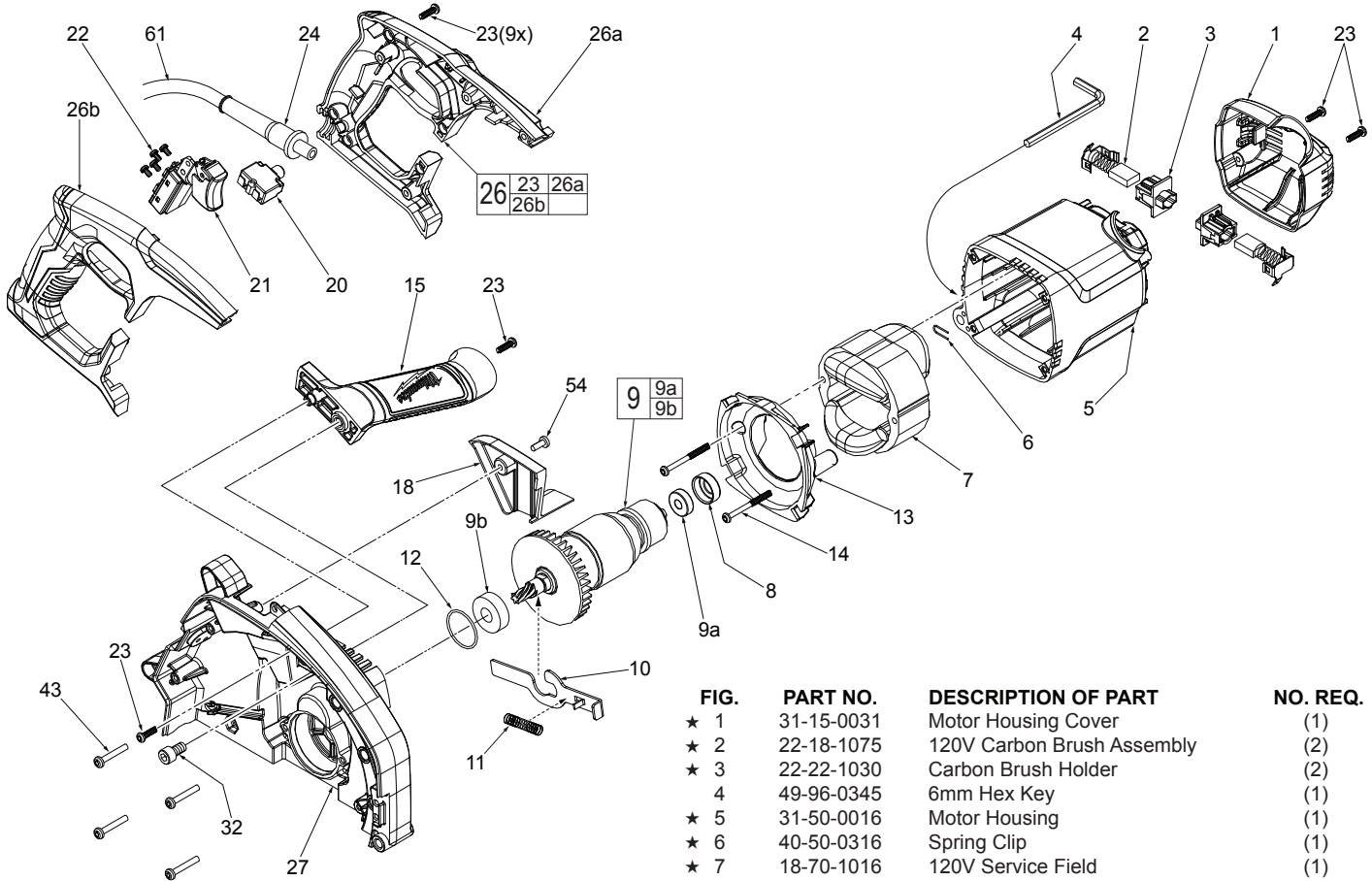


FIG.	PART NO.	DESCRIPTION OF PART	NO. REQ.
★ 1	31-15-0031	Motor Housing Cover	(1)
★ 2	22-18-1075	120V Carbon Brush Assembly	(2)
★ 3	22-22-1030	Carbon Brush Holder	(2)
★ 4	49-96-0345	6mm Hex Key	(1)
★ 5	31-50-0016	Motor Housing	(1)
★ 6	40-50-0316	Spring Clip	(1)
★ 7	18-70-1016	120V Service Field	(1)
★ 8	42-96-0026	Rubber Bearing Cup	(1)
★ 9	16-70-1016	120V Service Armature Assembly	(1)
★ 9a	02-04-0847	Ball Bearing	(1)
★ 9b	02-04-1850	Ball Bearing	(1)
★ 10	44-20-0016	Spindle Lock	(1)
★ 11	40-50-0346	Spindle Lock Spring	(1)
★ 12	34-40-1375	O-Ring	(1)
★ 13	31-05-0076	Fan Baffle	(1)
★ 14	06-82-7395	8-16 x 1.75" Pan Hd. Slit. Plast. T-20	(2)
★ 15	31-44-0226	Front Handle Assembly	(1)
★ 18	31-15-0036	Wire Cover	(1)
★ 20	22-36-0161	120V 15A Overload Protector	(1)
★ 21	23-66-2685	Switch	(1)
★ 22	05-78-0305	M3.5 x 0.6 x 0.7mm Pan Hd. Slit. T-15	(4)
★ 23	06-82-7270	8-16 x 5/8" Pan Hd. Plast. T-20	(13)
★ 24	44-76-0210	Cord Protector	(1)
★ 26	14-34-6370	Rear Handle Assembly	(1)
★ 26a	-----	Left Rear Handle Half	(1)
★ 26b	-----	Right Rear Handle Half	(1)
★ 27	28-14-0016	Gearcase	(1)
★ 32	06-75-3971	M8 x 1.25 Bolt	(1)
★ 43	05-88-9926	M5 x 16 x 2.14" Pan Hd. Taptite T-25	(4)
★ 54	06-82-5314	10-24 x 1/2" Pan Hd. Tapt. T-25 (1 of 16)	(16)
★ 61	22-64-0437	Power Cord	(1)
★ 62	23-94-1220	Leadwire Assembly - Black (Not Shown)	(1)

FIG.	PART NO.	DESCRIPTION	QTY.
● 54	06-82-5314	10-24 x 1/2" Pan Hd. Taptite T-25	(16)
● 23	06-82-7270	8-16 x 5/8" Pan Hd. Plastite T-20	(13)
● 43	05-88-9926	M5 x 16 x 2.14" Pan Hd. Tapt. T-25	(4)
● 37	06-82-3792	8-32 x 3/8" Flat Hd. Taptite T-15	(3)
● 14	06-82-7395	8-16 x 1.75" Pan Hd. Plastite T-20	(2)