



SERVICE PARTS LIST

BULLETIN NO.
54-42-6003

SPECIFY CATALOG NO. AND SERIAL NO. WHEN ORDERING PARTS		REVISED BULLETIN	DATE
ADJUSTABLE TORQUE SCREWDRIVER		54-42-6002	Sept. 2013
CATALOG NO. 6580-20	STARTING SERIAL NO. 098D	WIRING INSTRUCTION See Pages 3 & 4	

EXAMPLE:
Component Parts (Small #)
Are Included When Ordering
The Assembly (Large #).

★ = Part number change from
previous service parts list.

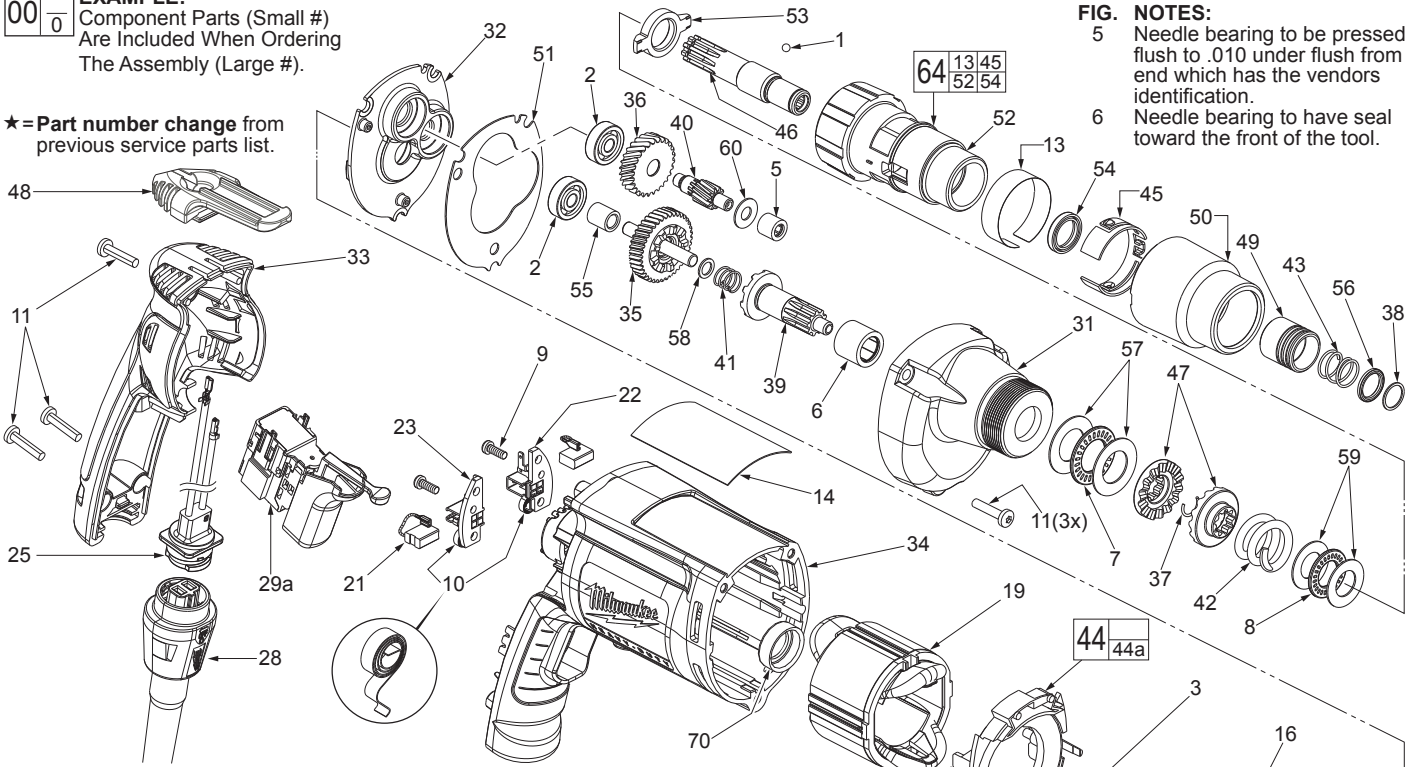


FIG. NOTES:
5 Needle bearing to be pressed flush to .010 under flush from end which has the vendors identification.
6 Needle bearing to have seal toward the front of the tool.

FIG.	PART NO.	DESCRIPTION OF PART	NO. REQ.
1	02-02-0130	Steel Ball	(1)
2	02-04-0640	Ball Bearing	(2)
3	02-04-0645	Ball Bearing	(1)
4	02-04-0852	Ball Bearing	(1)
5	02-50-2400	Needle Bearing	(1)
6	02-50-3245	Needle Roller Bearing	(1)
7	02-80-1200	Thrust Needle Bearing	(1)
8	02-80-6020	Thrust Bearing	(1)
9	05-88-1610	M3.5 x 10 Pan Hd. Plastite T-10 Scr	(2)
10	23-52-1610	Brush Spring	(2)
11	06-82-7275	7-18 x 3/4 Slotted Plastite Torx T-20	(6)
13	10-79-3100	Torque Setting Label	(1)
14	12-99-2665	Service Nameplate	(1)
16	16-10-2205	Armature	(1)
19	18-07-7210	Field	(1)
21	22-18-1310	Brush Assembly	(2)
22	22-20-0090	Left Brush Holder	(1)
23	22-20-0095	Right Brush Holder	(1)
25	22-56-1000	Blade Housing Assembly	(1)
28	48-76-5010	Quik-Lok Cord Set	(1)
29a	23-66-2605	Defond Switch (See page 3 wiring)	(1)
29b	23-66-2585	Marquardt Switch (See page 4 wiring)	(1)
31	28-14-2405	Gearcase	(1)
32	28-28-2315	Diaphragm	(1)
33	31-15-2030	Handle Halve	(1)
★34	31-50-0524	Motor Housing	(1)
35	32-10-4055	Clutch Gear Assembly	(1)
36	32-40-0100	Intermediate Gear	(1)
37	34-60-0545	Retaining Ring	(1)
38	34-60-2390	Retaining Ring	(1)
39	36-14-0665	Clutch Shaft Assembly	(1)
40	36-66-0105	Intermediate Shaft	(1)
41	40-50-6600	Separator Spring	(1)
42	40-50-8000	Clutch Spring	(1)
43	40-50-8005	Compression Spring	(1)
44	42-14-0460	Baffle Assembly	(1)
44a	45-30-0030	Slug (Not Shown)	(2)
45	42-16-0140	Adjustment Band	(1)
46	42-66-0676	Chuck Shaft	(1)
47	42-70-5016	Drive Clutch	(2)
48	42-70-5280	Belt Clip	(1)
49	42-76-0390	Locking Collar	(1)
50	42-76-0460	Adjustment Collar	(1)
51	43-44-0985	Gasket	(1)
52	43-76-0550	Clutch Housing	(1)
53	44-90-4280	Adjustment Ring	(1)

Cat. No. 31-53-0205
Lock Button Plug

FIG.	PART NO.	DESCRIPTION OF PART	NO. REQ.
54	45-06-0106	Oil Seal	(1)
55	45-36-1280	Spacer	(1)
56	45-36-1300	Spacer	(1)
57	45-88-0510	Thrust Bearing Washer	(2)
58	45-88-0712	Thrust Washer	(1)
59	45-88-7150	Thrust Washer	(2)
60	45-88-7990	Thrust Washer	(1)
64	14-08-0190	Clutch Housing Assembly	(1)
★70	43-86-0125	Bearing Cup	(1)
	23-94-0490	White Leadwire Assy. (See pages 3 & 4)	(1)
	23-94-0495	Red Leadwire Assy. (See pages 3 & 4)	(1)

LUBRICATION (Type "L" Grease, No. 49-08-4170)

• Place 1.8 gm. (.06 oz.) of grease on the drive clutch surfaces (47).

• Equally distribute 1.8 gm. (.06 oz.) of grease on the thrust bearings (7 and 8), oil seal (54) and the tabs of the adjustment ring (53).

LUBRICATION (Type "Y" Grease, No. 49-08-5270)

• Equally distribute 1.5 gm. (.05 oz.) of grease on the lugs of the clutch gear (35), clutch shaft (39), separator spring (41) and the thrust washer (58).

• In the gearcase (31), place 3.6 gm. (.13 oz.) of grease in the counterbore above the inserted intermediate needle bearing (5).

• Place 13 gm. (.46 oz.) of grease at the armature pinion location in the gearcase (31) and fill to the top of the intermediate gear (36).

Before assembly, lightly coat all press fit areas with lightweight spindle oil.

MILWAUKEE ELECTRIC TOOL CORPORATION
13135 W. LISBON RD., BROOKFIELD, WI 53005
Dwg. 1