



# SERVICE PARTS LIST

**BULLETIN NO.**  
**54-02-0355**

SPECIFY CATALOG NO. AND SERIAL NO. WHEN ORDERING PARTS		REVISED BULLETIN	DATE
<b>2 TON CHAIN HOISTS</b>			July 2010
<b>CATALOG NOS.</b> 9674-20, 9675-20 and 9676-20	<b>STARTING SERIAL NO.</b> <b>ND-B</b>	<b>WIRING INSTRUCTION</b> N/A	

00 0

**EXAMPLE:**  
Component Parts  
(Small #) Are Included  
When Ordering The  
Assembly (Large #).

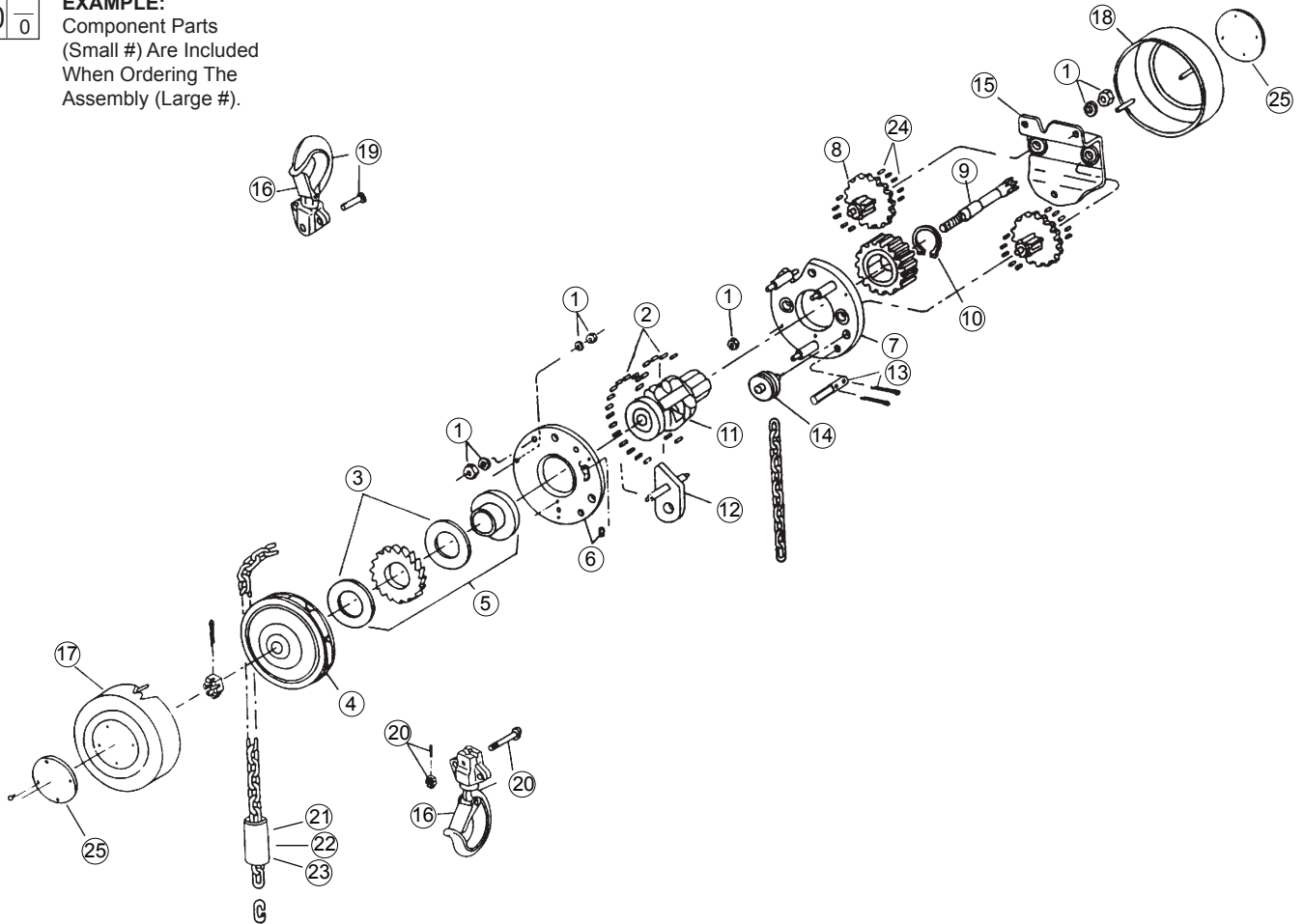


FIG.	PART NO.	DESCRIPTION OF PART	QTY
1	14-47-0880	Main Hardware Kit	(1)
2	14-47-0890	Liftwheel Roller Kit	(1)
3	45-88-8848	Washer-Friction	(2)
4	45-94-0430	Handwheel	(1)
5	14-47-0965	Brake Set	(1)
6	44-66-6191	Handwheel Side Plate (2 Ton)	(1)
7	44-66-6192	Geared Side Plate (2 Ton)	(1)
8	32-60-2665	Gear Set (2, 3 and 5 Ton)	(1)
9	36-66-9686	Pinion Shaft	(1)
10	14-47-0885	Pinion & Liftwheel Hardware Kit	(1)
11	45-11-0220	Liftwheel (2, 3 and 5 Ton)	(1)
12	44-77-0120	Stripper (2, 3 and 5 Ton)	(1)

FIG.	PART NO.	DESCRIPTION OF PART	QTY
13	44-60-1610	Loose End Pin Kit	(1)
14	43-56-0580	Chain Guide Roller	(1)
15	14-47-0895	Gear Cage w/Bushing	(1)
16	14-47-0950	Latch Kit (2 Ton)	(2)
17	42-92-1270	Handwheel Cover w/Studs	(1)
18	42-92-1275	Gear Cover w/Studs	(1)
19	14-47-0900	Upper Hook Kit (2 Ton)	(1)
20	14-36-0260	Lower Hook Kit (2 Ton)	(1)
21	10-15-1520	Warning Tube (English)	(1)
22	10-15-1525	Warning Tube (Spanish)	(1)
23	10-15-1530	Warning Tube (French)	(1)
24	44-96-0185	Gear Set Roller Kit	(1)
25	12-20-9674	Service Nameplate Kit (2 Ton)	(1)