

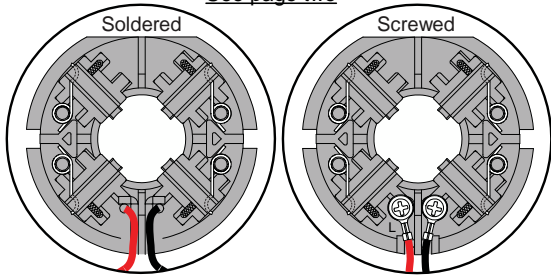


SERVICE PARTS LIST

BULLETIN NO.
54-24-2800

SPECIFY CATALOG NO. AND SERIAL NO. WHEN ORDERING PARTS		REVISED BULLETIN	DATE
28 VOLT 1/2" HAMMER-DRILL			Aug. 2014
CATALOG NO. 0726-20	STARTING SERIAL NO. C26A	WIRING INSTRUCTION SEE PAGE 3	

#77 Two styles of Brush Card Assemblies
See page two



EXAMPLE:
Component Parts (Small #) Are Included
When Ordering The Assembly (Large #).

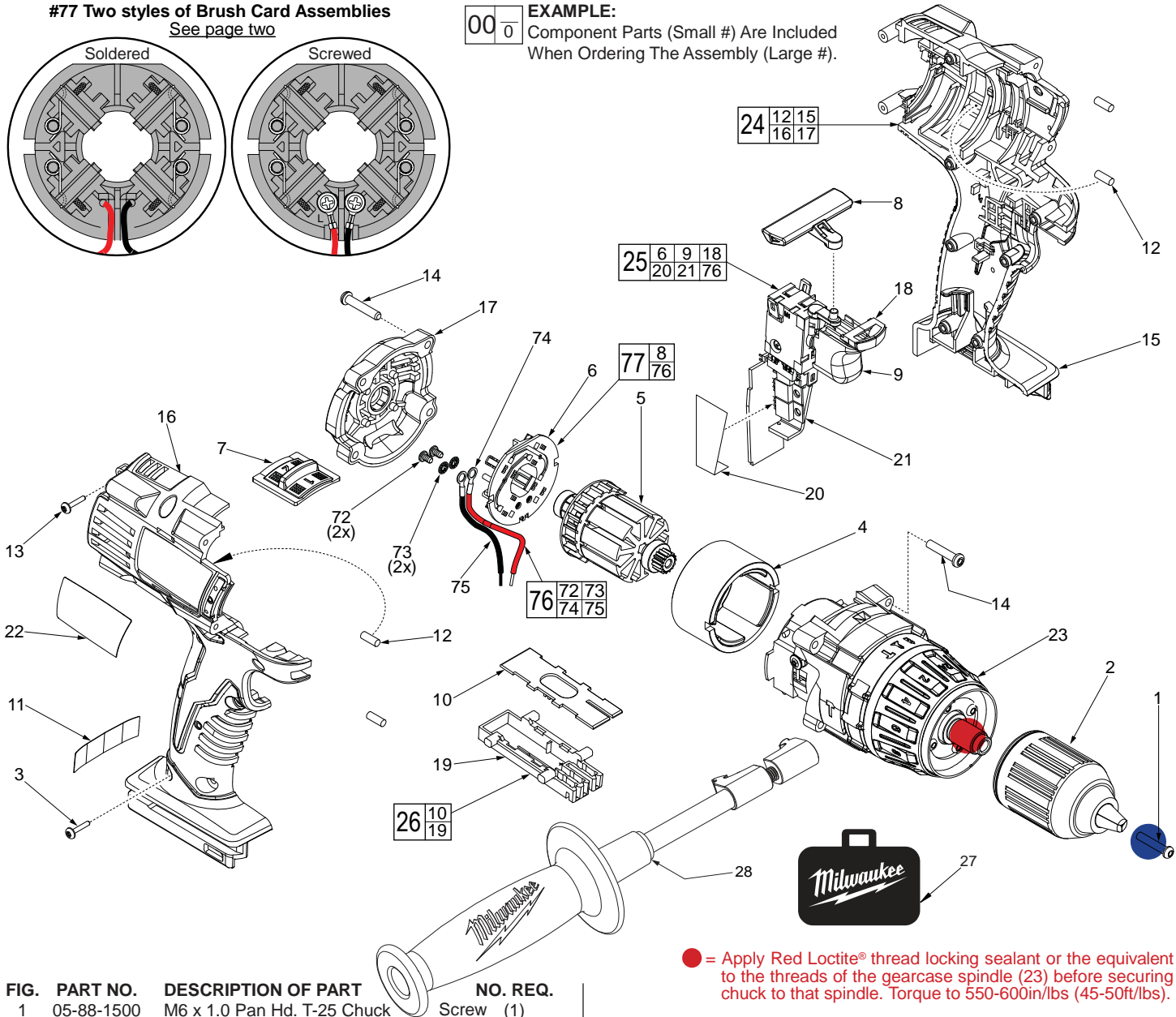


FIG.	PART NO.	DESCRIPTION OF PART	NO. REQ.
1	05-88-1500	M6 x 1.0 Pan Hd. T-25 Chuck Screw	(1)
2	42-66-0755	1/2" Keyless Chuck	(1)
3	06-82-2025	M3.5 Handle Screw T-10	(7)
4	18-01-3025	Service Field	(1)
5	16-01-3061	Service Armature Assembly	(1)
6	-----	Brush Card	(1)
7	45-24-0675	High / Low Shifter	(1)
8	42-42-0800	Forward / Reverse Button	(1)
9	-----	Switch	(1)
10	-----	Terminal Block Cover	(1)
11	10-20-2760	Warning Label	(1)
12	45-30-0255	Rubber Slug	(4)
13	06-82-6350	M3 x 16mm Handle Screw T-10	(2)
14	05-88-1710	M3.5 x 22mm End Cap/Gearcase Scr T-10	(8)
15	-----	Left Handle	(1)
16	-----	Right Handle	(1)
17	42-52-0390	End Cap	(1)
18	-----	LED Assembly	(1)
19	-----	Terminal Block	(1)
20	-----	Paper Insulator	(1)
21	-----	PCB Assembly	(1)
22	12-20-2811	Service Nameplate Kit	(1)
23	14-29-0400	Service Gearcase Assembly	(1)

● = Apply Red Loctite® thread locking sealant or the equivalent to the threads of the gearcase spindle (23) before securing chuck to that spindle. Torque to 550-600in/lbs (45-50ft/lbs).

● = Apply Blue Loctite® thread locking sealant or the equivalent to the threads of the chuck screw (1) before securing chuck to the gearcase spindle. Torque to 90-100in/lbs

FIG.	PART NO.	DESCRIPTION OF PART	NO. REQ.
24	31-44-2480	Service Housing Kit	(1)
25	23-66-1335	Switch / Brush Card Assembly	(1)
26	22-56-1185	Terminal Block Assembly	(1)
27	42-55-1050	Carrying Case	(1)
28	42-62-0526	Side Handle Assembly	(1)
72	05-88-0928	M3 x 5mm Pan Hd. T10 Screw	(2)
73	45-88-1980	Spring Washer	(2)
74	-----	Leadwire Assembly - Red	(1)
75	-----	Leadwire Assembly - Black	(1)
76	14-46-2395	Leadwire/Screw/Washer Kit	(1)
77	14-46-2018	Brush Card Assembly	(1)