



SERVICE PARTS LIST

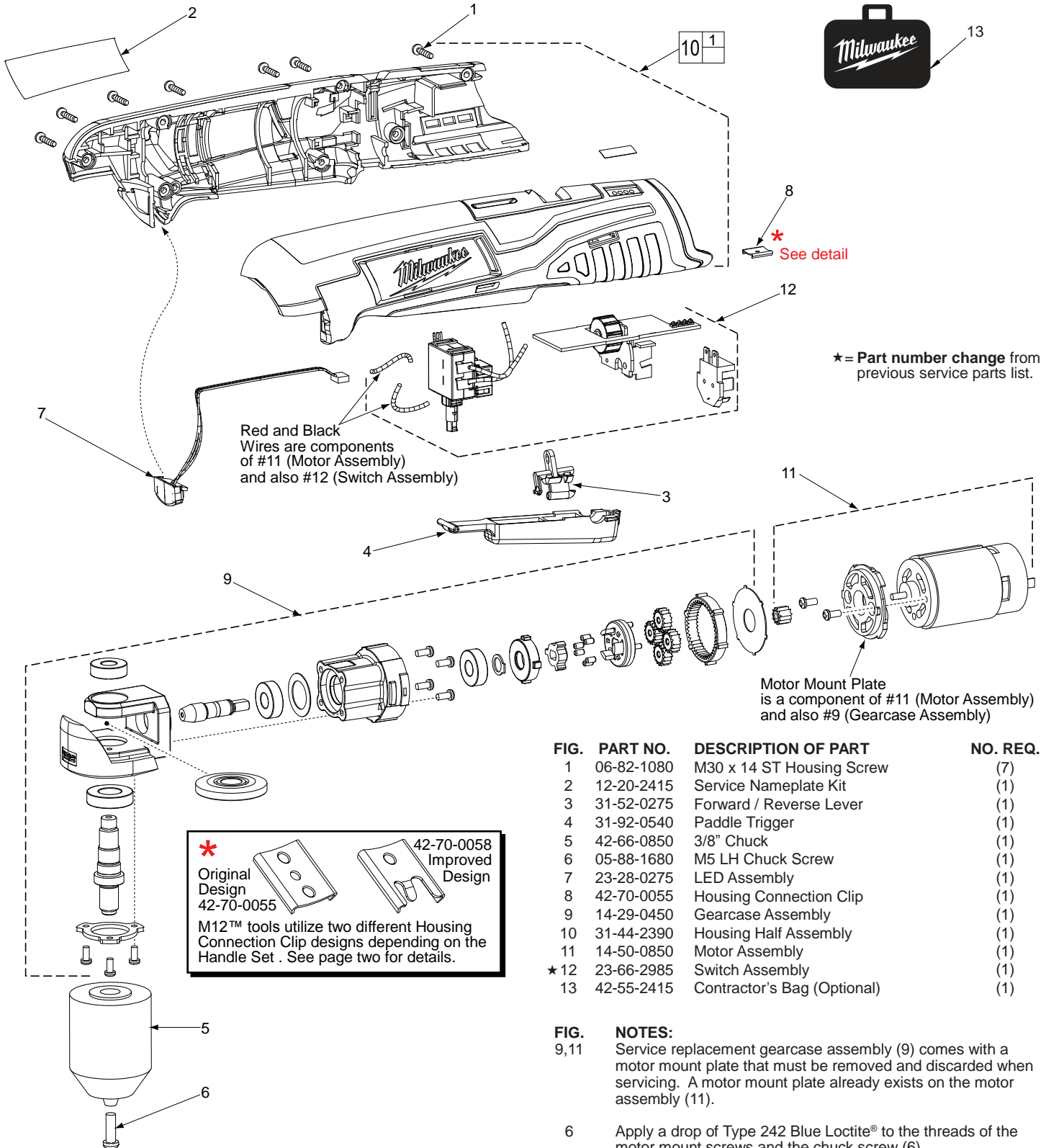
BULLETIN NO.
54-06-2416

SPECIFY CATALOG NO. AND SERIAL NO. WHEN ORDERING PARTS		REVISED BULLETIN 54-06-2415	DATE Feb. 2014
M12™ 3/8" RAD DRILL			
CATALOG NO.	2415-20	STARTING SERIAL NO.	C23B
		WIRING INSTRUCTION SEE PAGE 3	

EXAMPLE:

00	0
----	---

 Component Parts (Small #) Are Included When Ordering The Assembly (Large #).



★ = Part number change from previous service parts list.

FIG.	PART NO.	DESCRIPTION OF PART	NO. REQ.
	1	06-82-1080 M30 x 14 ST Housing Screw	(7)
	2	12-20-2415 Service Nameplate Kit	(1)
	3	31-52-0275 Forward / Reverse Lever	(1)
	4	31-92-0540 Paddle Trigger	(1)
	5	42-66-0850 3/8" Chuck	(1)
	6	05-88-1680 M5 LH Chuck Screw	(1)
	7	23-28-0275 LED Assembly	(1)
	8	42-70-0055 Housing Connection Clip	(1)
	9	14-29-0450 Gearcase Assembly	(1)
	10	31-44-2390 Housing Half Assembly	(1)
	11	14-50-0850 Motor Assembly	(1)
★	12	23-66-2985 Switch Assembly	(1)
	13	42-55-2415 Contractor's Bag (Optional)	(1)

FIG. 9,11 NOTES:
 Service replacement gearcase assembly (9) comes with a motor mount plate that must be removed and discarded when servicing. A motor mount plate already exists on the motor assembly (11).
 6 Apply a drop of Type 242 Blue Loctite® to the threads of the motor mount screws and the chuck screw (6).