



SERVICE PARTS LIST

BULLETIN NO.
54-24-2430

SPECIFY CATALOG NO. AND SERIAL NO. WHEN ORDERING PARTS		REVISED BULLETIN	DATE
M12 FUEL™ SDS Rotary Hammer			July 2013
CATALOG NO. 2416-20	STARTING SERIAL NO. F01A	WIRING INSTRUCTION SEE PAGE 4	

EXAMPLE:

Component Parts (Small #) Are Included When Ordering The Assembly (Large #).

● = Component of the 14-46-2416 Service Maintenance Kit. See Page 2.

NOTE: Fuel Gauge #67 is hot melted into Support Housing #59. Fuel gauge is than plugged into PCB#66.

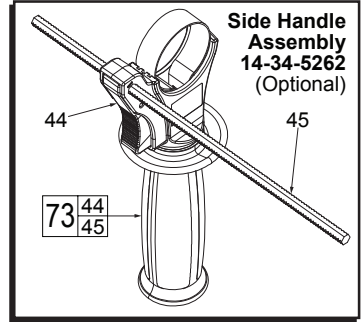
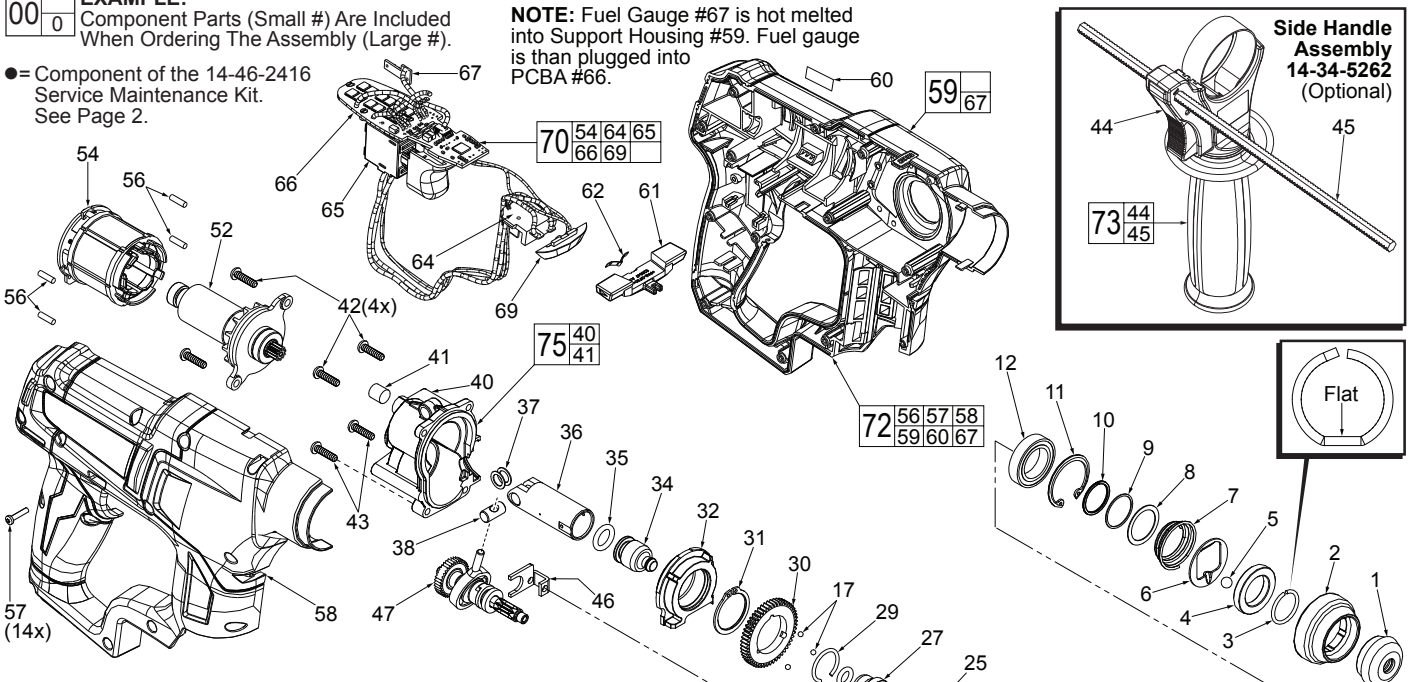


FIG.	PART NO.	DESCRIPTION OF PART	NO. REQ.
1	42-52-5262	● Cap	(1)
2	42-96-0035	● Sleeve	(1)
3	44-90-0106	● Snap Ring	(1)
4	44-90-0107	● Holding Ring	(1)
5	02-02-0146	● 6.5mm Steel	(1)
6	42-36-0039	● Support Plate	(1)
7	40-50-5262	● Pressure Spring	(1)
8	45-88-0226	● Flat Washer	(1)
9	45-88-0227	● Flat Washer	(1)
10	44-90-0108	● Spiral Retaining Ring	(1)
11	34-80-0210	● Retaining Ring	(1)
12	02-04-0315	● Ball Bearing	(1)
13	05-84-0005	● M3 x 0.5mm x 8.0mm Socket Screw	(1)
14	45-88-0107	● Flat Washer	(1)
15	-----	● Gearcase with Shift Pin	(1)
16	40-50-1220	● Spring	(1)
17	02-02-1230	● 3.0 Steel Ball	(4)
18	44-10-0605	● Shift Knob	(1)
19	02-04-0325	● Ball Bearing	(1)
20	34-40-0533	● O-Ring	(1)
21	05-81-0020	● M3.0 x 5 Pan Hd. ST Screw	(2)
23	40-50-1215	● Shifter Spring	(1)
24	38-50-1040	● Spindle	(1)
25	45-08-0505	● Anvil	(1)
26	34-40-0530	● O-Ring	(1)
27	45-22-0008	● Sleeve	(1)
28	34-40-0531	● O-Ring	(1)
29	44-90-0109	● Snap Ring	(1)
30	32-44-1130	● 2nd Stage Gear	(1)
31	34-60-0140	● Retaining Ring	(1)
32	28-72-0035	● Bearing Holder Assy. with Needle Bearing	(1)
34	45-56-0025	● Striker (Ram)	(1)
35	34-40-0532	● O-Ring	(1)
36	44-62-0147	● Piston	(1)
37	45-88-0228	● Wrist Washer	(2)
38	44-60-0555	● Wrist Pin	(1)
39	10-20-1341	● Warning Label (Not Shown)	(1)
40	-----	● Rear Gearcase	(1)
41	43-84-0300	● Felt Plug	(1)
42	05-74-0010	● M4 x 16mm Pan Hd. T-20 Screw	(4)
43	05-74-0012	● M4 x 20 Screw	(2)
44	14-34-0650	● Auxiliary Side Handle (Optional)	(1)
45	44-94-5381	● Depth Rod (Optional)	(1)
46	44-66-0405	● Shifting Clip	(1)
47	36-92-0300	● Wobble Shaft Assembly	(1)
52	14-50-0050	● Rotor Assembly	(1)
54	-----	● Stator	(1)
56	45-30-0270	● Rubber Slugs	(4)
57	06-82-2385	● M3 x 14mm Pan Hd. Plastite T-10 Screw	(14)

See page 2 for fastener torque chart



FIG.	PART NO.	DESCRIPTION OF PART	NO. REQ.
58	-----	● Cover Housing	(1)
59	-----	● Support Housing with Fuel Gauge	(1)
60	10-20-0304	● Fuel Gauge Label	(1)
61	42-42-0185	● Forward / Reverse Shuttle	(1)
62	40-50-1135	● Shuttle Spring	(1)
63	12-20-2416	● Service Nameplate (Not Shown)	(1)
64	-----	● Contact Plate Holder	(1)
65	-----	● Switch	(1)
66	-----	● PCB Assembly	(1)
67	-----	● Fuel Gauge	(1)
68	42-55-2416	● Carrying Case	(1)
69	-----	● LED Lens	(1)
70	23-66-2416	● Switch / Electronics Assembly	(1)
71	44-10-0610	● Shift Knob Assembly	(1)
72	14-34-0620	● Handle Housing Assy. with Fuel Gauge	(1)
73	14-34-5262	● Side Handle Assembly (Optional)	(1)
74	38-50-1035	● Spindle Assembly	(1)
75	14-30-0070	● Rear Gearcase Assy. with Needle Bearing	(1)
76	14-30-0066	● Front Gearcase Assembly	(1)

FIG. 3,24 NOTE: There is a 'flat' that is opposite the opening on the snap ring. Align 'flat' on snap ring with 'flat' on spindle.

5,6 Position ball notch on support plate and ball towards 'flats'.

13 Apply a drop of Blue Loctite® 242 or the equivalent to the threads of screw prior to installing in front gearcase.