



# SERVICE PARTS LIST

**BULLETIN NO.**  
**54-40-2430**

SPECIFY CATALOG NO. AND SERIAL NO. WHEN ORDERING PARTS		REVISED BULLETIN	DATE
<b>CORDLESS M12 COMPACT BAND SAW</b>			Apr. 2012
CATALOG NO. <b>2429-20</b>	STARTING SERIAL NO. <b>E25A</b>	WIRING INSTRUCTION <b>SEE PAGE 3</b>	

**EXAMPLE:**  
Component Parts (Small #)  
Are Included When Ordering  
The Assembly (Large #).

**SEE ADJACENT PAGES  
FOR ADDITIONAL SERVICE  
NOTES, LUBRICATION  
AND WIRING**

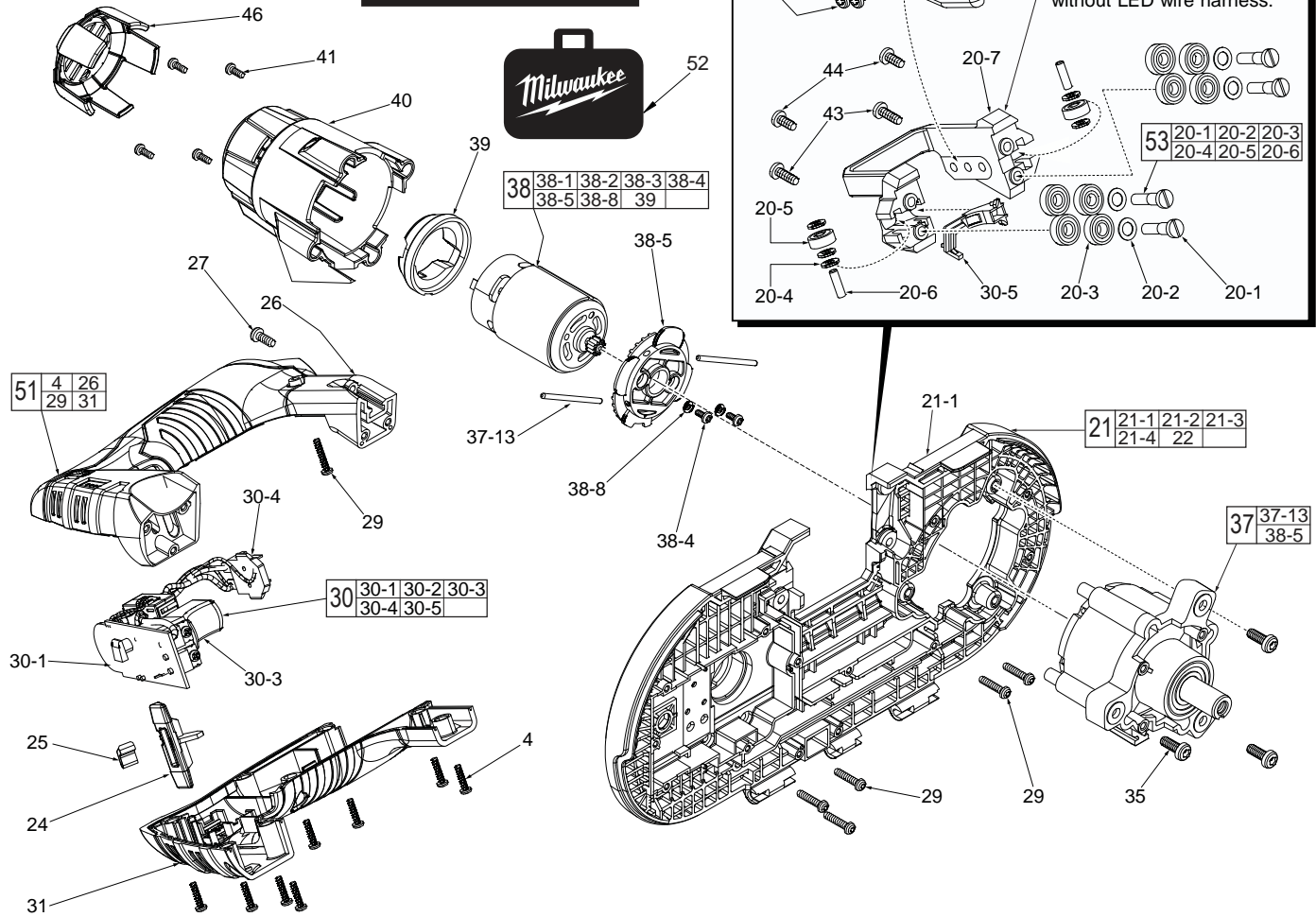
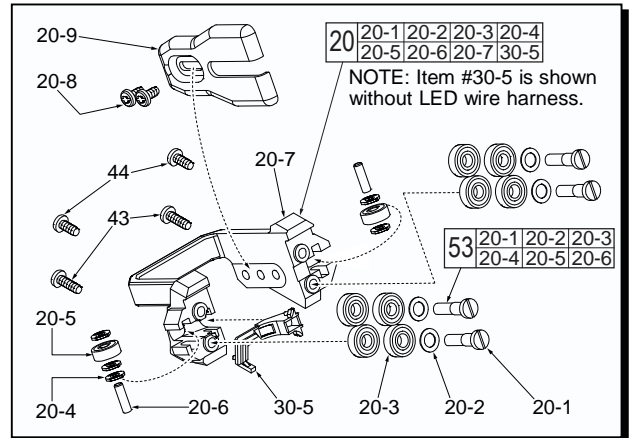


FIG.	PART NO.	DESCRIPTION OF PART	NO. REQ.
4	06-82-7225	4-20 x 1/2" Pan Hd. Plast. T-10 Screw	(8 of 22)
20	42-28-2429	Blade Guide Assembly	(1)
20-1	-----	12-24 x .96 Slotted UNC Screw	(4)
20-2	-----	Washer	(4)
20-3	-----	Ball Bearing	(8)
20-4	-----	Washer	(5)
20-5	-----	Ball Bearing	(2)
20-6	-----	Steel Pin	(2)
20-7	42-28-2430	Blade Guide	(1)
20-8	06-82-8828	8-32 x 5/16" Pan Hd. Taptite T-20 Screw	(2)
20-9	42-38-2429	Bumper	(1)
21	28-95-2430	Deck Assembly	(1)
21-1	-----	Deck	(1)
24	45-24-2429	Shuttle	(1)
25	40-50-0665	Shuttle Spring	(1)
26	-----	Handle Support	(1)
27	06-82-3001	Pan Hd. Taptite Phillips Screw	(1)
29	06-82-2025	Pan Hd. Plastite T-10 Screw	(6)
30	23-66-4500	Switch Assembly	(1)
30-1	-----	PCB Assembly	(1)
30-2	23-48-2429	Fiber Tube (Not Shown, see wiring pages)	(2)
30-3	-----	Switch	(1)
30-4	-----	Battery Contact Plate	(1)
30-5	22-80-2429	LED Holder	(1)
31	-----	Handle Cover	(1)
35	06-82-7409	8-16 x 1/2" Pan Hd. Plastite T-20 Screw	(3)

FIG.	PART NO.	DESCRIPTION OF PART	NO. REQ.
37	14-30-2429	Gear Box Assembly	(1)
37-13	-----	Pin	(2)
38	14-30-2430	Motor Assembly	(1)
38-1	23-94-2429	Red Motor Wire (Not Shown, see wiring)	(1)
38-2	23-94-2430	White Motor Wire (Not Shown, see wiring)	(1)
38-3	23-48-2430	Fiber Tube (Not Shown, see wiring)	(1)
38-4	05-81-0205	M3 x 6 Pan Hd. Phillips Screw	(2)
38-5	-----	Motor Mount Bracket	(1)
38-8	05-90-0050	3mm Lock Washer	(2)
39	31-12-2429	Rubber Motor Ring	(1)
40	31-15-2430	Motor Cover	(1)
41	06-82-3002	Pan Hd. Taptite T-10 ST Screw	(4)
43	06-82-5316	8-32 x 0.5" Pan Hd. Taptite T-20 Screw	(2)
44	06-82-7253	8-32 x .375" Pan Hd. Taptite T-20 Screw	(3)
46	42-52-2429	Motor Housing Cap	(1)
51	31-44-2429	Handle Assembly	(1)
52	42-55-2429	Carrying Case	(1)
53	14-46-0465	Guide Roller Kit	(1)