

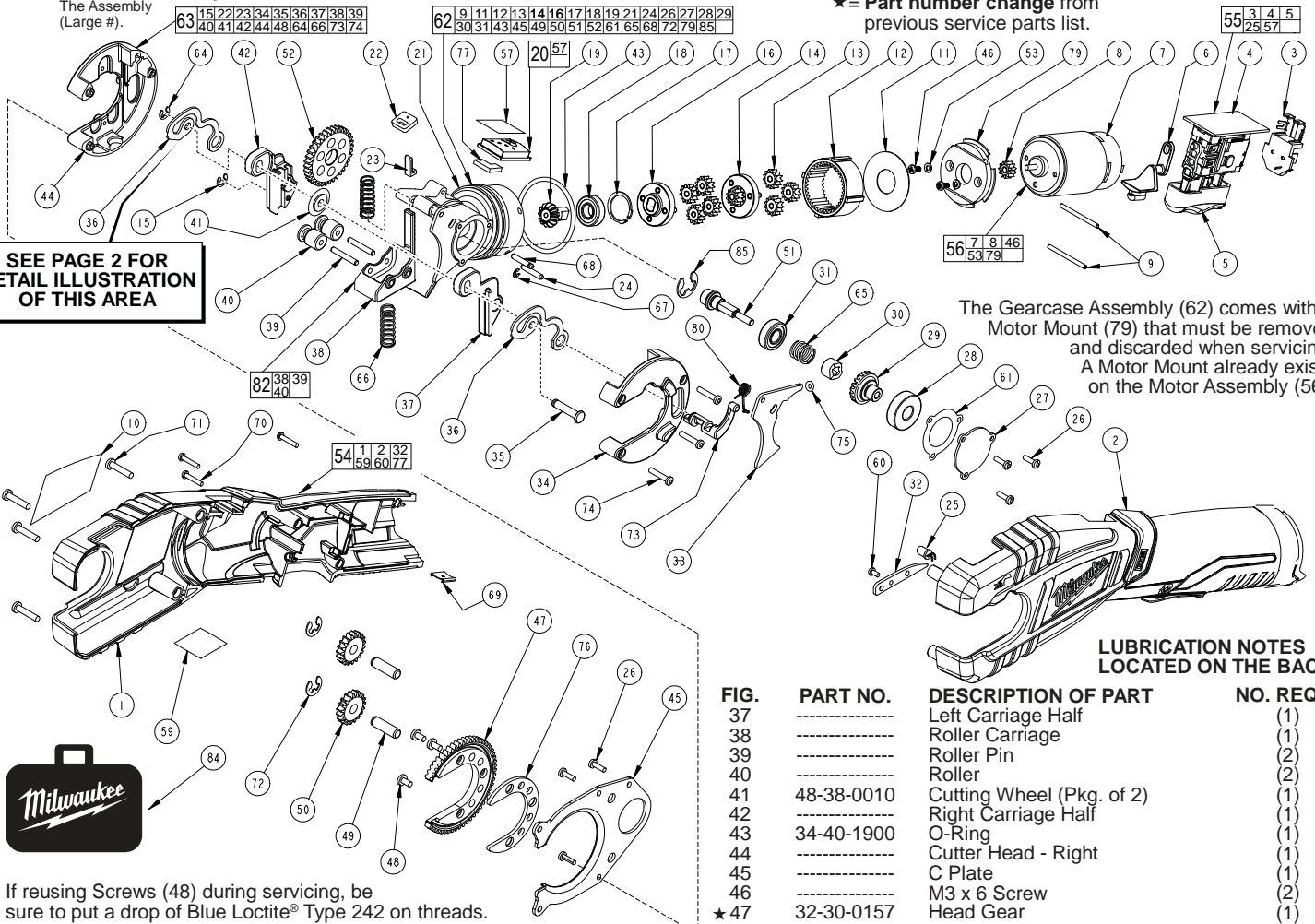


# SERVICE PARTS LIST

**BULLETIN NO.**  
54-27-2472

SPECIFY CATALOG NO. AND SERIAL NO. WHEN ORDERING PARTS		REVISED BULLETIN 54-27-2471	DATE Mar. 2015
<b>M12™ Copper Tubing Cutter</b>		WIRING INSTRUCTION <b>SEE PAGE THREE</b>	
CATALOG NO. <b>2471-20</b>	STARTING SERIAL NO. <b>B61C</b>		

**EXAMPLE:**  
Component Parts (Small #) Are Included When Ordering The Assembly (Large #).



If reusing Screws (48) during servicing, be sure to put a drop of Blue Loctite® Type 242 on threads.

FIG.	PART NO.	DESCRIPTION OF PART	NO. REQ.
1	-----	Right Handle	(1)
2	-----	Left Handle	(1)
3	-----	Connector Block	(1)
4	-----	PCBA	(1)
5	-----	Switch	(1)
6	31-52-0125	Reversing Lever	(1)
7	-----	Motor	(1)
8	-----	Pinion	(1)
9	44-60-1530	Pin	(2)
10	12-20-2470	Service Nameplate Kit	(1)
11	-----	Plate	(1)
12	-----	Ring Gear	(1)
13	-----	Planet - 1st Stage	(7)
14	-----	Carriage - 1st Stage	(1)
15	42-70-0505	E Clip	(1)
16	-----	Carriage	(1)
17	-----	Snap Ring	(1)
18	-----	Bearing	(1)
19	-----	Bevel Pinion	(1)
20	22-06-0130	Fuel Gauge Assembly	(1)
21	-----	Gearcase Housing	(1)
★ 22	44-66-0827	Locking Plate	(1)
23	-----	Lifter	(1)
24	-----	Stop Pin	(1)
25	23-28-0020	Service LED	(1)
26	06-82-5268	4-40 x 3/8" Pan Hd. Slit. Tapt. T-10	(6)
27	-----	Plate Cover	(1)
28	-----	Bearing	(1)
29	32-05-0205	Bevel Gear	(1)
30	32-10-0240	Clutch Cam	(1)
31	-----	Bearing	(1)
32	-----	Fixed Cam	(1)
33	44-10-0490	Stop Lever	(1)
34	-----	Cutter Head - Left	(1)
35	42-12-0210	Axle	(1)
36	40-50-0585	Cutting Spring	(2)

FIG.	PART NO.	DESCRIPTION OF PART	NO. REQ.
37	-----	Left Carriage Half	(1)
38	-----	Roller Carriage	(1)
39	-----	Roller Pin	(2)
40	-----	Roller	(2)
41	48-38-0010	Cutting Wheel (Pkg. of 2)	(1)
42	-----	Right Carriage Half	(1)
43	34-40-1900	O-Ring	(1)
44	-----	Cutter Head - Right	(1)
45	-----	C Plate	(1)
46	-----	M3 x 6 Screw	(2)
★ 47	32-30-0157	Head Gear	(1)
48	05-80-0476	M3.5 x 8mm Flat Head Screw	(3)
49	-----	Axle Pin Idler	(2)
50	-----	Gear Drive	(2)
51	-----	Axle Drive	(1)
52	-----	Gear M3	(1)
53	-----	Washer	(2)
54	31-44-0246	Handle Set	(1)
55	23-66-0875	Switch PCBA	(1)
56	14-50-0205	Motor Assembly	(1)
57	10-20-4420	Fuel Gauge Label	(1)
59	10-15-0955	Warning Label	(1)
60	-----	M2.6 x 5 Screw	(1)
61	43-44-0075	Gasket	(1)
★ 62	14-29-0158	Gearcase Assembly	(1)
★ 63	43-64-0287	Cutter Head Assembly	(1)
64	42-70-0500	E Clip	(1)
65	40-50-0525	Clutch Spring	(1)
66	40-50-0580	Carriage Spring	(2)
67	42-70-0525	E Clip	(1)
68	-----	Pin Pivot	(1)
69	42-70-0058	Housing Connection Clip	(1)
70	06-82-2385	M2.6 x 14 Screw	(3)
71	06-81-0005	M3.5 x 1.34 Screw	(4)
72	42-70-0550	E Clip	(2)
73	36-10-0840	Cam Shaft	(1)
74	05-81-0245	4-40 x 5/8" Phillips Hd. Screw	(3)
75	34-40-1905	O-Ring	(1)
★ 76	32-30-0161	Head Gear Spacer	(1)
77	42-28-0075	Rubber Block	(1)
79	-----	Motor Mount	(1)
80	40-50-0605	Torsion Spring	(1)
82	43-72-0285	Roller Carriage Assembly	(1)
84	42-55-2471	Carrying Case, Optional	(1)
★ 85	42-70-0625	E-Clip	(1)

**MILWAUKEE ELECTRIC TOOL CORPORATION**  
13135 W. Lisbon Road, Brookfield, WI 53005  
Drwg. 1