

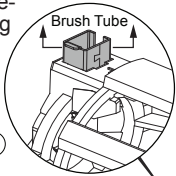


# SERVICE PARTS LIST

**BULLETIN NO.**  
**54-40-2625**

SPECIFY CATALOG NO. AND SERIAL NO. WHEN ORDERING PARTS		REVISED BULLETIN	DATE
<b>M18™ Sawzall®</b>		54-40-2624	Feb. 2017
<b>CATALOG NO.</b>	<b>2620-20</b>	<b>WIRING INSTRUCTION</b>	
	<b>STARTING SERIAL NO.</b>	<b>SEE PAGE TWO</b>	
	<b>B58F</b>		

**NOTE:** Pull both Brush Tubes (25) back before removing or installing the Armature (21) to prevent damage to the commutator.



**IMPORTANT:** Field (22) to be assembled with taper to back and square groove to the top. Orient the Motor Cage (35) with tap to the top. Insert in groove.



**EXAMPLE:** Component Parts (Small #) Are Included When Ordering The Assembly (Large #).

★ = Part number change from previous service parts list.

**NOTE:** Bolt (5) is right hand thread.

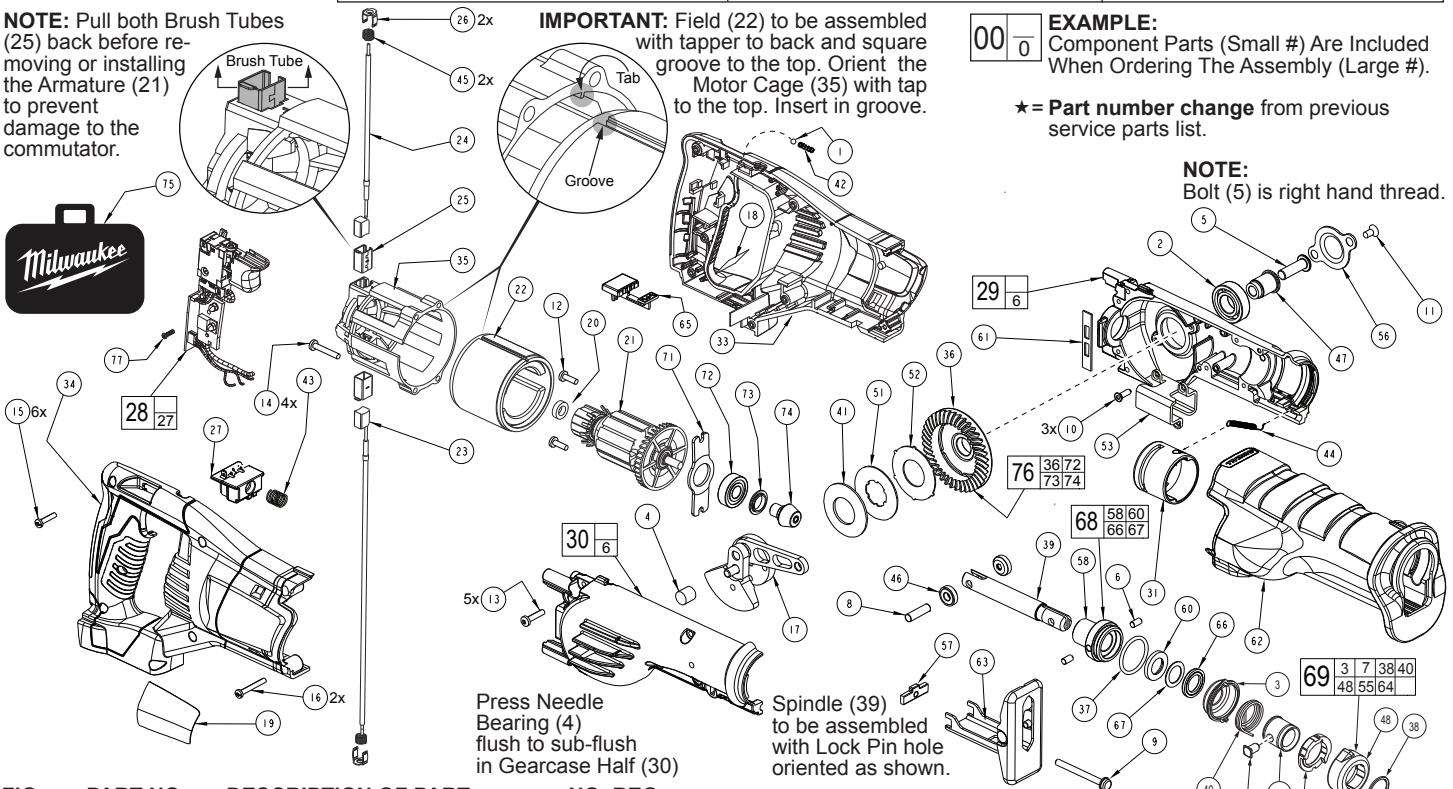


FIG.	PART NO.	DESCRIPTION OF PART	NO. REQ.
1	02-02-1100	4mm Ball	(1)
2	02-04-1516	Ball Bearing	(1)
3	-----	Spring Cover	(1)
4	02-50-1640	Needle Bearing	(1)
5	06-08-0017	3/16" Hex Drive Hub Bolt- <u>RH Thread</u> -1.125" long	(1)
6	-----	Pivot Pin	(2)
7	-----	Rear Cam	(1)
8	06-65-2995	Pin	(1)
9	06-81-0065	10-32 x 2" Bolt	(1)
10	06-82-3830	8-32 x 1/2" Csk Macine Screw	(3)
11	06-82-3900	3/8" DG50 Thread Form Screw	(2)
12	06-82-5316	8-32 x 1/2" Pan Hd. Taptite T-20 Screw	(2)
13	06-82-5346	8-32 x 3/4" Pan Hd. Taptite T-20 Screw	(5)
14	06-82-2620	8-32 x 1" Pan Hd. Taptite T-20 Screw	(4)
15	06-82-7261	6-19 x 11/16" Pan Hd. Slit. Plast. T-15	(6)
16	06-82-7290	6-19 x 1-1/8" Pan Hd. Slit. Plast. T-15	(2)
17	14-09-0185	Crank Assembly- <u>Right Hand Thread</u>	(1)
18	10-15-0955	Warning Label	(1)
19	12-20-2620	Service Nameplate Kit	(1)
20	02-04-2620	Ball Bearing	(1)
21	16-01-2621	Service Armature with Fan	(1)
22	18-01-2621	Service Field	(1)
★ 23	22-18-2625	Carbon Brush Assembly - Black	(1)
★ 24	22-18-2623	Carbon Brush Assembly - Red	(1)
25	22-20-0860	Brush Tube	(2)
26	22-32-0400	Brush Spring Clip	(2)
27	22-56-1376	Terminal Block Assembly	(1)
★ 28	23-66-0286	Switch/PCBA Assembly	(1)
29	28-14-0210	Gearcase Assembly - Left	(1)
30	28-14-0060	Gearcase Assembly - Right	(1)
31	31-11-0105	Barrel Cam	(1)
★ 33	31-44-2627	Handle - Left	(1)
★ 34	31-44-2622	Handle - Right	(1)
35	31-50-2620	Motor Cage	(1)
36	32-05-0115	Spiral Bevel Gear	(1)
37	34-40-0035	O-Ring	(1)
38	34-60-3700	Retaining Ring	(1)
39	38-50-0260	Spindle	(1)

FIG.	PART NO.	DESCRIPTION OF PART	NO. REQ.
40	-----	Torsion Spring	(1)
41	40-50-0595	Disc Spring	(1)
42	40-50-0930	Compression Spring	(1)
43	40-50-1090	Compression Spring	(1)
44	40-50-8805	Extension Spring	(1)
45	40-50-8840	Brush Spring	(2)
46	42-40-0020	Spindle Pin Bushing	(2)
47	42-40-0077	Spacer	(1)
48	-----	Front Cam	(1)
51	43-06-0025	Metal Plate	(1)
52	43-06-0030	Metal Plate	(1)
53	43-56-0094	Orbit Slot	(1)
55	-----	Lock Pin	(1)
56	44-66-0280	Bearing Retaining Plate	(1)
57	44-66-0285	Retaining Plate	(1)
58	-----	Front Bushing Carrier	(1)
60	-----	Felt Seal	(1)
61	45-06-0790	Seal	(1)
62	45-12-0025	Gearcase Insulator	(1)
63	45-16-0025	Shoe Assembly	(1)
64	-----	Sleeve	(1)
65	45-24-0045	Shuttle Switch	(1)
66	-----	Bushing Cap	(1)
67	-----	Washer	(1)
68	38-50-6490	Front Bushing Carrier Assembly	(1)
69	14-46-1064	Blade Clamp Assembly	(1)
71	44-66-5335	Bearing Retainer Plate	(1)
72	02-04-0999	Ball Bearing	(1)
73	45-28-0025	Grease Slinger	(1)
74	32-60-0135	Pinion Gear	(1)
75	42-55-2620	Accessory Carrying Case	(1)
76	14-29-0390	Gear Assembly	(1)
★ 77	06-82-2395	M2.6 x 10mm Pan Hd. Plast. T-9 Screw	(1)

**SEE ADDITIONAL SERVICE NOTES ON FOLLOWING PAGES**

**MILWAUKEE TOOL • www.milwaukeetool.com**

13135 W. Lisbon Road, Brookfield, Wisc. 53005

Drwg. 3