



SERVICE PARTS LIST

BULLETIN NO.
54-44-2620

SPECIFY CATALOG NO. AND SERIAL NO. WHEN ORDERING PARTS		REVISED BULLETIN	DATE
M18™ Metal Cutting Shear with 18 Ga. Single Cut Head			Sept. 2014
CATALOG NO. 2637-20	STARTING SERIAL NO. F88A	WIRING INSTRUCTION SEE PAGE THREE	

EXAMPLE:
00 0 Component Parts (Small #) Are Included
When Ordering The Assembly (Large #).

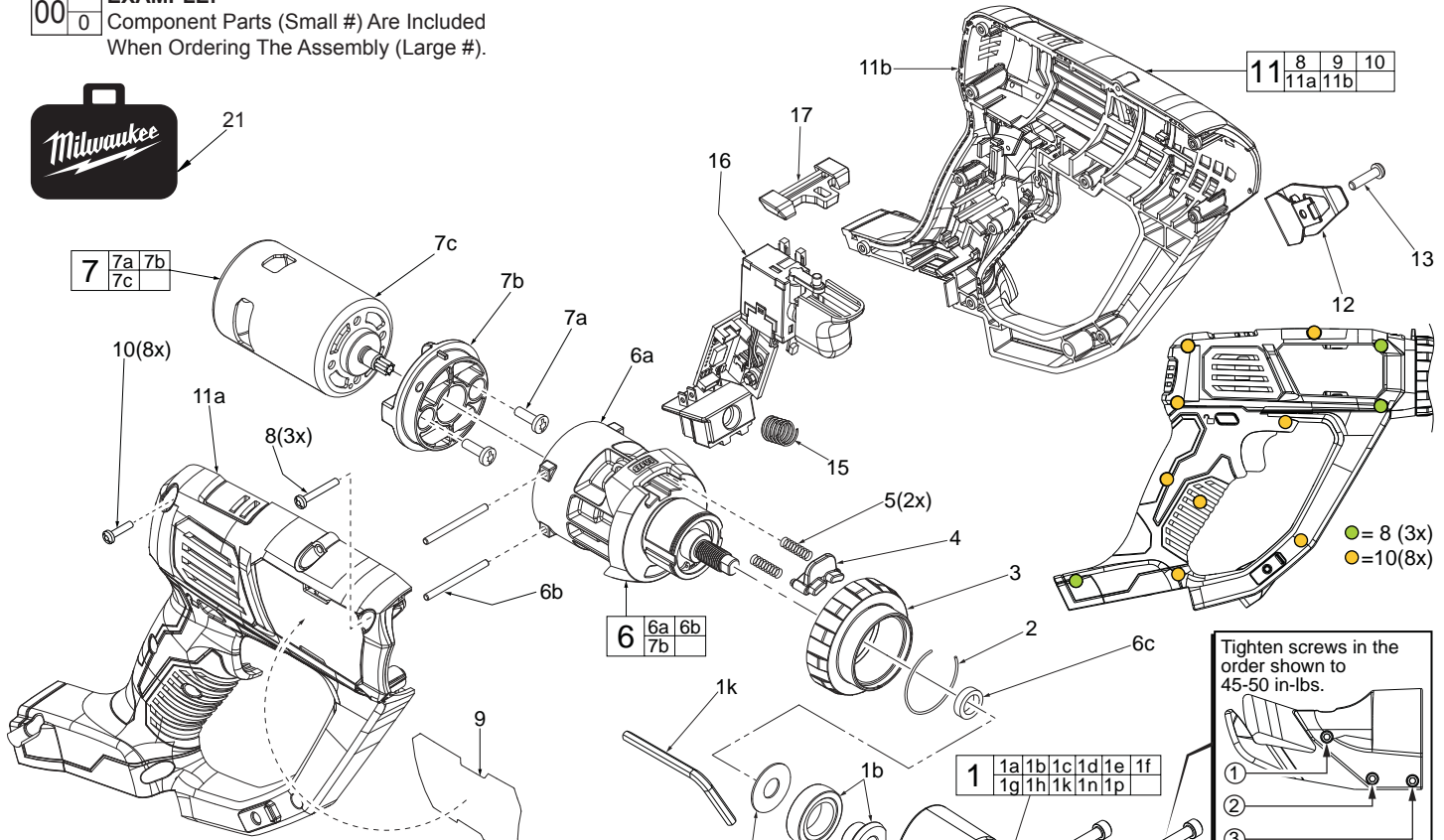


FIG.	PART NO.	DESCRIPTION OF PART	NO. REQ.
	1	48-08-0507 Shear Head Assy. (Includes 1a thru 1p)	1
	1a	45-88-7310 Washer	1
	1b	43-16-0117 Eccentric Assembly	1
	1c	43-84-0461 Knurled Insert	3
	1d	43-76-0417 Shear Housing	1
	1e	06-75-2116 10-32 x 1-1/4" Skt. Hd. Cap Screw	3
	1f	48-44-0167 Side Knife	1
	1g	42-40-0527 Bushing	2
	1h	48-44-0157 Blade - Center	1
	1k	49-96-0070 5/32" Hex Allen Wrench	1
	1n	42-40-0528 Spacer Bushing	1
	1p	42-40-0529 Side Spacer	1
	2	34-60-0905 'C' Retaining Ring	1
	3	28-84-0130 Rotational Collar	1
	4	31-52-0070 Rotational Head Release Lever	1
	5	40-50-1085 Spring	2
	6	14-30-2637 Gearbox Assembly	1
	6a	----- Gearbox	1
	6b	----- 2.5mm x 47mm Steel Pin	2
	6c	45-88-7940 Washer (Spacer)	1
	7	14-50-2635 Motor Assembly	1
	7a	----- M5.0 x 12mm Screw	2
	7b	----- Motor Mount Plate	1
	7c	----- Motor	1
	8	05-86-0300 M3.0 x 22.5mm Pan Hd. ST T-10 Screw	3
	9	12-20-2635 Service Nameplate	1
	10	06-82-6350 M3.0 x 16mm Pan Hd. ST T-10 Screw	8
	11	31-44-2900 Handle Housing Assembly	1
	11a	----- Handle Halve - Right (Cover)	1
	11b	----- Handle Halve - Left (Support)	1
	12	42-70-0095 Belt Clip	1
	13	06-81-4205 6-32 x .75" Pan Hd. Phillips Machine Screw	1
	15	40-50-1090 Compression Spring	1
	16	23-66-6000 Electronics Assembly (Includes On-Off Switch, PCBA and Terminal Connector Block)	1
	17	42-42-0515 Lock-Off Shuttle	1
	21	48-55-3490 Contractors Bag	1

NOTE: See page two of this bulletin for service details relating to the Shear Head Assembly, No. 48-08-0507

- FIG. NOTES:**
- 1b,6a To remove the eccentric assembly (1b) from the output shaft of the gearcase (6a) a 1/4" open end wrench should be used to secure the end of the shaft. Use a thin walled 7/8" wrench to tighten/loosen the eccentric.
 - 2,3,4 When replacing Rotational Collar (3), remove 'C' Retaining Ring (2). Pull back Release Lever (4) while turning Rotational Collar (3) 90° in either direction, lining up the lugs in the Rotational Collar with the slots on the front of the Gearbox.
 - 3,4,5,6a Place a light film of Type 'E' Grease, No. 49-08-4122 to the inside diameter of the Rotational Collar (3), to the front neck of Gearbox (6a), to the underside of the Release Lever (4) and the two Release Lever Springs (5).
 - 6,7,7b Service replacement gearcase assembly (6) comes with a motor mount plate (7b) that must be removed and discarded when servicing. A motor mount plate already exists on the motor assembly (7).