



SERVICE PARTS LIST

BULLETIN NO.
54-26-2531

SPECIFY CATALOG NO. AND SERIAL NO. WHEN ORDERING PARTS		REVISED BULLETIN 54-26-2530	DATE July 2016
M18™ 1/2" Square Impact Wrench			
CATALOG NO.	2659-20	STARTING SERIAL NO.	F50B
			WIRING INSTRUCTION SEE PAGE 3

EXAMPLE:
00 0 Component Parts (Small #) Are Included
When Ordering The Assembly (Large #).

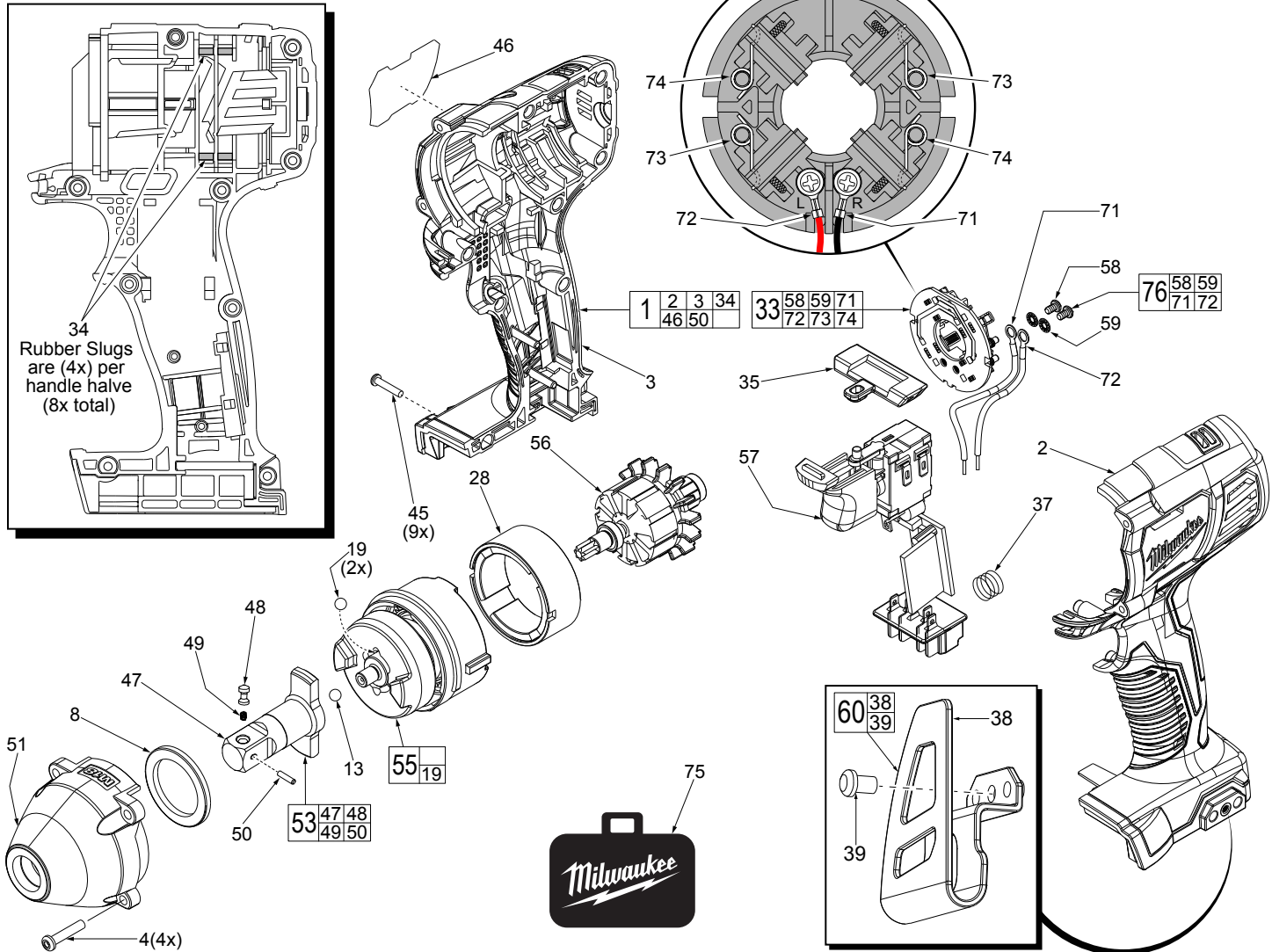


FIG.	PART NO.	DESCRIPTION OF PART	NO. REQ.	FIG.	PART NO.	DESCRIPTION OF PART	NO. REQ.
1	31-44-1040	Housing Assembly	1	55	14-30-0115	Gearbox Assembly	1
2	-----	Left Housing Halve	1	56	16-01-3010	Service Armature Assembly	1
3	-----	Right Handle Halve	1	57	23-66-2659	Electronics Assembly Consisting of On-Off Switch, PCBA, Battery Connector Block and LED	1
4	05-88-0400	M4 x 20mm Pan Hd. T-20 Screw	4	58	05-88-0926	M3 x 5mm Pan Hd. T-10 Screw	2
8	45-88-1317	Plastic Washer	1	59	45-88-1980	Spring Washer	2
13	02-02-1300	M5 Steel Ball	1	60	42-70-2653	Belt Clip Assembly	1
19	02-02-0180	4.7mm Steel Ball	2	71	-----	Leadwire Assembly - Black - Right Side	1
28	18-01-3010	Service Field	1	72	-----	Leadwire Assembly - Red - Left Side	1
33	22-22-2657	Brush Card Assembly	1	73	-----	Brush Spring - Right	2
34	45-30-0250	Rubber Slug	8	74	-----	Brush Spring - Left	2
35	45-24-2657	Forward / Reverse Shuttle	1	75	42-55-2762	Carrying Case	1
37	40-50-1090	Terminal Block Spring	1	76	14-46-2394	Leadwire/Screw/Washer Kit	1
38	-----	Belt Clip	1	77	10-20-1126	Warning Label (Not Shown)	1
39	06-82-0130	6-32 x 5/16" Pan Hd. T-15 Mach. Screw	1				
45	06-82-6350	M3 x 16mm Pan Hd. ST T-10 Screw	9				
46	12-20-2622	Service Nameplate	1				
47	-----	1/2" Square Anvil with Needle Bearing	1				
48	44-60-0515	Detent Pin	1				
49	40-50-0925	Spring	1				
50	06-65-0150	Roller Pin	1				
51	28-50-0060	Front Gearcase with Bushing	1				
53	42-06-0105	1/2" Square Anvil Assembly with Bearing	1				