



# SERVICE PARTS LIST

**BULLETIN NO.**  
**54-26-2040**

**SPECIFY CATALOG NO. AND SERIAL NO. WHEN ORDERING PARTS**  
**M18™ Right Angle 3/8" Square Impact Wrench**  
**CATALOG NO. 2668-20**    **STARTING SERIAL NO. G11A or G11B**

REVISED BULLETIN    DATE  
 \_\_\_\_\_    Feb. 2017  
 WIRING INSTRUCTION  
**See Page 2**

**EXAMPLE:**  
 Component Parts (Small #)  
 Are Included When Ordering  
 The Assembly (Large #).

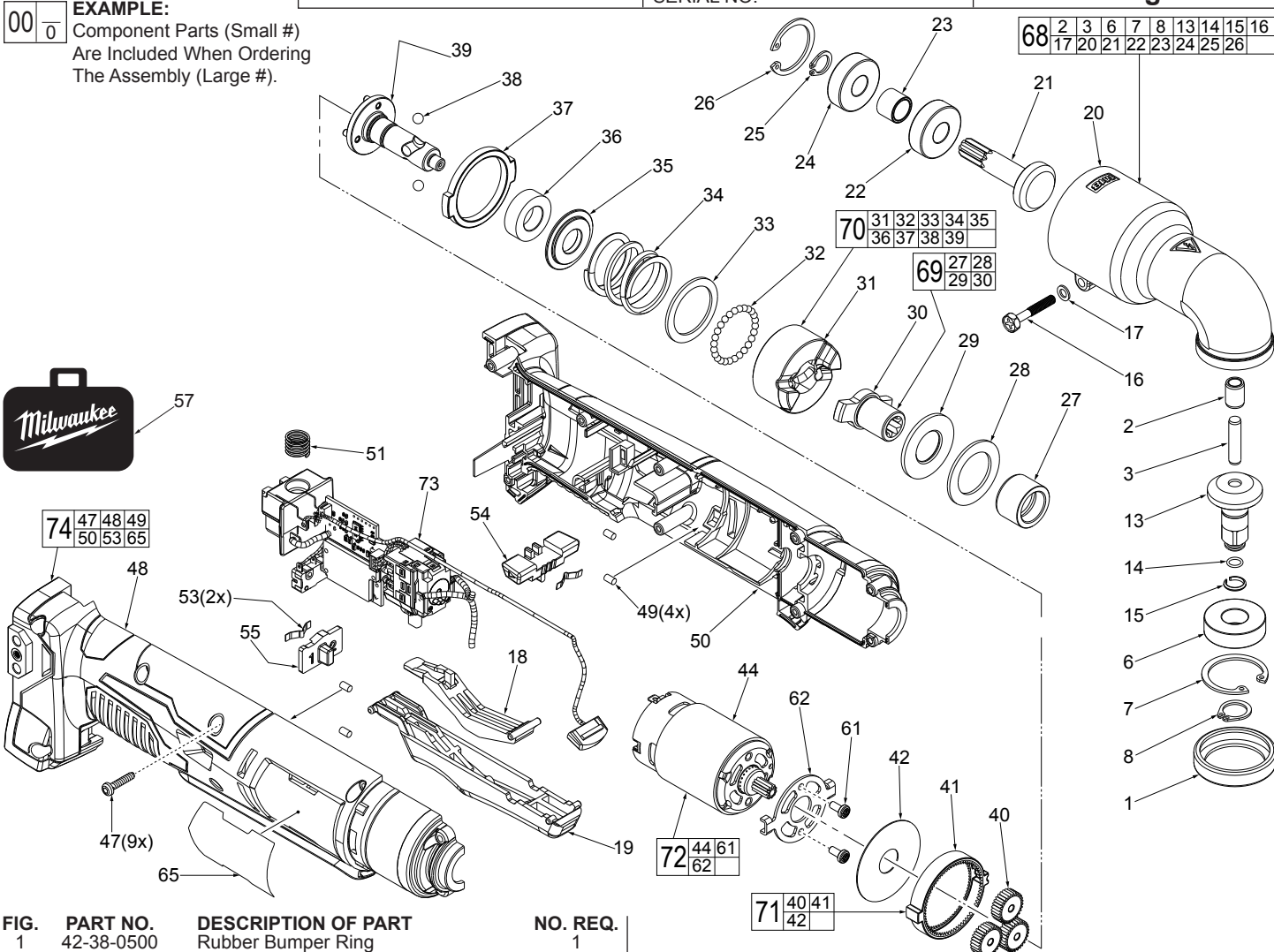


FIG.	PART NO.	DESCRIPTION OF PART	NO. REQ.
1	42-38-0500	Rubber Bumper Ring	1
2	-----	Bushing	1
3	-----	Pin	1
6	-----	Ball Bearing	1
7	-----	Retaining Ring	1
8	-----	Retaining Ring	1
13	-----	3/8" Square Bevel Gear	1
14	34-40-1885	O-Ring	1
15	44-90-1050	Friction Ring	1
16	06-82-3110	M4 x 1" Hex Hd. Phillips Screw	1
17	05-90-0225	Spring Washer	1
18	44-10-0052	Multiplier	1
19	31-92-0315	Paddle	1
20	-----	Gearcase	1
21	-----	Bevel Pinion	1
22	-----	Ball Bearing	1
23	-----	Sleeve	1
24	-----	Ball Bearing	1
25	-----	Retaining Ring	1
26	-----	Retaining Ring	1
27	-----	Anvil Bushing	1
28	-----	Washer	1
29	-----	Nylon Ring	1
30	-----	Anvil	1
31	-----	Hammer	1
32	-----	3.0mm Steel Ball	27
33	-----	Washer	1
34	-----	Hammer Spring	1
35	-----	Step Washer	1
36	-----	Ball Bearing	1
37	-----	Support Ring	1
38	-----	3/16" Steel Ball	2
39	-----	Cam Shaft	1
40	-----	Planet Gear	3
41	-----	Ring Gear	1

FIG.	PART NO.	DESCRIPTION OF PART	NO. REQ.
42	-----	Planetary Gear Washer	1
44	-----	Motor with Pinion	1
47	06-82-1080	M13 x 14mm Pan Hd. Plast. T-10 Screw	9
48	-----	Handle Halve - Right	1
49	45-30-2653	Rubber Slug	4
50	-----	Handle Halve - Left	1
51	40-50-1090	Terminal Block Spring	1
53	40-50-0027	Spring Plate	2
54	42-42-0083	Forward/Reverse Shuttle	1
55	44-10-1005	Two Speed Shuttle	1
57	42-55-2667	Blow Molded Carrying case	1
61	05-88-0926	M3 x 5mm Pan Hd. Screw	2
62	-----	Motor Mount Plate	1
65	12-20-2667	Service Nameplate	1
68	28-14-2668	3/8" Square Gearcase Assembly	1
69	42-06-1037	Anvil Assembly	1
70	43-81-0200	Hammer Assembly	1
71	14-29-1005	Planetary Gear Assembly	1
72	23-30-1040	Motor Assembly	1
73	23-66-2667	Electronics Assembly Consisting of: Switch, PCBA, LED and Terminal Connector Block	1
74	31-44-2667	Handle Halve Assembly	1