



SERVICE PARTS LIST

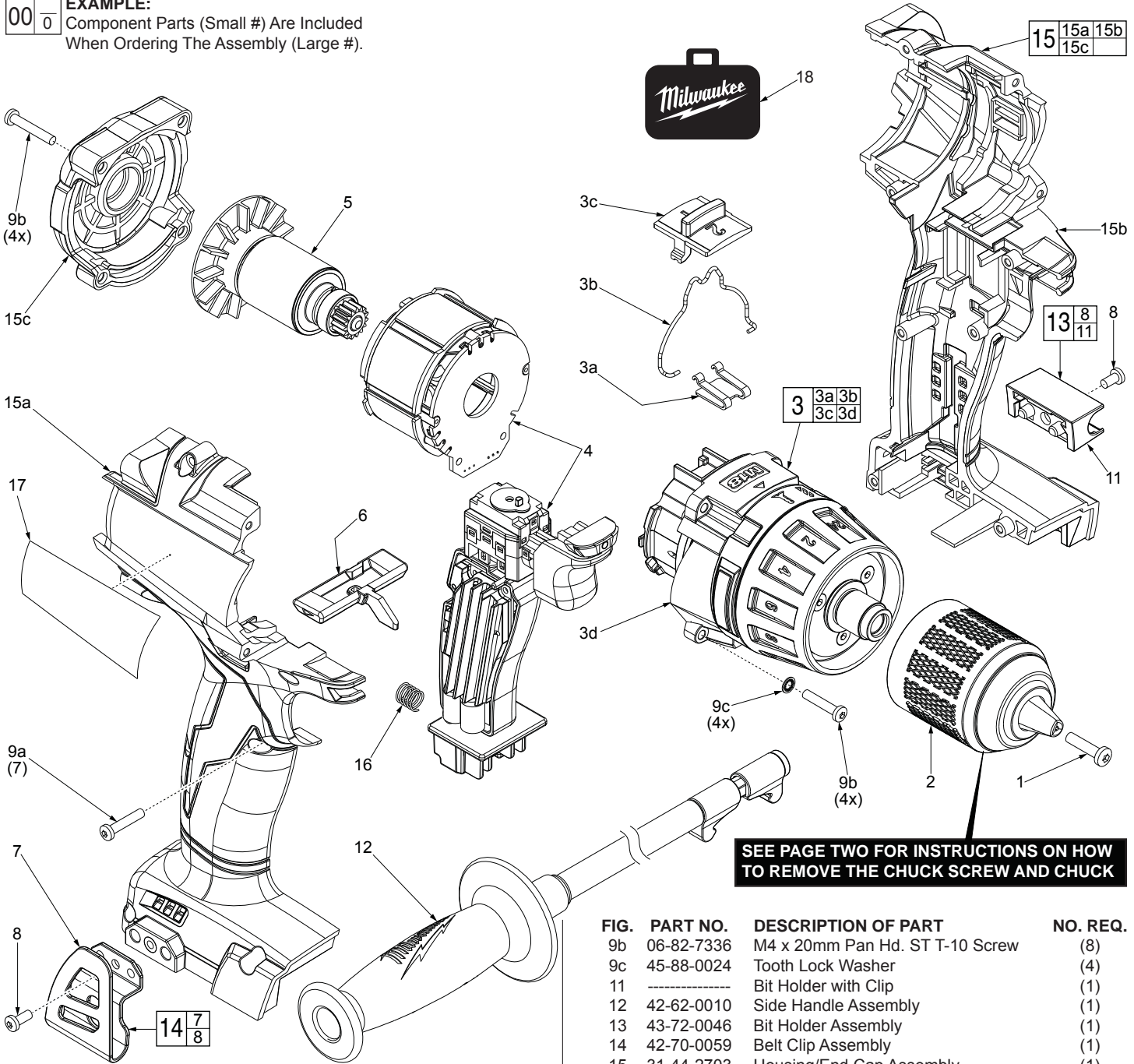
BULLETIN NO.
54-06-2740

| | | | |
|--|---------------------------------|---|-----------|
| SPECIFY CATALOG NO. AND SERIAL NO. WHEN ORDERING PARTS | | REVISED BULLETIN | DATE |
| M18™ FUEL™ Drill-Driver | | | Nov. 2015 |
| CATALOG NO. 2703-20 | STARTING SERIAL NO. G72A | WIRING INSTRUCTION SEE PAGE 2 | |

EXAMPLE:

| | |
|----|---|
| 00 | 0 |
|----|---|

 Component Parts (Small #) Are Included When Ordering The Assembly (Large #).



SEE PAGE TWO FOR INSTRUCTIONS ON HOW TO REMOVE THE CHUCK SCREW AND CHUCK

| FIG. | PART NO. | DESCRIPTION OF PART | NO. REQ. |
|------|------------|--|----------|
| 1 | 05-88-0019 | M8.0 x 1 LH T-40 Chuck Screw | (1) |
| 2 | 42-66-0090 | 1/2" Keyless Chuck | (1) |
| 3 | 14-29-0027 | Gearbox Assembly | (1) |
| 3a | 40-50-0021 | Detent Spring | (1) |
| 3b | 45-24-0012 | Speed Change Lever | (1) |
| 3c | 44-10-0014 | Speed Selector Slide | (1) |
| 3d | ----- | Gearbox | (1) |
| 4 | 14-20-0032 | Electronics Assembly Consists of: On-Off Switch, PCBA, Stator, LED Assembly, Battery Connector Block | (1) |
| 5 | 16-07-0041 | Rotor Assembly | (1) |
| 6 | 42-42-0052 | Forward/Reverse Shuttle | (1) |
| 7 | ----- | Belt Clip | (1) |
| 8 | 06-82-5275 | 6-32 x 5/16" Pan Hd. Taprite T-15 Screw | (2) |
| 9a | 06-82-6350 | M3 x 16mm Pan Hd. ST T-10 Screw | (7) |

| FIG. | PART NO. | DESCRIPTION OF PART | NO. REQ. |
|------|------------|---------------------------------|----------|
| 9b | 06-82-7336 | M4 x 20mm Pan Hd. ST T-10 Screw | (8) |
| 9c | 45-88-0024 | Tooth Lock Washer | (4) |
| 11 | ----- | Bit Holder with Clip | (1) |
| 12 | 42-62-0010 | Side Handle Assembly | (1) |
| 13 | 43-72-0046 | Bit Holder Assembly | (1) |
| 14 | 42-70-0059 | Belt Clip Assembly | (1) |
| 15 | 31-44-2703 | Housing/End Cap Assembly | (1) |
| 15a | ----- | Right Housing Halve | (1) |
| 15b | ----- | Left Housing Halve | (1) |
| 15c | ----- | End Cap | (1) |
| 16 | 40-50-1090 | Compression Spring | (1) |
| 17 | 12-20-0048 | Service Nameplate | (1) |
| 18 | 42-55-2703 | Blow Molded Carrying Case | (1) |