



# SERVICE PARTS LIST

**BULLETIN NO.**  
**54-24-2770**

SPECIFY CATALOG NO. AND SERIAL NO. WHEN ORDERING PARTS		REVISED BULLETIN	DATE
<b>M18™ FUEL™ 1" (2Kg) SDS Plus D-Handle Rotary Hammer</b>			Aug. 2016
CATALOG NO.	<b>2713-20</b>	WIRING INSTRUCTION	
STARTING SERIAL NO.	<b>H19A</b>	<b>SEE PAGE 6</b>	

**EXAMPLE:**  
00 0 Component Parts (Small #) Are Included When Ordering The Assembly (Large #).

● = Components of the 14-46-2712 Rotary Hammer Service Kit (See page six for a complete listing)

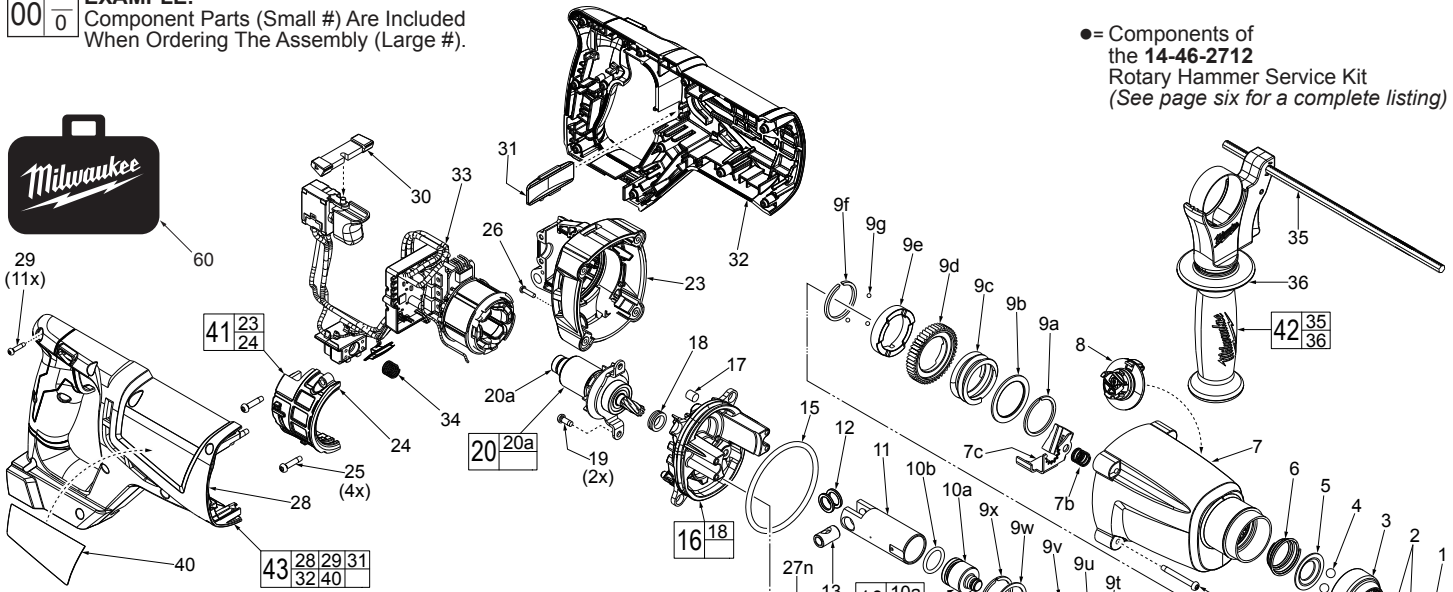


FIG.	PART NO.	DESCRIPTION OF PART	NO. REQ.
1	42-52-5262	● Dust Cap	1
2	44-90-0014	● C-Ring	2
3	42-76-5264	● Chuck Sleeve Assembly	1
4	02-02-0275	7mm Steel Ball	2
5	42-36-0191	Ball Plate	1
6	40-50-5262	Conical Spring	1
7	31-40-0602	Gearcase Assembly with Bearings and Seal	1
7b	40-50-0870	Spring	1
7c	44-90-1011	Locking Plate	1
8	44-10-5263	Shift Lever with O-Ring	1
9	45-22-0851	Spindle Sleeve Assembly	1
9a	44-90-0215	C-Ring	1
9b	45-88-2115	Washer	1
9c	40-50-1720	Clutch Spring	1
9d	32-75-1831	2nd Stage Gear	1
9e	42-70-0781	Clutch Plate	1
9f	44-90-0216	C-Ring	1
9g	02-02-1230	Steel Ball	3
9h	38-50-0776	Spindle	1
9j	45-88-2100	Stop Washer	1
9k	34-40-1410	● O-Ring	1
9m	45-08-0650	Striker (Anvil)	1
9n	34-40-1425	● O-Ring	1
9p	45-22-0870	Sleeve (Ram Catcher)	1
9q	34-40-1440	● O-Ring	1
9r	34-40-1450	● O-Ring	1
9s	42-76-1001	Washer	1
9t	44-90-1026	● C-Ring	1
9u	02-80-1751	Spindle Bearing	1
9v	42-36-2191	Bearing Bar Mounting Bracket	1
9w	45-88-5231	Washer	1
9x	44-90-1031	Spiral Retaining Ring	1
10	45-56-0037	Striker and O-Ring Assembly	1
10a	-----	Striker (Ram)	1
10b	34-40-1511	● O-Ring	1
11	44-62-5263	Piston	1
12	45-88-5200	● Washer	2
13	44-60-5262	Wrist Pin	1
14	05-81-1337	M4 x 14mm Pan Hd. Taptite Screw	4
15	43-44-1375	● Gasket	1
16	31-15-0302	Crankcase Assembly	1
17	43-84-0300	● Felt Plug	1
18	43-44-1376	Oil Shield	1
19	05-78-0105	M4 x 10mm Pan Hd. Taptite T-20 Screw	2
20	16-07-2713	Rotor Assembly	1
20a	02-04-0033	Ball Bearing	1
22	06-81-5383	M4 x 35mm Pan Hd. Plastite T-20 Screw	4
23	-----	Motor Housing Support - Left	1

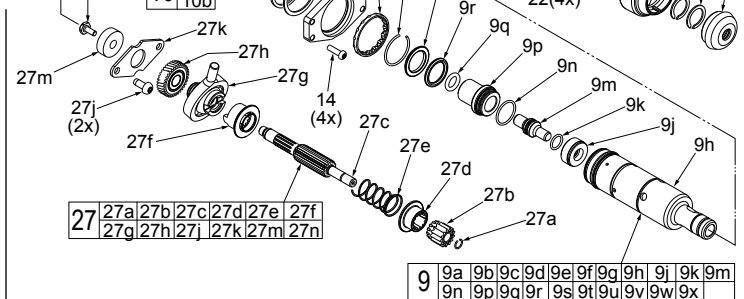


FIG.	PART NO.	DESCRIPTION OF PART	NO. REQ.
24	-----	Motor Housing Cover - Right	1
25	06-82-3006	M4 x 18mm Pan Hd. T-20 Screw	4
26	05-81-0530	Ground Wire Screw	1
27	14-73-1603	Wobble Shaft Assembly	1
27a	44-90-1180	C-Ring	1
27b	32-60-1611	Pinion	1
27c	36-66-1621	Reduction Gear Shaft	1
27d	45-22-0927	Coupling	1
27e	40-50-2141	Spring	1
27f	45-22-0926	Coupling Sleeve	1
27g	36-92-0800	Wobble Plate	1
27h	32-05-0055	Reduction Gear	1
27j	05-74-1030	M5 x 8mm Pan Hd. Tapt. T-25 Screw	2
27k	44-66-0022	Retaining Plate	1
27m	02-04-0005	Ball Bearing	1
27n	06-82-0017	● M4 x 10mm Hex Head Screw	1
28	-----	D-Handle Housing Cover	1
29	06-82-1080	M3 x 14mm Pan Hd. Plastite T-10 Screw	11
30	45-24-1022	Forward / Reverse Shuttle	1
31	-----	FUEL™ Housing Plate	1
32	-----	D-Handle Housing Support	1
33	14-20-2713	Electronics Assembly	1
34	40-50-1090	Terminal Spring	1
35	44-94-5381	Depth Gauge	1
36	14-34-0650	Auxiliary Side Handle	1
40	12-20-2713	Service Nameplate	1
41	31-50-2713	Motor Housing Assembly	1
42	14-46-1450	Side Handle Assembly	1
43	31-44-2713	D-Handle Housing Assembly	1
60	42-55-2713	Blow Molded Carrying Case	1
	14-46-2712	Rotary Hammer Service Kit (See page 6)	1