

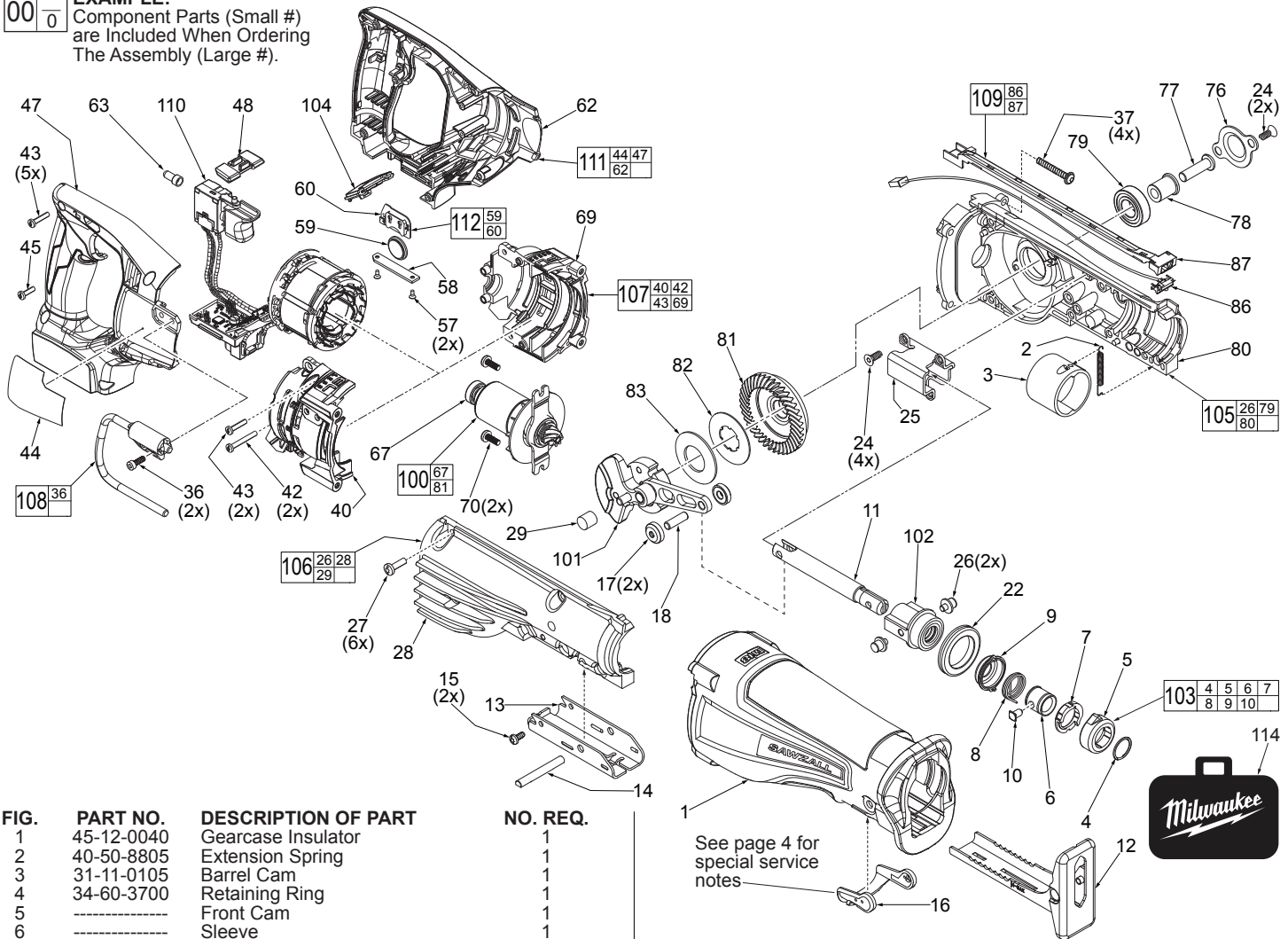


# SERVICE PARTS LIST

**BULLETIN NO.**  
**54-40-2720**

SPECIFY CATALOG NO. AND SERIAL NO. WHEN ORDERING PARTS		REVISED BULLETIN	DATE
<b>M18 FUEL ONE KEY SAWZALL® Reciprocating Saw</b>			Feb. 2017
CATALOG NO.	<b>2721-20</b>	STARTING SERIAL NO.	<b>H31A</b>
		WIRING INSTRUCTION <b>SEE PAGE 5</b>	

**EXAMPLE:**  
Component Parts (Small #) are Included When Ordering The Assembly (Large #).



See page 4 for special service notes

FIG.	PART NO.	DESCRIPTION OF PART	NO. REQ.
1	45-12-0040	Gearcase Insulator	1
2	40-50-8805	Extension Spring	1
3	31-11-0105	Barrel Cam	1
4	34-60-3700	Retaining Ring	1
5	-----	Front Cam	1
6	-----	Sleeve	1
7	-----	Rear Cam	1
8	-----	Torsion Spring	1
9	-----	Spring Cover	1
10	-----	Lock Pin	1
11	38-50-0076	Spindle	1
12	45-16-0135	Shoe Assembly	1
13	44-86-0225	Shoe Retainer	1
14	44-60-1635	Shoe Pin	1
15	06-82-7253	8-32 x 3/8" Pan Hd. Taptite T-20 Screw	2
16	31-15-2015	Shoe Release Lever	1
17	42-40-2052	Rollers	2
18	06-65-0145	Pin - Connecting Rod	1
22	45-06-0230	'H' Seal	1
24	06-82-8890	1/2-DG50 Thread Form T-25 Screw	6
25	43-56-0045	Orbit Slot	1
26	06-65-0135	Pivot Pin	2
27	06-82-5411	10-24 x 0.625 Pan Hd. Taptite T-25 Scr.	6
28	-----	Gearcase Halve - Right	1
29	02-50-1640	Needle Bearing	1
36	05-78-0910	M4 x 12mm Fillister Hd. Screw	2
37	05-88-8309	M5 x 35mm Pan Hd. Taptite T-20 Screw	4
40	-----	Motor Cage - Right	1
42	06-82-7290	6-19 x 1-1/8" Pan Hd. Plast. T-15 Scr.	2
43	06-82-7261	6-19 x 11/16" Pan Hd. Plast. T-15 Scr.	7
44	12-20-0078	Service Nameplate	1
45	06-82-7240	6-19 x 1/2" Pan Hd. Plast. T-15 Screw	1
47	-----	Handle Halve - Right	1
48	42-42-0195	Lockoff Shuttle	1
57	05-81-1100	M2.6 x 6mm Flat Head Phillips Screw	2
58	31-15-0013	Coin Cell Cover	1
59	50-11-0020	3V Coin Cell Battery (CR 2032)	1
60	-----	Bluetooth PCBA	1
62	-----	Handle Halve - Left	1

FIG.	PART NO.	DESCRIPTION OF PART	NO. REQ.
63	22-56-0150	Closed End Connector	1
66	23-94-0082	High Voltage Wire (See page 5)	1
67	02-04-0645	Ball Bearing	1
69	-----	Motor Cage - Left	1
70	06-82-5324	10-24 x 1/2" Pan Hd. Tapt. T-25 Screw	2
76	44-66-0280	Bearing Retaining Plate	1
77	06-08-0017	Drive Hub Bolt (Left Hand Thread)	1
78	42-40-0076	Spacer	1
79	02-04-1516	Ball Bearing	1
80	-----	Gearcase Halve - Left (w/ locating pins)	1
81	-----	Bevel Gear	1
82	43-06-0025	Metal Plate	1
83	40-50-0595	Disc Spring	1
100	14-50-0515	Rotor Assembly	1
101	14-09-1000	Crankshaft Assembly	1
102	14-86-0105	Front Bushing Assembly	1
103	14-46-1064	Quik-Lok® Blade Clamp Kit	1
104	45-24-0062	Speed Selector Assembly	1
105	14-30-0185	Gearcase Halve - Left Assembly	1
106	14-30-0180	Gearcase Halve - Right Assembly	1
107	14-50-0215	Motor Cage Assembly	1
108	14-36-0340	Rafter Hook Assembly	1
109	22-09-2600	LED and Tray Assembly	1
110	14-20-0057	Electronics Assembly	1
111	14-34-0016	Handle Halve Assembly	1
112	22-09-2757	Bluetooth PCBA with Battery	1
114	42-55-2720	Carrying Case	1