



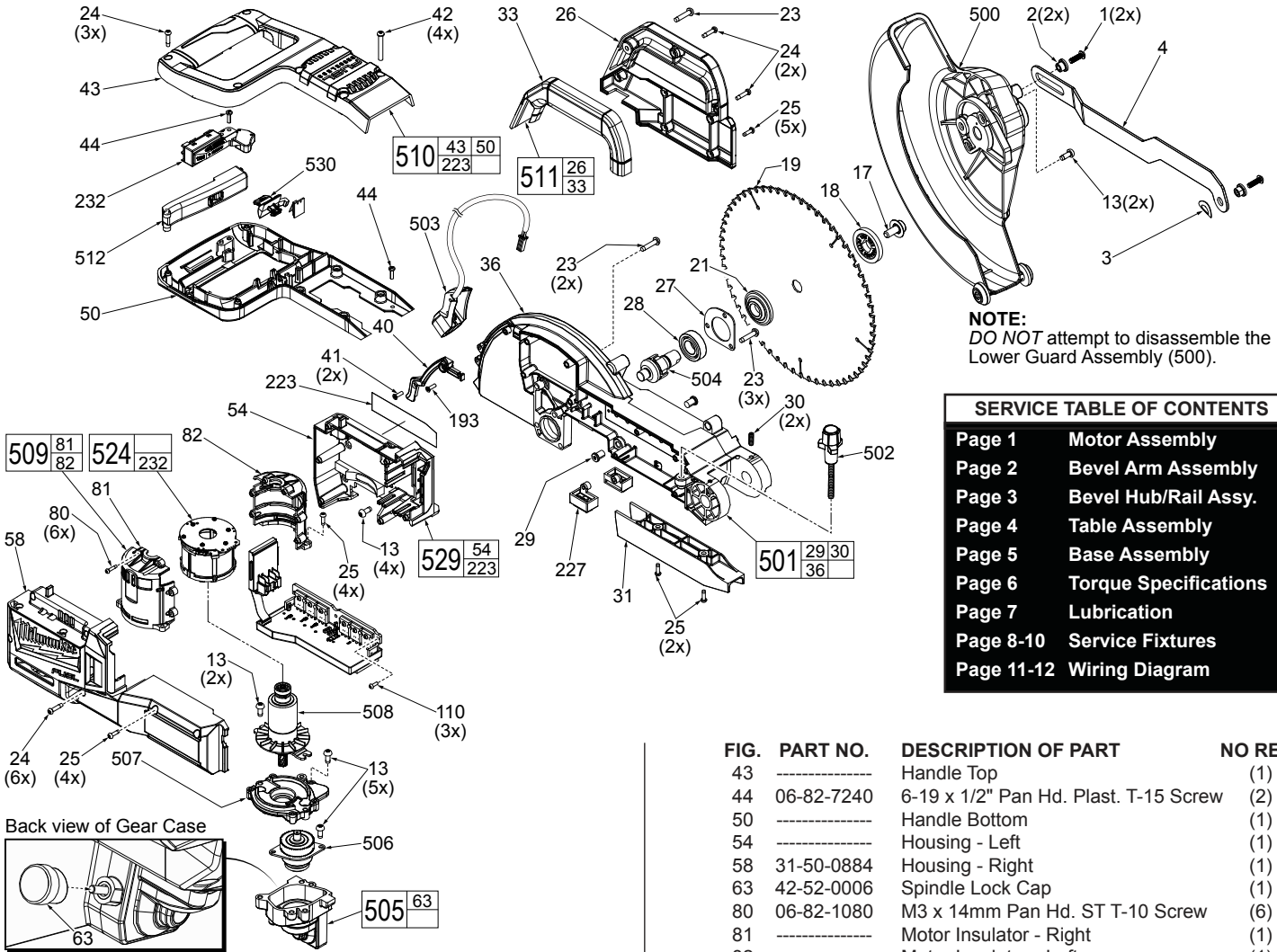
SERVICE PARTS LIST

MOTOR ASSEMBLY

BULLETIN NO.
54-40-2730

SPECIFY CATALOG NO. AND SERIAL NO. WHEN ORDERING PARTS		REVISED BULLETIN	DATE
M18™ FUEL™ 10" MITER SAW			Nov. 2016
CATALOG NO.	2734-20	SERIAL NUMBER	H17A
WIRING INSTRUCTION			

EXAMPLE:
Component Parts (Small #) Are Included
When Ordering The Assembly (Large #).



NOTE:
DO NOT attempt to disassemble the
Lower Guard Assembly (500).

SERVICE TABLE OF CONTENTS	
Page 1	Motor Assembly
Page 2	Bevel Arm Assembly
Page 3	Bevel Hub/Rail Assy.
Page 4	Table Assembly
Page 5	Base Assembly
Page 6	Torque Specifications
Page 7	Lubrication
Page 8-10	Service Fixtures
Page 11-12	Wiring Diagram

FIG.	PART NO.	DESCRIPTION OF PART	NO REQ.
1	05-81-0156	M5 x 16mm Pan Hd. T-25 Mach. Screw	(2)
2	42-40-0936	Bushing	(2)
3	40-50-3946	Wave Washer	(1)
4	44-14-0017	Guard Link Arm	(1)
13	05-74-1030	M5 x 12mm Pan Hd. Tapt. T-25 Screw	(13)
17	45-04-0410	LH Blade Screw-6mm Hex Socket	(1)
18	43-34-0810	Outer Flange	(1)
19	-----	10" Blade	(1)
21	43-34-0815	Inner Flange	(1)
23	06-82-0028	M5 x 23mm Pan Hd. Tapt. T-25 Screw	(6)
24	06-82-0033	M4 x 18mm Pan Hd. ST T-20 Screw	(11)
25	05-78-0011	M3.5 x 12mm Pan Hd. Tapt. T-20 Screw	(15)
26	-----	Carrying Handle Side Plate	(1)
27	44-66-0031	Bearing Retaining Plate	(1)
28	02-04-1700	Ball Bearing	(1)
29	43-56-0810	M8 x 11mm T-25 Blade Deflector	(2)
30	05-89-0526	M5 x 16mm Set Screw with Nylok	(2)
31	43-56-0815	Chip Deflector	(1)
33	-----	Carrying Handle Cover	(1)
36	-----	Motor Arm	(1)
40	31-15-0014	LED Lead Cover	(1)
41	06-82-0034	M3.5 x 12mm Flat Hd. T-15 Screw	(2)
42	06-82-0042	M5 x 35mm Pan Hd. PT T-20 Screw	(4)

FIG.	PART NO.	DESCRIPTION OF PART	NO REQ.
43	-----	Handle Top	(1)
44	06-82-7240	6-19 x 1/2" Pan Hd. Plast. T-15 Screw	(2)
50	-----	Handle Bottom	(1)
54	-----	Housing - Left	(1)
58	31-50-0884	Housing - Right	(1)
63	42-52-0006	Spindle Lock Cap	(1)
80	06-82-1080	M3 x 14mm Pan Hd. ST T-10 Screw	(6)
81	-----	Motor Insulator - Right	(1)
82	-----	Motor Insulator - Left	(1)
110	05-81-0035	M3 x 8mm Pan Hd. T-10 Mach. Screw	(3)
193	05-74-0740	M3.5 x 8mm Pan Hd. T-15 Mach. Screw	(1)
223	12-20-0082	Service Nameplate	(1)
227	44-06-0023	Cover Block	(2)
232	23-66-0036	On-Off Switch	(1)
500	14-32-0245	Lower Guard Assembly	(1)
501	14-38-0543	Motor Arm Assembly	(1)
502	14-46-0058	Dado Screw Assembly	(1)
503	14-46-0059	Shadow Line Assembly	(1)
504	38-50-0016	Spindle Assembly	(1)
505	14-30-0024	Gearcase Assembly	(1)
506	14-29-0058	Intermediate Gear Assembly	(1)
507	14-13-0065	Diaphragm Assy. with Needle Bearing & Pins	(1)
508	16-07-0033	Rotor Assembly	(1)
509	31-50-0041	Motor Insulator Assembly	(1)
510	31-44-0098	Main Handle Kit	(1)
511	31-44-0099	Carrying Handle Kit	(1)
512	31-92-0215	Trigger Paddle	(1)
524	14-20-0058	Electronics Assembly	(1)
529	14-38-0544	Left Housing Kit with Label	(1)
530	31-01-0006	LED Button Assembly	(1)



SERVICE PARTS LIST

BEVEL ARM ASSEMBLY

BULLETIN NO.

54-40-2730

SPECIFY CATALOG NO. AND SERIAL NO. WHEN ORDERING PARTS		REVISED BULLETIN	DATE
M18™ FUEL™ 10" MITER SAW			Nov. 2016
CATALOG NO.	2734-20	SERIAL NUMBER	H17A
WIRING INSTRUCTION			

00 **EXAMPLE:**
Component Parts (Small #)
Are Included When Ordering
The Assembly (Large #).

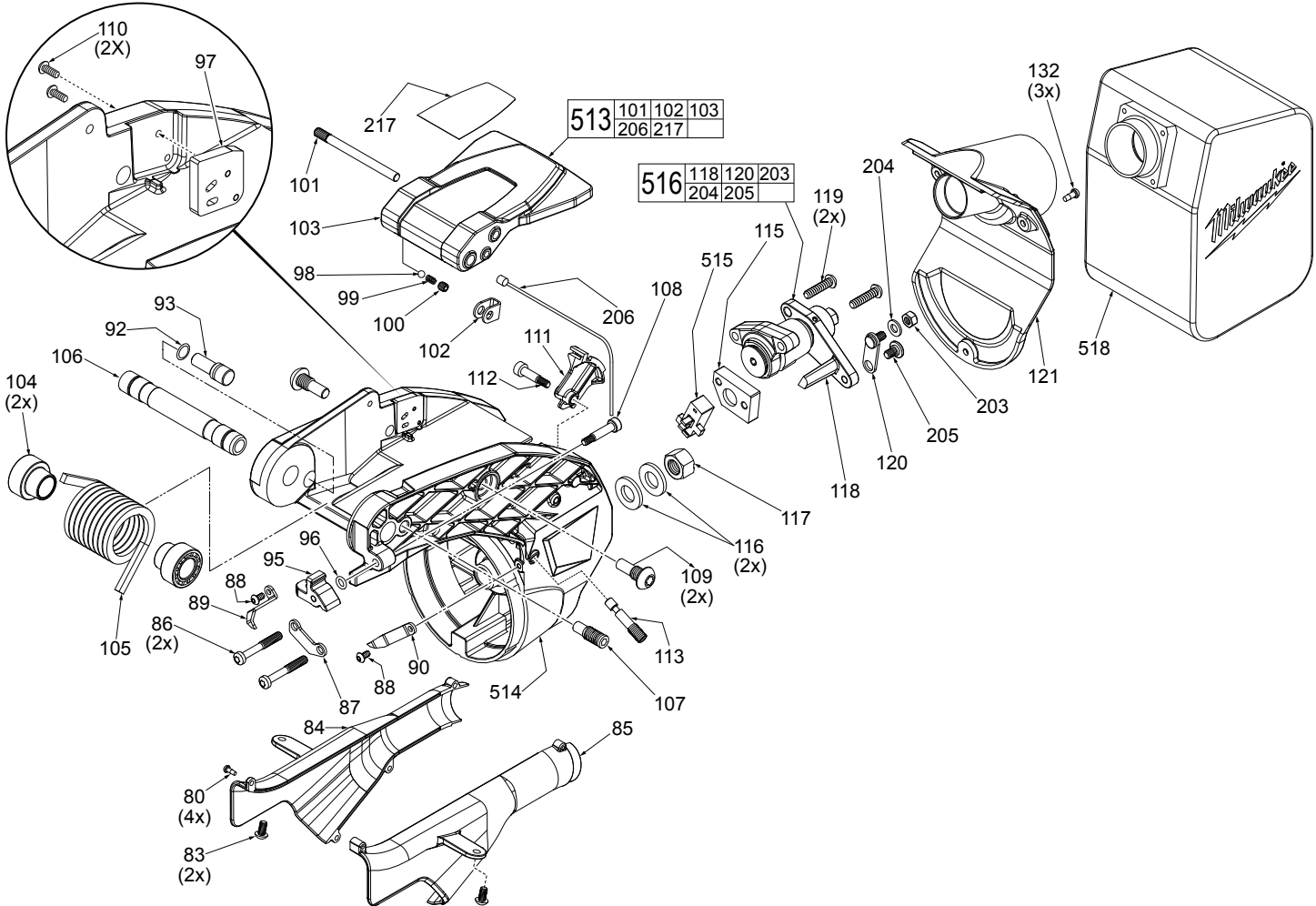


FIG.	PART NO.	DESCRIPTION OF PART	NO REQ.	FIG.	PART NO.	DESCRIPTION OF PART	NO REQ.
80	06-82-1080	M3 x 14mm Pan Hd. ST T-10 Screw	(4)	108	06-87-0020	Dado Stop Screw	(1)
83	05-81-0201	M5 x 10mm Pan Hd. T-25 Mach. Screw	(2)	109	05-77-0035	Handle Pivot Bolt	(2)
84	31-15-0018	Dust Chute - Left	(1)	110	05-81-0035	M3 x 8mm Pan Hd. T-10 Mach. Screw	(2)
85	31-15-0019	Dust Chute - Right	(1)	111	43-56-0335	Cable Guide	(1)
86	05-81-0139	M6 x 40mm Pan Hd. T-25 Screw	(2)	112	06-82-0037	M6 x 16mm Shoulder Screw	(1)
87	42-92-0059	Detent Mount Cover	(1)	113	45-04-0026	Detent Mount Adjustment Screw	(1)
88	06-82-0043	M4 x 8mm Pan Hd. T-20 Screw	(2)	115	42-68-0049	Detent Clamp Block	(1)
89	44-72-0030	Bevel Pointer - Left	(1)	116	45-88-1671	M12 Washer	(2)
90	44-72-0035	Bevel Scale Pointer - Right	(1)	117	05-59-0140	M12 Hex Nut	(1)
92	34-40-0251	O-Ring	(1)	118	14-04-0095	Brake Assembly	(1)
93	44-60-0003	Down Lock Pin	(1)	119	06-82-0038	M6 x 25mm Pan Hd. T-25 Mach. Screw	(2)
95	45-52-0040	Dado Stop	(1)	120	44-14-0145	Cable Brake Link Assembly	(1)
96	34-40-0056	O-Ring	(1)	121	31-15-0021	Rear Cover	(1)
97	44-66-0071	Handle Detent Plate	(1)	132	05-78-0746	M4 x 10mm Pan Hd. ST T-20 Screw	(3)
98	02-02-1300	Handle Detent Ball	(1)	203	05-55-0016	M6 Hex Nut	(1)
99	40-50-3941	Handle Detent Spring	(1)	204	45-88-0089	M6 Washer	(1)
100	05-86-0656	Set Screw	(1)	205	06-82-0067	M5 x 10mm Pan Hd. Hex Shoulder Scr.	(1)
101	06-65-0021	Handle Dowel Pin	(1)	206	23-94-0004	Brake Cable	(1)
102	45-98-0040	Cable Yoke	(1)	217	10-20-2236	Bevel Lock Label	(1)
103	-----	Bevel Handle	(1)	513	14-34-0026	Bevel Handle Assembly	(1)
104	42-40-0192	Pivot Spring Bushing	(2)	514	14-29-0059	Bevel Arm Assembly	(1)
105	40-50-0193	Axle Spring	(1)	515	14-67-0245	Bevel Detent Locator Assembly	(1)
106	42-12-0220	Bevel Axle	(1)	516	14-04-0025	Bevel Brake Assembly	(1)
107	05-89-0521	Screw Stop	(1)	518	42-16-0575	Dust Bag Assembly	(1)



SERVICE PARTS LIST

BEVEL HUB / RAIL ASSEMBLY

BULLETIN NO.

54-40-2730

SPECIFY CATALOG NO. AND SERIAL NO. WHEN ORDERING PARTS		REVISED BULLETIN	DATE
M18™ FUEL™ 10" MITER SAW			Nov. 2016
CATALOG NO.	2734-20	SERIAL NUMBER	H17A
WIRING INSTRUCTION			

00 **EXAMPLE:**
Component Parts (Small #)
Are Included When Ordering
The Assembly (Large #).

**Use this hole ONLY
to make Brake adjustments!**
Insert a 5mm ball end hex key through hole in bevel scale
area and engage pad adjuster on brake. Do not use a
standard hex key for this adjustment procedure.

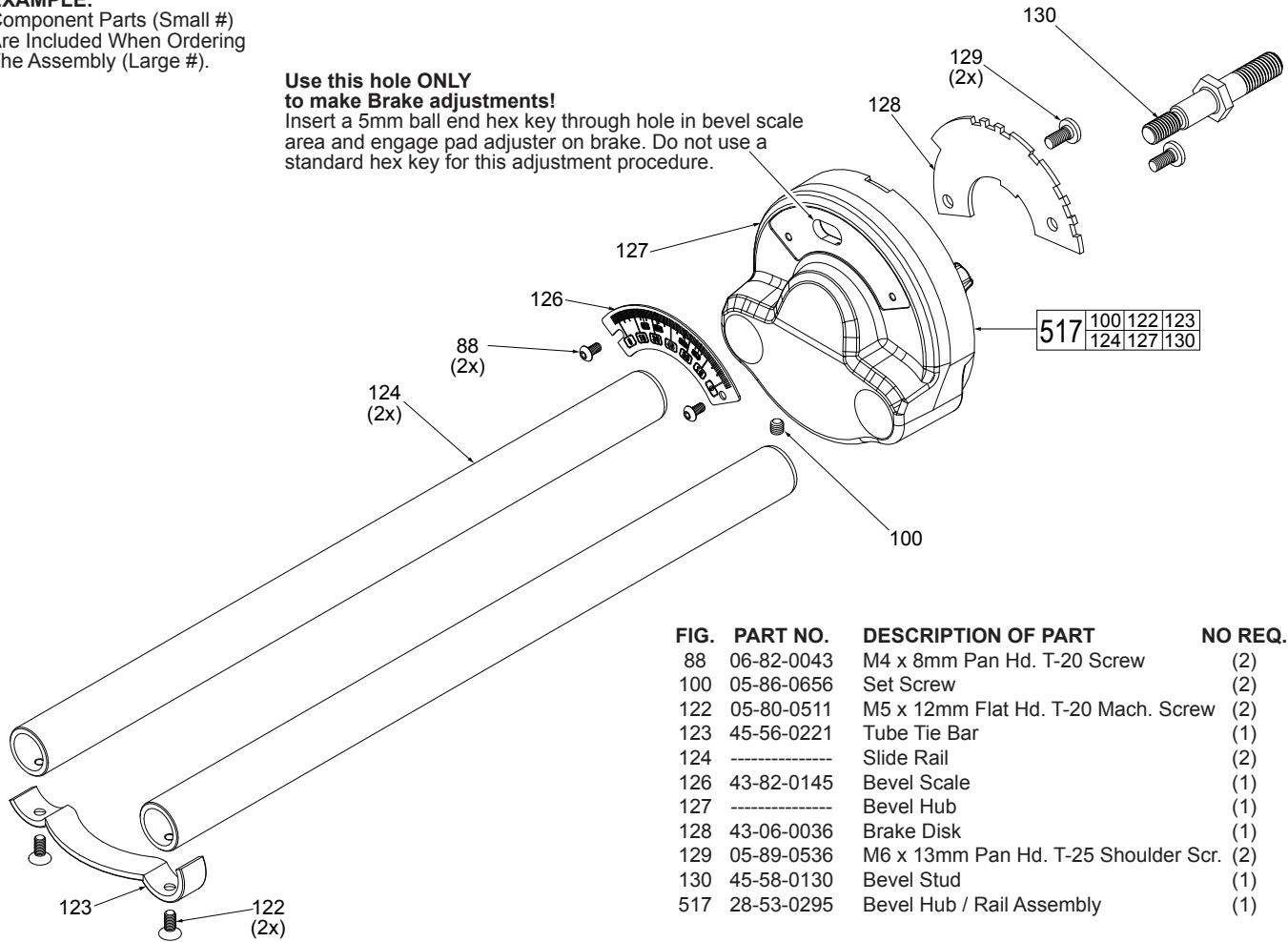


FIG.	PART NO.	DESCRIPTION OF PART	NO REQ.
	88	06-82-0043 M4 x 8mm Pan Hd. T-20 Screw	(2)
	100	05-86-0656 Set Screw	(2)
	122	05-80-0511 M5 x 12mm Flat Hd. T-20 Mach. Screw	(2)
	123	45-56-0221 Tube Tie Bar	(1)
	124	Slide Rail	(2)
	126	43-82-0145 Bevel Scale	(1)
	127	Bevel Hub	(1)
	128	43-06-0036 Brake Disk	(1)
	129	05-89-0536 M6 x 13mm Pan Hd. T-25 Shoulder Scr.	(2)
	130	45-58-0130 Bevel Stud	(1)
	517	28-53-0295 Bevel Hub / Rail Assembly	(1)



SERVICE PARTS LIST

BULLETIN NO.

54-40-2730

TABLE ASSEMBLY

SPECIFY CATALOG NO. AND SERIAL NO. WHEN ORDERING PARTS

REVISED BULLETIN

DATE

M18™ FUEL™ 10" MITER SAW

Nov. 2016

CATALOG NO. 2734-20

SERIAL NUMBER

H17A

WIRING INSTRUCTION

00 EXAMPLE:
Component Parts (Small #)
Are Included When Ordering
The Assembly (Large #).

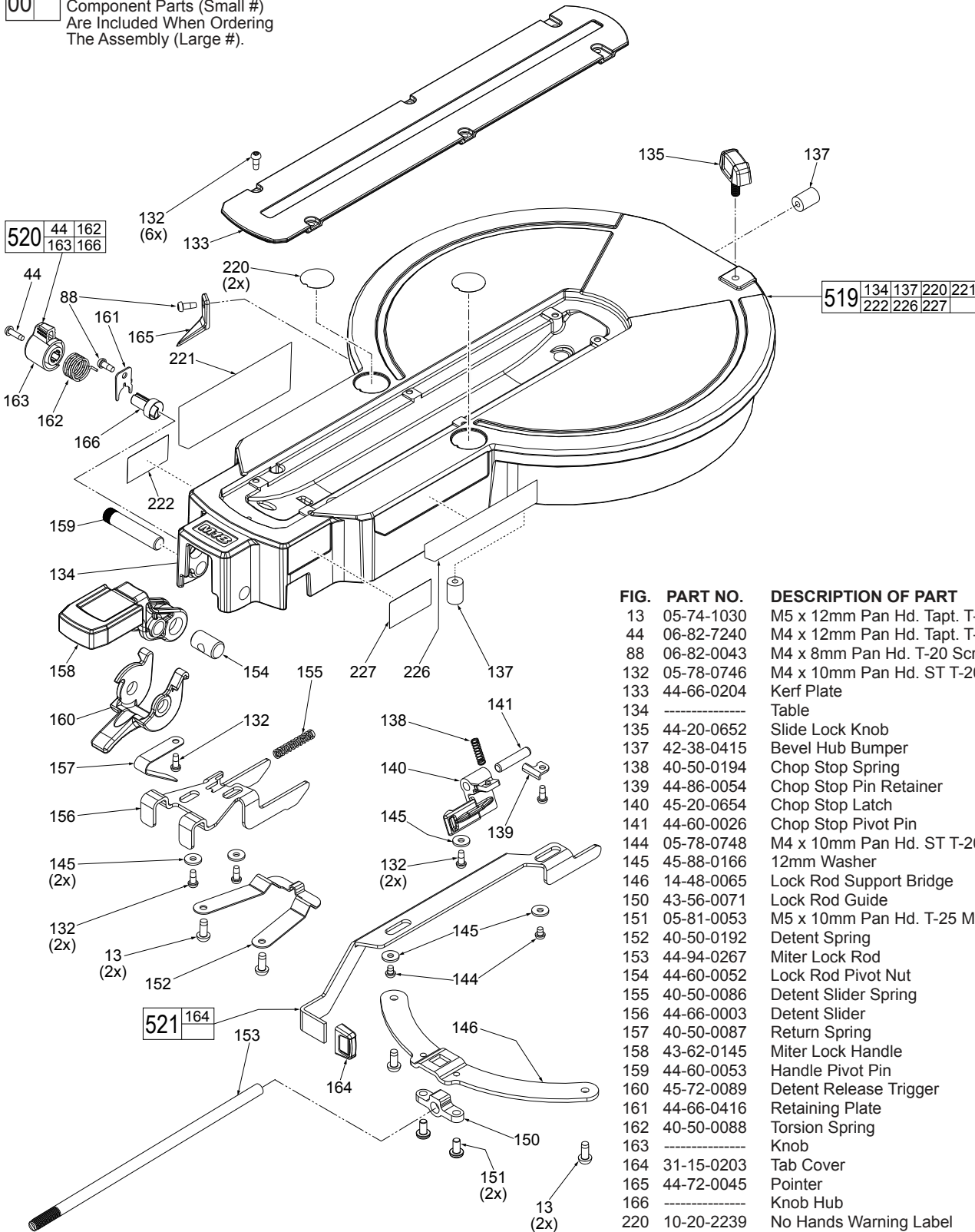


FIG.	PART NO.	DESCRIPTION OF PART	NO REQ.
	13	05-74-1030 M5 x 12mm Pan Hd. Tapt. T-25 Screw	(4)
	44	06-82-7240 M4 x 12mm Pan Hd. Tapt. T-20 Screw	(1)
	88	06-82-0043 M4 x 8mm Pan Hd. T-20 Screw	(2)
	132	05-78-0746 M4 x 10mm Pan Hd. ST T-20 Screw	(11)
	133	44-66-0204 Kerf Plate	(1)
	134	Table	(1)
	135	44-20-0652 Slide Lock Knob	(1)
	137	42-38-0415 Bevel Hub Bumper	(2)
	138	40-50-0194 Chop Stop Spring	(1)
	139	44-86-0054 Chop Stop Pin Retainer	(1)
	140	45-20-0654 Chop Stop Latch	(1)
	141	44-60-0026 Chop Stop Pivot Pin	(1)
	144	05-78-0748 M4 x 10mm Pan Hd. ST T-20 Screw	(2)
	145	45-88-0166 12mm Washer	(5)
	146	14-48-0065 Lock Rod Support Bridge	(1)
	150	43-56-0071 Lock Rod Guide	(1)
	151	05-81-0053 M5 x 10mm Pan Hd. T-25 Mach. Screw	(2)
	152	40-50-0192 Detent Spring	(1)
	153	44-94-0267 Miter Lock Rod	(1)
	154	44-60-0052 Lock Rod Pivot Nut	(1)
	155	40-50-0086 Detent Slider Spring	(1)
	156	44-66-0003 Detent Slider	(1)
	157	40-50-0087 Return Spring	(1)
	158	43-62-0145 Miter Lock Handle	(1)
	159	44-60-0053 Handle Pivot Pin	(1)
	160	45-72-0089 Detent Release Trigger	(1)
	161	44-66-0416 Retaining Plate	(1)
	162	40-50-0088 Torsion Spring	(1)
	163	Knob	(1)
	164	31-15-0203 Tab Cover	(1)
	165	44-72-0045 Pointer	(1)
	166	Knob Hub	(1)
	220	10-20-2239 No Hands Warning Label	(2)
	221	10-20-2241 Slide Warning Label	(1)
	222	10-20-2242 Tighten Adjustments Warning Label	(1)
	226	10-20-2243 Miter Detent Override Label	(1)
	227	10-20-2244 Chop Lock Label	(1)
	519	28-06-1065 Table Assembly	(1)
	520	44-20-0236 Miter Override Lock Assembly	(1)
	521	14-48-0092 Chop Stop Slider Assembly	(1)



SERVICE PARTS LIST

BASE ASSEMBLY

BULLETIN NO.
54-40-2730

SPECIFY CATALOG NO. AND SERIAL NO. WHEN ORDERING PARTS		REVISED BULLETIN	DATE
M18™ FUEL™ 10" MITER SAW			Nov. 2016
CATALOG NO.	2734-20	SERIAL NUMBER	H17A
		WIRING INSTRUCTION	

00 EXAMPLE:
Component Parts (Small #)
Are Included When Ordering
The Assembly (Large #).

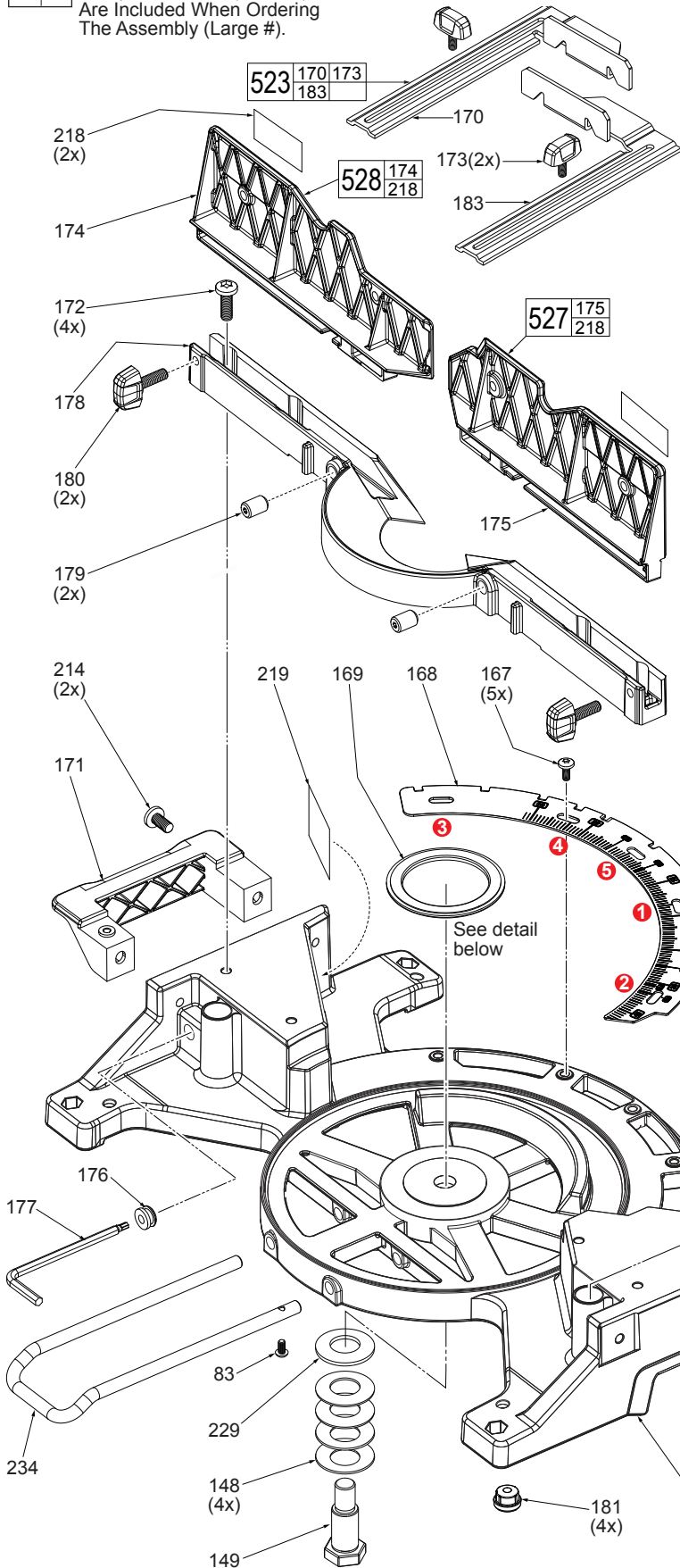


FIG.	PART NO.	DESCRIPTION OF PART	NO REQ.
83	05-81-0201	M5 x 10mm Pan Hd. T-25 Mach. Screw	(2)
148	40-50-8621	Belleville Spring Washer	(4)
149	45-08-0470	7/8" Table Bolt	(1)
167	05-89-0531	M5 x 13mm Pan Hd. T-25 Shoulder Scr.	(5)
168	42-92-1155	Detent Plate	(1)
169	02-80-0060	Thrust Bearing	(1)
170	-----	Crown Guide - Right	(1)
171	31-44-0096	Right Handle	(1)
172	05-81-0151	M8 x 25mm Pan Hd. T-45 Mach. Screw	(4)
173	06-82-0066	Vise Screw	(3)
174	-----	Right Sliding Fence	(1)
175	-----	Left Sliding Fence	(1)
176	22-90-0185	Wrench Grommet	(1)
177	49-96-0185	Wrench	(1)
178	28-35-0085	Fixed Fence	(1)
179	05-86-0600	M12 x 18mm T-25 Set Screw	(2)
180	43-98-0041	Fence Lock Knob	(2)
181	44-34-0017	Miter Base Foot	(4)
182	31-44-0097	Left Handle	(1)
183	-----	Crown Guide - Left	(1)
184	45-16-0105	Rubber Shoe	(1)
186	45-16-0115	Clamp Shoe	(1)
187	44-94-0268	Vise Rod	(1)
188	42-30-0355	Clamp Body	(1)
189	43-98-0043	Vise Knob	(1)
190	34-60-0004	Retaining Ring	(1)
191	-----	Base	(1)
214	06-82-0068	M8 x 16mm Pan Hd. T-25 Mach. Screw	(4)
218	10-20-2237	Fence Warning Label	(2)
219	10-20-2238	French/Spanish Warning Label	(1)
229	45-88-0091	Thick Washer	(1)
231	45-88-0109	Washer	(1)
234	44-94-0085	Kick Stand	(1)
522	28-06-1075	Base Assembly	(1)
523	43-98-0295	Crown Stop Kit	(1)
526	42-38-0084	Material Clamp Assy.	(1)
527	28-35-0090	Left Fence Assy.	(1)
528	28-35-0095	Right Fence Assy.	(1)

NOTE:
When securing
Detent
Plate (168), there is a
tightening order to
Screws (167) as shown.
Tighten to 80-100 kg/cm
(69-86 in/lbs).

