



SERVICE PARTS LIST

BULLETIN NO.
54-32-2700

SPECIFY CATALOG NO. AND SERIAL NO. WHEN ORDERING PARTS		REVISED BULLETIN	DATE
M18™ FUEL™ 7" Polisher			Apr. 2016
CATALOG NO.	2738-20	WIRING INSTRUCTION	
STARTING SERIAL NO.	H15A	SEE REVERSE SIDE	

EXAMPLE:
00 0 Component Parts (Small #)
Are Included When Ordering
The Assembly (Large #).

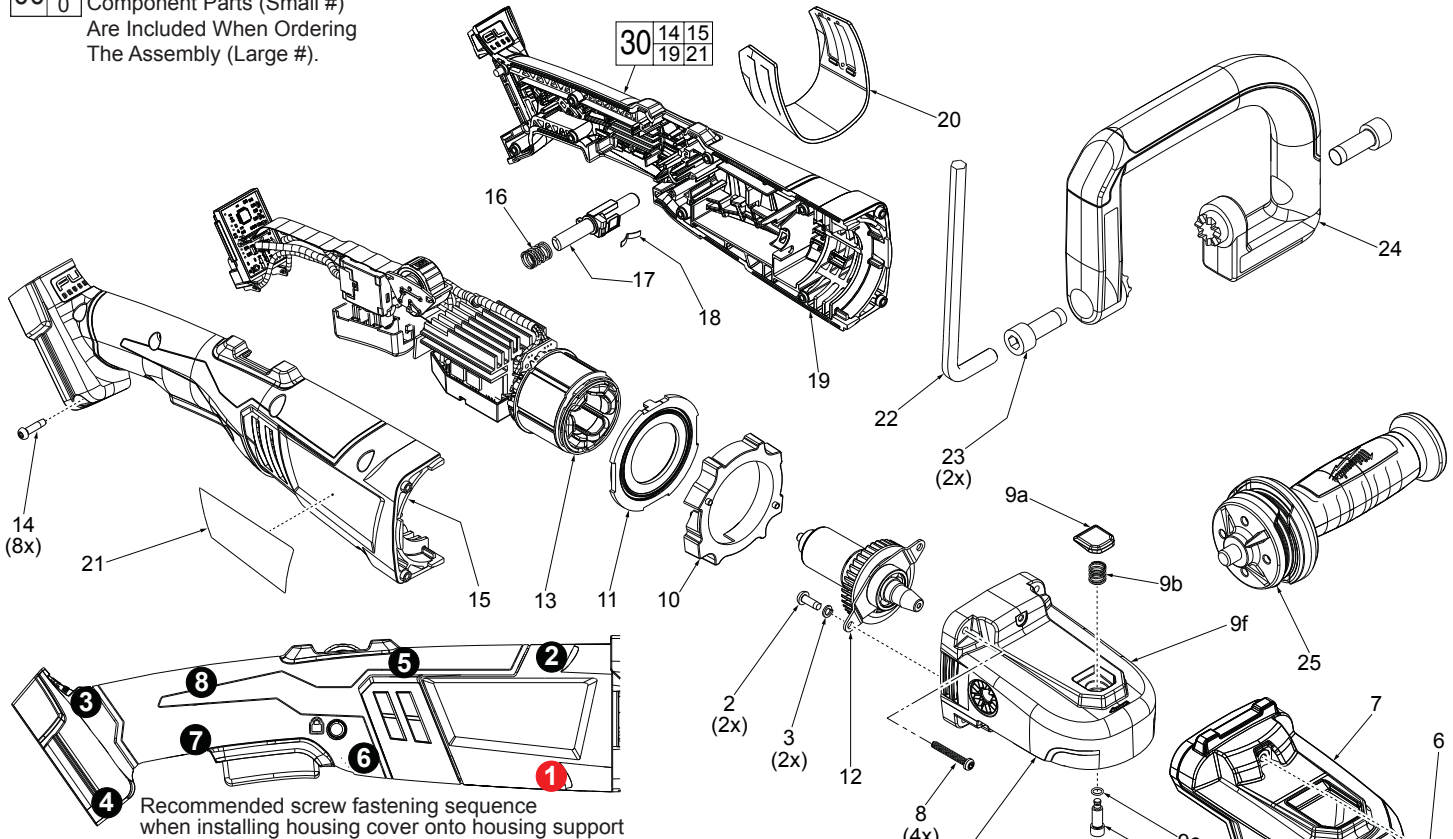


FIG.	PART NO.	DESCRIPTION OF PART	NO. REQ.
1	49-36-2792	7" Hook and Loop Backing Plate	1
2	06-82-2380	8-32 x 12mm Pan Hd. Tapt. T-20 Screw	6
3	05-90-0225	Spring Washer	6
4	14-73-0022	Spindle Hub Assembly	1
4a		5/8"-11 Output Shaft	1
4b		Dust Proof Cover	1
4c	34-80-0210	Retaining Ring	1
4d		Ball Bearing	1
4e		Spindle Hub	1
4f		Bevel Gear	1
4g	34-40-0097	O-Ring	1
5	06-82-3007	M4 x 0.7 x 8mm Pan Hd. T-20 Screw	2
6	05-88-1210	M4 x 0.7 x 14mm Pan Hd. T-20 Screw	1
7	31-55-0022	Gear Case Shroud	1
8	05-88-1300	M4 x 1.4 x 28mm Pan Hd. ST T-20 Screw	4
9	14-30-2738	Gear Case Assembly	1
9a	31-12-0042	Spindle Lock Button	1
9b	40-50-1330	Spindle Lock Spring	1
9c	34-40-0450	O-Ring	1
9d	42-60-0600	Spindle Lock Pin	1
9e	02-50-0025	Needle Bearing	1
9f		Gear Case	1
10	42-14-0005	Baffle Scroll	1
11	42-14-0007	Baffle Foot	1
12	16-01-2738	Rotor Assembly	1
13	14-20-2738	Electronics Assembly	1
14	05-88-1200	M4 x 1.4 x 16mm Pan Hd. ST T-20 Screw	8
15		Housing Cover (Right Housing)	1
16	40-50-0059	Lock On-Off Spring	1
17	42-42-0102	Lock On-Off Shuttle	1
18	40-50-0027	Plate Spring	1
19		Housing Support (Left Housing)	1
20	31-15-0222	Mesh Filter Assembly	1
21	12-20-2738	Service Nameplate	1
22	49-96-0380	5/16" Hex Key	1
23	06-10-0665	M10 x 1.5 x 28mm Hex Hd. Bolt	2
24	31-05-0037	Bail Handle	1
25	42-62-0125	AVS Side Handle	1
30	31-44-2738	Housing Assembly	1
	45-76-2738	Pad Centering Tube (Not Shown)	1

