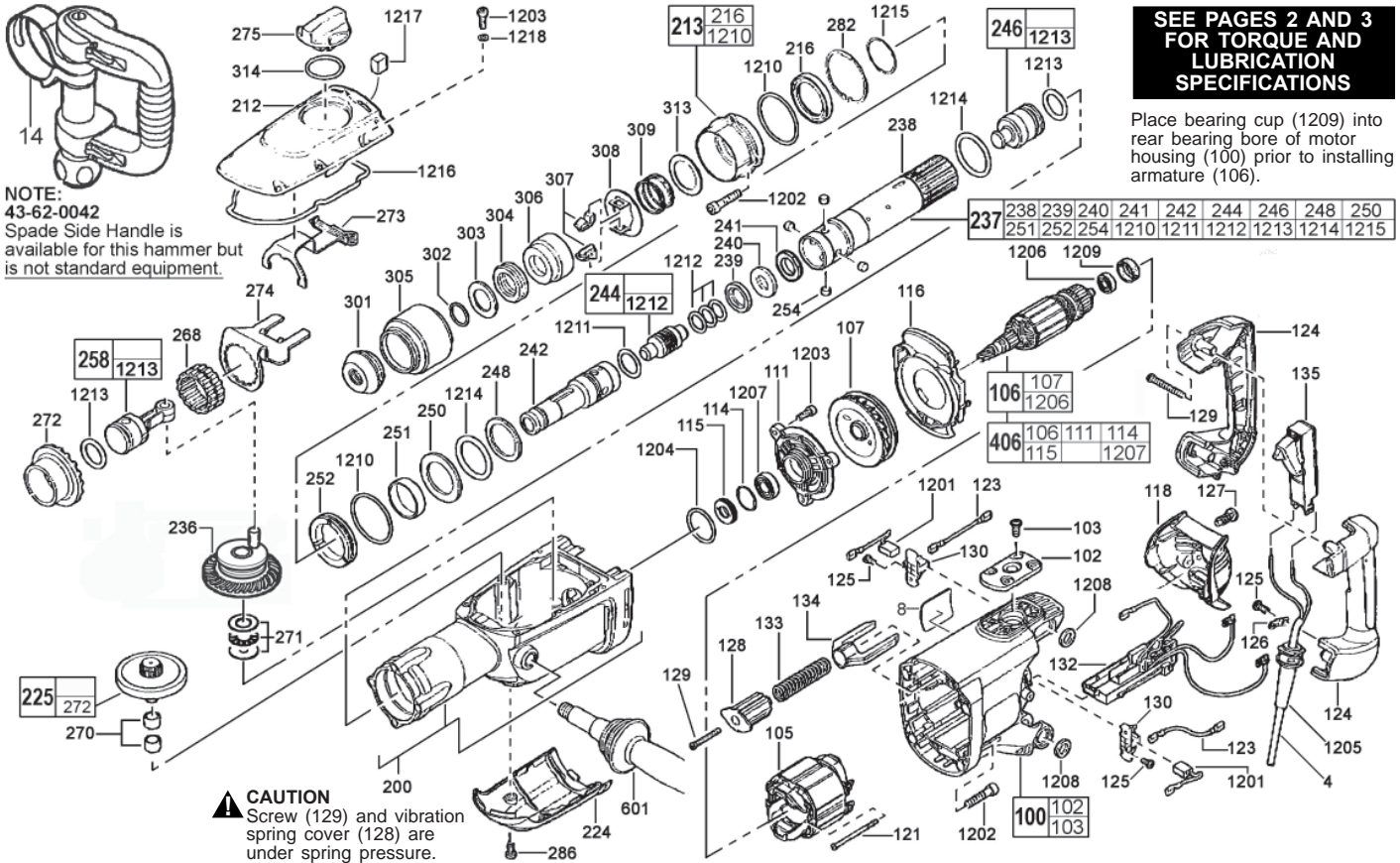




# SERVICE PARTS LIST

**BULLETIN NO.**  
**54-24-6076**

SPECIFY CATALOG NO. AND SERIAL NO. WHEN ORDERING PARTS		REVISED BULLETIN	DATE
<b>SDS MAX ROTARY HAMMER</b>		54-24-6075	Mar. 2013
CATALOG NO. <b>5342-20</b>	SERIAL NUMBER <b>A50B</b>	WIRING INSTRUCTION <b>58-01-0195</b>	



**SEE PAGES 2 AND 3 FOR TORQUE AND LUBRICATION SPECIFICATIONS**

Place bearing cup (1209) into rear bearing bore of motor housing (100) prior to installing armature (106).

FIG.	PART NO.	DESCRIPTION OF PART	NO. REQ.
4	22-64-0022	CORD SET	1
8	12-20-5342	SERVICE NAMEPLATE KIT	1
100	31-50-0033	MOTOR HOUSING	1
102	42-92-0106	SIDE HANDLE PLATE	1
103	05-78-0070	SCREW - SIDE HANDLE PLATE	4
105	18-11-0050	FIELD	1
106	16-10-0140	ARMATURE ASSEMBLY	1
107	22-84-0442	FAN	1
111	28-28-0118	BEARING END PLATE	1
114	44-90-0019	RETAINING RING	1
115	44-40-0042	SEAL NUT	1
116	42-14-0105	AIR DEFLECTION RING	1
118	31-15-0051	SERVICING LID	1
121	05-78-0071	SCREW - FIELD	2
123	23-94-0031	WIRE - RED	2
124	31-15-0052	D-HANDLE SET	1
125	05-78-0072	SCREW	4
126	31-17-0110	STRAIN RELIEF CLAMP	1
127	05-78-0073	SCREW - SERVICING LID	2
128	31-15-0053	COVER - VIBRATION SPRING	1
129	05-78-0074	SCREW	5
130	22-20-0027	BRUSH HOLDER	2
132	22-75-0080	DIAL SWITCH	1
133	40-50-0041	SPRING - VIBRATION	1
134	31-10-0130	VIBRATION LEVER	1
135	23-66-0033	SWITCH - ON/OFF	1
200	31-40-0033	GEAR BOX WITH SPINDLE SLEEVE BEARING	1
212	31-15-0064	COVER - UPPER GEAR BOX	1
213	30-60-0031	SEAL RETAINER	1
216	43-44-0062	SEAL RING	1
224	31-15-0062	COVER - LOWER GEAR BOX	1
225	32-75-0107	GEAR CLUTCH	1
236	36-17-0062	CRANK ASSEMBLY	1
237	38-50-0047	SPINDLE ASSEMBLY	1
238	38-50-0044	SPINDLE SLEEVE	1
239	45-88-0052	THRUST COLLAR	1
240	34-40-0061	BACK PRESSURE O-RING	1
241	45-88-0185	WASHER	1
242	44-82-0076	STRIKER GUIDE	1
244	45-56-2528	STRIKER	1
246	44-82-0074	RAM	1
248	45-88-0053	ATTACHMENT WASHER (.118 THICK)	1
250	45-88-0054	WASHER (.154 THICK)	1
251	44-96-0132	ROLLER RACE	1
252	44-90-0018	THRUST COLLAR	1
254	44-96-0133	ROLLER	4
258	44-62-0053	PISTON	1

FIG.	PART NO.	DESCRIPTION OF PART	NO. REQ.
268	42-76-0015	SET COLLAR	1
270	02-50-1213	NEEDLE BEARING	2
271	02-80-0117	THRUST BEARING WITH WASHERS	1
272	-----	SPINDLE BEVEL GEAR	1
273	44-66-0016	ADJUSTING PLATE ASSEMBLY	1
274	44-66-0017	LOCKING PLATE	1
275	44-10-0012	LEVER	1
282	44-90-0016	RETAINING RING	1
286	05-81-0703	SCREW - LOWER GEAR BOX COVER	2
301	42-52-0058	END COVER CAP	1
302	44-90-0022	RETAINING RING	1
303	45-88-0058	DAMPING ELEMENT	1
304	44-90-0009	DAMPING RING	1
305	45-22-0052	SLEEVE	1
306	45-22-0053	INTERLOCK SLEEVE	1
307	44-55-0015	INTERLOCK ELEMENT	2
308	44-66-0018	INTERLOCK PLATE	1
309	40-50-0043	PRESSURE SPRING	1
313	45-88-0062	WASHER	1
314	34-40-0066	O-RING	1
406	16-10-0145	ARMATURE ASSEMBLY WITH BEARING	1
601	43-62-0043	END PLATE	1
1201	22-16-0026	AUXILIARY SIDE HANDLE	1
1202	05-81-0701	CARBON BRUSH SET PKG. (2)	2
1203	05-81-0702	SCREW M8 x 40	8
1204	05-81-0702	SCREW M5 x 16	9
1205	34-40-0062	O-RING - GEAR BOX	1
1206	44-76-0051	CORD PROTECTOR	1
1207	02-04-0061	BALL BEARING	1
1207	02-04-0062	BALL BEARING	1
1208	34-40-0063	O-RING - MOTOR HOUSING	4
1209	22-72-0200	BEARING CUP	1
1210	34-40-0064	O-RING	2
1211	34-40-0071	O-RING - STRIKER GUIDE	1
1212	34-40-0072	O-RING - STRIKER	3
1213	34-40-0073	O-RING	2
1214	34-40-0074	O-RING - SPINDLE SLEEVE	1
1215	44-90-0017	RETAINING RING	1
1216	43-44-0063	GASKET - GEAR BOX COVER	1
1218	45-88-0056	WASHER - GEAR BOX COVER	6
	48-55-5337	CARRYING CASE (NOT SHOWN)	1

◆=Component of the 14-46-0041 MAINTENANCE SET (NOT SHOWN)

**MILWAUKEE ELECTRIC TOOL CORPORATION**  
13135 W. LISBON RD., BROOKFIELD, WI 53005  
Drwg. 1