

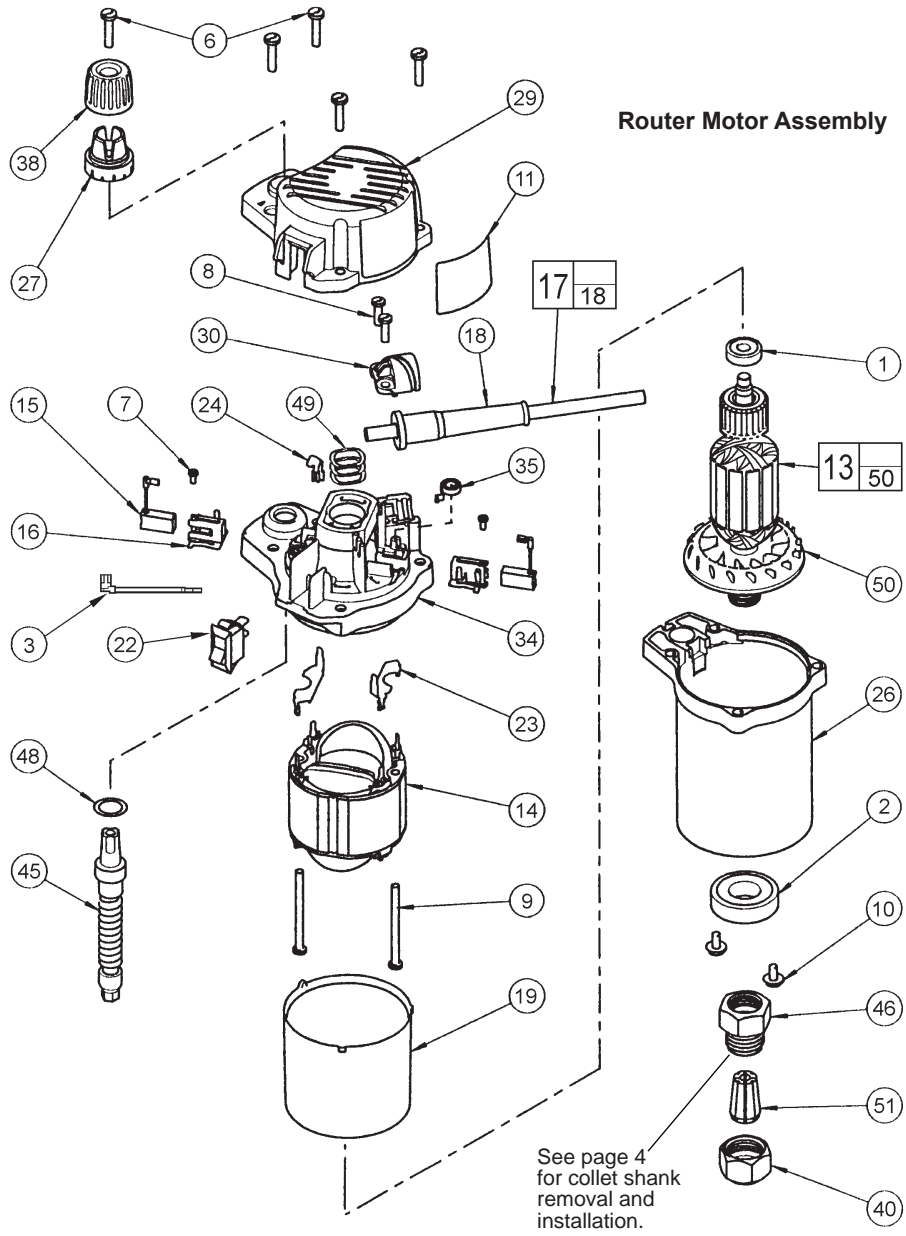


SERVICE PARTS LIST

BULLETIN NO.
54-37-0126

SPECIFY CATALOG NO. AND SERIAL NO. WHEN ORDERING PARTS		REVISED BULLETIN 54-37-0125	DATE Apr. 2010
1-3/4 H.P. BODY GRIP ROUTER			
CATALOG NO. 5615-20/5615-29	SERIAL NUMBER 279B	WIRING INSTRUCTION 58-01-0705	

EXAMPLE:
00 0 Component Parts (Small #)
Are Included When Ordering
The Assembly (Large #).
★ = Part number change from
previous service parts list.



See page 4
for collet shank
removal and
installation.

FIG.	PART NO.	DESCRIPTION OF PART	QTY.
1	02-04-0852	Ball Bearing	(1)
★ 2	02-04-2006	Ball Bearing	(1)
★ 3	23-94-0040	Leadwire Assembly	(1)
6	06-82-5574	10-24 x 7/8" Pan Hd. Slit. Tapt. T-25	(5)
7	06-82-7212	4-20 x 1/4" Pan Hd. Slit. Plast. T-10	(2)
8	06-82-7270	8-16 x 5/8" Pan Hd. Slit. Plast. T-20	(2)
9	06-82-7455	8-16 x 2-3/8" Pan Hd. Slit. Plast. T-20	(2)
11	12-20-0145	Service Nameplate Kit	(1)
★ 13	16-30-0011	Armature	(1)
14	18-30-1010	Field	(1)
15	22-16-0410	Carbon Brush	(2)
16	22-22-0165	Brush Tube	(2)
17	22-64-7777	Cord Set Assembly	(1)
18	44-76-0210	Cord Protector	(1)
19	23-16-0405	Field Insulator	(1)
★ 22	23-66-2280	Rocker Switch	(1)
23	23-74-0025	Field Terminal	(2)
24	23-74-0055	Connector Terminal	(1)
26	28-50-0105	Motor Housing	(1)
27	31-01-0025	Depth Scale	(1)
29	31-15-0065	Motor Cover	(1)
30	31-17-0070	Cord Clamp	(1)
★ 34	31-50-0106	Motor Frame	(1)

FIG.	PART NO.	DESCRIPTION OF PART	QTY.
35	40-50-0190	Brush Spring	(2)
★ 38	43-98-0531	Depth Knob	(1)
40	44-40-0095	Collet Nut (2 supplied with tool)	(1)
45	45-08-0030	Depth Shaft Assembly	(1)
★ 46	45-10-0081	Collet Shank (See reverse side for servicing)	(1)
48	45-88-0045	Washer	(1)
49	45-88-0577	Wave Spring Washer	(3)
50	22-84-0380	Fan Assembly	(1)
51	48-66-0985	1/4" Collet	(1)
51	48-66-1010	1/2" Collet	(1)
	49-96-0365	1-1/8" Open End Wrench (Not Shown)	(2)

FIG. 16,34 NOTES:
When servicing the motor frame (34) and the brush tube (16) has to be removed, replace with a new brush tube.

48-10-5615
Router BodyGrip Assembly

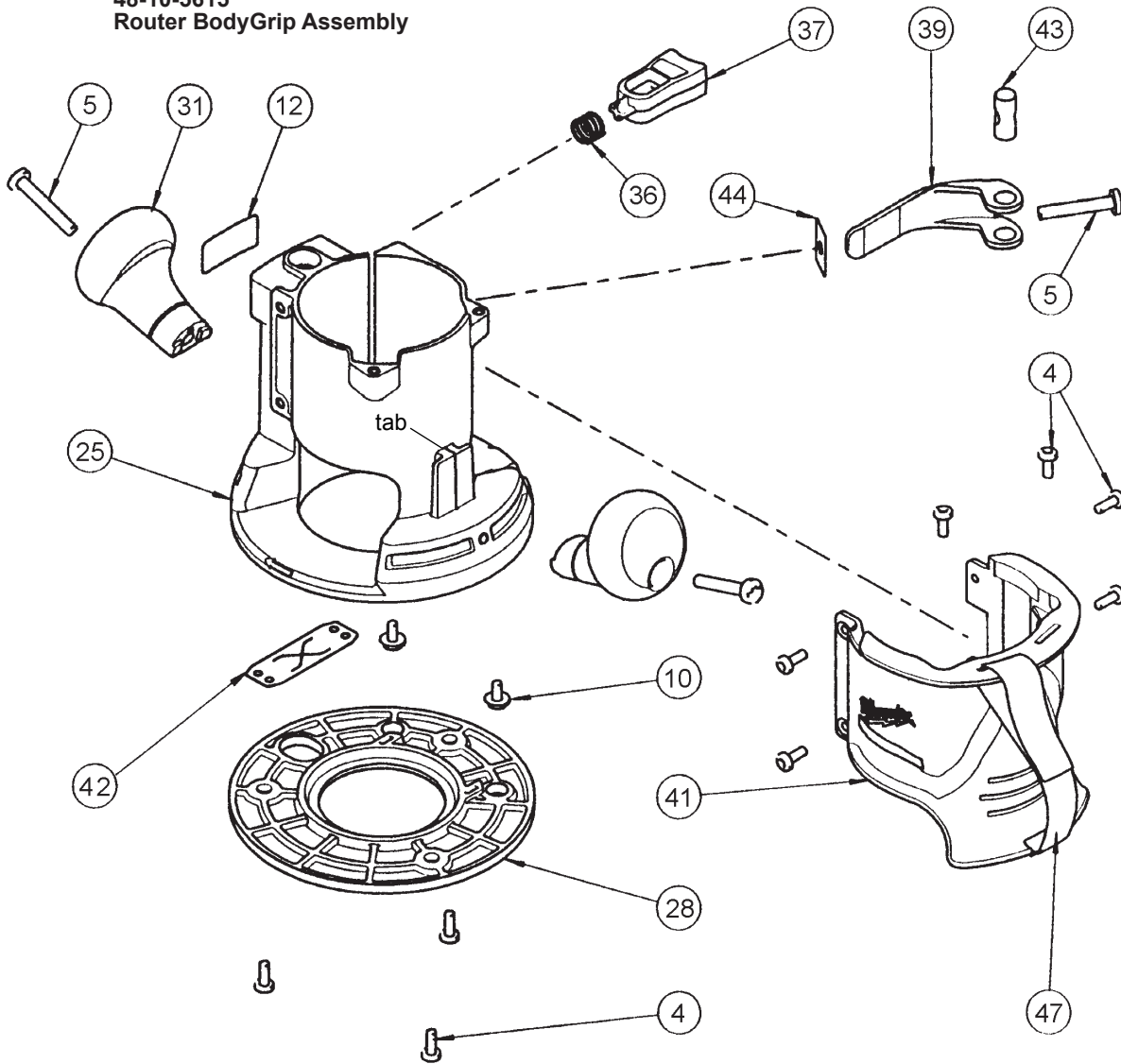


FIG.	PART NO.	DESCRIPTION OF PART	QTY.
4	06-82-5314	10-24 x 1/2" Slit. Pan Hd. Tapt. T-25	(9)
5	06-82-5514	1/4-20 x 1-1/2" Slit. Pan Hd. Tapt. T-30	(3)
10	06-82-8865	10-32 x 7/16" Pan Hd. Tapt. Sems T-25	(4)
12	12-25-0235	Nameplate	(1)
25	26-06-0100	Base	(1)
28	49-54-1045	Sub Base	(1)
31	31-44-0130	Knob Handle	(2)
36	40-50-4005	Compression Spring	(1)
★ 37	42-42-0126	Release Button	(1)
39	44-10-0435	Base Clamp Lever	(1)
41	44-52-0020	Body Grip	(1)
★ 42	45-12-0015	Dust Shield	(1)
43	44-60-0095	Thru Pin	(1)
44	44-66-0035	Wear Plate	(1)
47	45-56-0225	Handle Strap Assembly	(1)

FIG. NOTES:

- 5,39 Clamping force for the base clamp lever (39) is adjusted with base clamp screw (5). Tighten the screw using 10-20 lbs. force to close the lever to the locked position. Motor unit must be in base when checking force.
- 25,36,37 To service the release button (37) and the compression spring (36) a long, thin tool like a flat blade screwdriver must be used. From the bottom of the base (25), insert the screwdriver into the cavity located under the release button. Press on the button detent to release.
- 25,41,47 The metal clip from the handle strap (47) is to be placed around the tab on the base (25). The body grip (41) is to be placed onto the base from the top so that the cavity on the inside of the body grip slips over the tab on the base, securing the handle strap.
- 39,43 Apply a thin coat of "L" grease, No. 49-08-4170, to the pivot surface areas of the base clamp lever (39). Apply a thin coat of grease to the surface of the thru pin (43).

**48-10-5600
Router Plunge
Base Assembly**

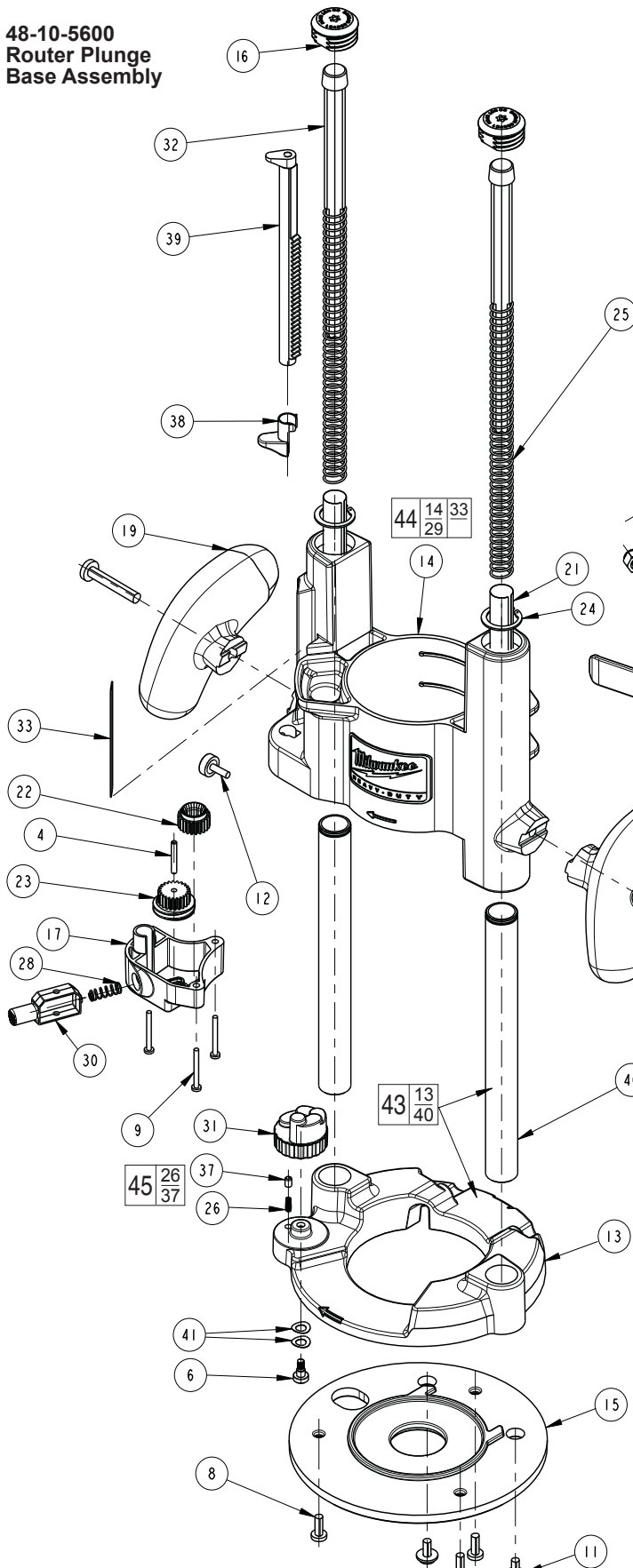


FIG.	PART NO.	DESCRIPTION OF PART	QTY.
1	05-81-1005	Screw 8-32 x .394 T20	(1)
2	06-14-0080	Bolt 1/4-20 x 1.75 T30	(1)
3	06-57-6075	Lock Nut	(1)
★ 4	06-65-0700	Gear Pin	(1)
6	06-75-0410	Shoulder Bolt M4 T25	(1)
7	06-81-1980	Plunge Lock Screw	(1)
8	06-82-5314	10-24 x .5 Pan Tap Torx	(3)
9	06-82-5315	Screw ST M3 x 26.5 mm T10	(3)
10	06-82-5514	T30, 1/4 - 20 x 1.50 Taptite	(2)
11	06-82-8865	Slotted Torx Taptite Screw	(2)
12	06-87-0100	Depth Rod Locking Screw	(1)
13	-----	Base	(1)
14	-----	Motor Carriage	(1)
15	-----	Subbase (See Chart)	(1)
16	31-12-0380	Spring Cap	(2)
17	31-40-0190	Gear Housing	(1)
18	31-44-2530	Right Handle	(1)
19	31-44-2535	Left Handle	(1)
20	31-52-0120	Plunge Lock Lever	(1)
21	31-55-0500	Spring Shield Tube	(2)
22	32-40-2380	Gear with Hex	(1)
23	32-40-2385	Gear with Screw	(1)
24	34-60-3705	Retaining Ring	(2)
25	40-50-1395	Plunge Spring	(2)
26	-----	Spring	(1)
27	40-50-1410	Torsion Spring	(1)
28	40-50-1415	Spring	(1)
29	-----	Bushing (not shown)	(4)
30	42-42-1050	Gear Release Button	(1)
31	42-46-0250	Turret	(1)
32	43-56-0915	Spring Guide	(2)
33	43-82-0175	Scale	(1)
34	44-10-0435	Base Clamp Lever	(1)
35	44-60-0095	Pin, Thru	(1)
36	44-66-0035	Wear Plate	(1)
37	-----	Detent Pin	(1)
38	44-72-0100	Depth Rod Pointer	(1)
39	44-94-0460	Depth Stop Rod	(1)
40	-----	Plunge Rod	(2)
★ 41	45-88-0995	Spring Washer	(2)
42	45-88-0996	Spring Washer	(1)
43	14-46-5600	Base and Plunge Rod Kit	(1)
44	14-46-5605	Motor Carriage Kit	(1)
45	14-46-5610	Spring Assembly	(1)

The following sub-bases (15) are compatible with this base:

Cat. No.	Outside dia.	Center hole dia.	Color
49-54-1027	6"	1-3/16"	Clear
49-54-1028	6"	2-1/2"	Clear
49-54-1040	6"	1-3/16"	Black
49-54-1045	6"	2-1/2"	Black

WARNING! Spring Caps (16) are under pressure from Plunge Springs (25) and could become projectiles when loosened. Use caution when removing. Eye injury could occur. Always wear safety glasses.

Plunger Lock Screw (7) is LH Thread – tightens in counter-clockwise direction

14, 16, 25 Caution! Before removing Spring Caps (16) always release/bring the Motor Carriage (14) to the upward most height setting to minimize spring (25) tension.

14, 16, 25 If the Plunge Springs (25) or Motor Carriage (14) need to be serviced, remove Spring Caps (16) with a T-40 Tamper Proof style driver. Note: Always cover / hold your hand over the spring caps (16) when removing or installing springs (25). Always wear safety glasses.

34, 35 Apply a thin coat of "L" grease, No. 49-08-4170, to the pivot surface areas of the base clamp lever (34). Apply a thin coat of grease to the surface of the thru pin (35).

14, 20, 24, 40 To aid in the removal of Retaining Rings (24) from the Plunger Rods (40). (springs (25) and plunger caps (16) removed previously) Push Plunge Lock Lever (20) down and Lower Motor Carriage (14) down until Retaining Rings (24) are just below the internal Spring Cap threads inside the Motor Carriage.