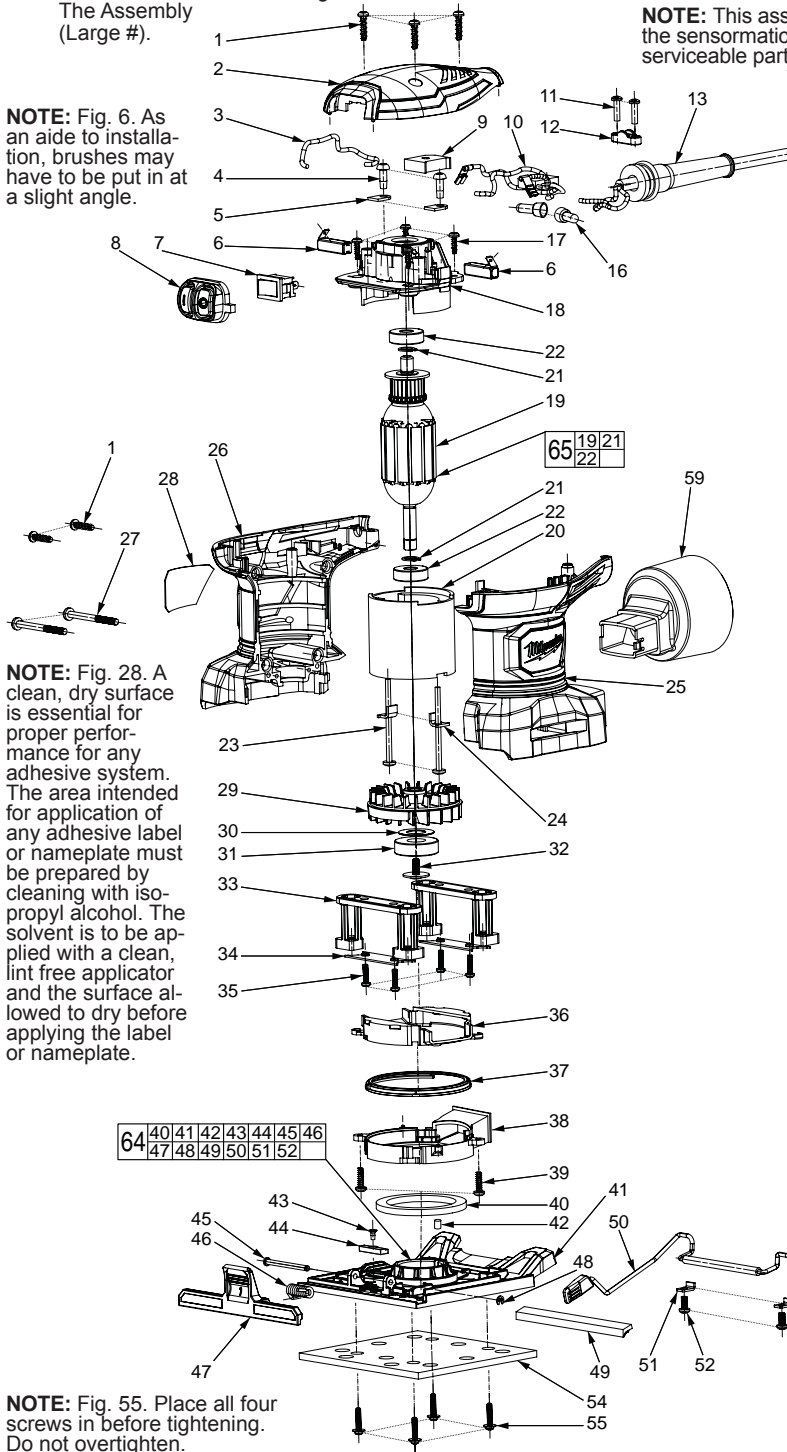


|  |                                 |   |           |
|--|---------------------------------|---|-----------|
| SPECIFY CATALOG NO. AND SERIAL NO. WHEN ORDERING PARTS |                                 | REVISED BULLETIN                              | DATE      |
| <b>1/4 SHEET PALM SANDER</b>                           |                                 |   | Aug. 2015 |
| CATALOG NO. <b>6033-21</b>                             | STARTING SERIAL NO. <b>G65A</b> | WIRING INSTRUCTION<br><b>See Reverse Side</b> |           |

**EXAMPLE:**  
Component Parts (Small #)  
Are Included When Ordering  
The Assembly  
(Large #).

**NOTE:** Fig. 6. As an aide to installation, brushes may have to be put in at a slight angle.

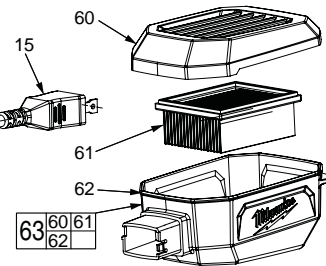
**NOTE:** This assembly contains the sensormatic label. It is not a serviceable part.



**NOTE:** Fig. 28. A clean, dry surface is essential for proper performance for any adhesive system. The area intended for application of any adhesive label or nameplate must be prepared by cleaning with isopropyl alcohol. The solvent is to be applied with a clean, lint free applicator and the surface allowed to dry before applying the label or nameplate.

**NOTE:** Fig. 55. Place all four screws in before tightening. Do not overtighten.

**NOTE:** Figs. 54, 56, and 57 must be oriented as shown, with two holes at front and three at back.



| FIG. | PART NO.   | DESCRIPTION OF PART                   | NO. REQ. |
|------|------------|---------------------------------------|----------|
| 1    | 06-81-0145 | 8-18 x 5/8" Pan Hd. T-15 Screw        | 5        |
| 2    | 31-12-0025 | Top Cap                               | 1        |
| 3    | 23-94-2661 | Black Wire                            | 1        |
| 4    | 05-74-0995 | 8-16 x 1/2" Pan Hd. T-20 Screw        | 2        |
| 5    | 22-38-0180 | Brush Clamp                           | 2        |
| 6    | 22-18-1170 | Carbon Brush Assembly w/Shunt Wire    | 2        |
| 7    | 23-66-0245 | Switch                                | 1        |
| 8    | 42-38-0165 | Rubber Cap                            | 1        |
| 9    | 23-38-2855 | Rectifier                             | 1        |
| 10   | 22-80-0106 | Electronics Assembly                  | 1        |
| 11   | 06-81-0150 | 6-19 x 5/8" Pan Hd. T-15 Screw        | 2        |
| 12   | 31-17-0530 | Cord Clamp                            | 1        |
| 13   | 44-76-0315 | Strain Relief                         | 1        |
| 15   | 22-64-1210 | Cord                                  | 1        |
| 16   | 22-56-5317 | Wire Connector (see wiring)           | 2        |
| 17   | 06-81-0135 | 6-19 x 7/16" Pan Hd. T-15 Screw       | 4        |
| 18   | 31-12-0390 | Bearing Housing                       | 1        |
| 19   | -----      | Armature                              | 1        |
| 20   | 18-10-0142 | Field                                 | 1        |
| 21   | -----      | Retaining Ring                        | 2        |
| 22   | -----      | Bearing                               | 2        |
| 23   | 06-81-0130 | 8-10 x 2-1/8" Pan Hd. T-20 Screw      | 2        |
| 24   | 42-70-1005 | Field Retaining Clip                  | 2        |
| 25   | 31-50-0595 | Housing Support                       | 1        |
| 26   | 31-50-0605 | Housing Cover                         | 1        |
| 27   | 06-82-0170 | M4 x 43mm Pan Hd. T-20 ST Screw       | 2        |
| 28   | 12-20-6033 | Service Nameplate                     | 1        |
| 29   | 22-84-0045 | Fan                                   | 1        |
| 30   | 45-88-1970 | Washer                                | 1        |
| 31   | 02-04-5155 | Bearing                               | 1        |
| 32   | 06-81-0165 | 8-32 x 3/8" Pan Washer Hd. T-20 Screw | 1        |
| 33   | 45-60-0035 | Cushion Post                          | 2        |
| 34   | 44-52-0960 | Retaining Clip                        | 2        |
| 35   | 05-81-0195 | M3 x 12mm Pan Hd. Screw               | 4        |
| 36   | 31-05-0125 | Fan Cap                               | 1        |
| 37   | 31-05-0135 | Fan Ring                              | 1        |
| 38   | 31-05-0145 | Fan Guide                             | 1        |
| 39   | 06-81-0115 | 6-19 x 1/2" Pan Hd. T-15 Screw        | 2        |
| 40   | 31-76-0155 | Dust Shield                           | 1        |
| 41   | -----      | Base Plate                            | 1        |
| 42   | -----      | Plug                                  | 1        |
| 43   | -----      | M2.6 x 6mm Flat Hd. Philips Screw     | 1        |
| 44   | -----      | Counterweight                         | 1        |
| 45   | -----      | Pin                                   | 1        |
| 46   | -----      | Torsion Spring                        | 1        |
| 47   | -----      | Front Clamp Bar                       | 1        |
| 48   | -----      | E-Ring                                | 1        |
| 49   | -----      | Cushion                               | 1        |
| 50   | -----      | Rear Spring Clamp Assembly            | 1        |
| 51   | -----      | Retaining Plate                       | 2        |
| 52   | -----      | 6-19 x 5/16" Torx T-15 Screw          | 2        |
| 54   | 44-66-0475 | Aluminum Plate w/ Cushion Pad         | 1        |
| 55   | 05-74-0305 | M3 x 15mm Pan Hd. T-20 Screw          | 4        |
| 56   | -----      | 100 Grit Sand Paper                   | 1        |
| 57   | -----      | 150 Grit Sand Paper                   | 1        |
| 58   | 44-66-0465 | Paper Punch                           | 1        |
| 59   | 31-03-0075 | VAC Adapter                           | 1        |
| 60   | -----      | Dust Box Cover w/ Rubber Gasket       | 1        |
| 61   | -----      | Dust Box Filter                       | 1        |
| 62   | -----      | Dust Box Body                         | 1        |
| 63   | 31-15-0640 | Dust Box Assembly                     | 1        |
| 64   | 31-06-0135 | Base Plate Assembly                   | 1        |
| 65   | 16-07-0160 | Armature Assembly                     | 1        |