



SERVICE PARTS LIST

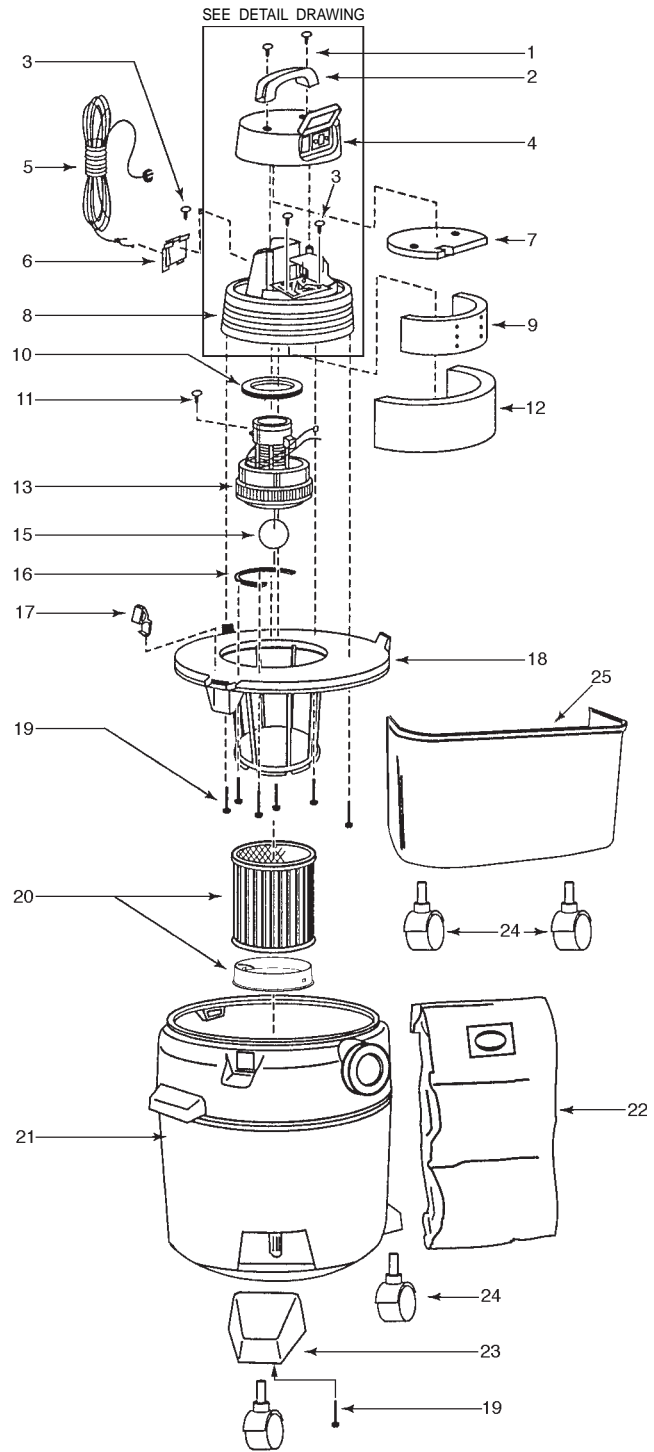
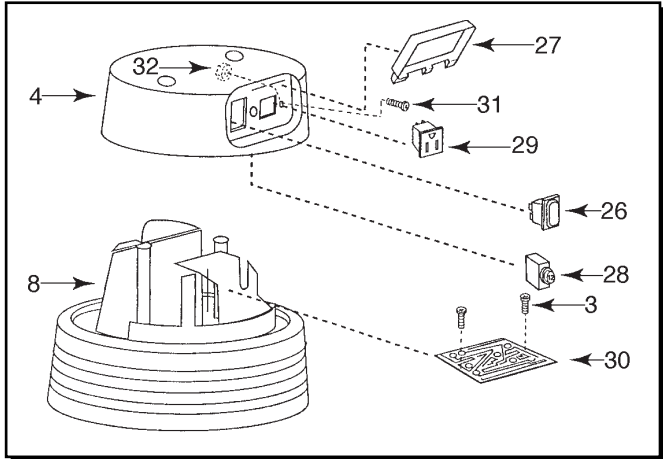
BULLETIN NO.
54-05-0076

| | | | |
|--|---------------------------------------|---|-----------|
| SPECIFY CATALOG NO. AND SERIAL NO. WHEN ORDERING PARTS | | REVISED BULLETIN | DATE |
| 7.5 GALLON WET OR DRY VACUUM CLEANER | | 54-05-0075 | Nov. 2014 |
| CATALOG NO. 8936-20 | STARTING SERIAL NO. SERIES S-2 | WIRING INSTRUCTION 58-01-1161 | |

EXAMPLE:

00 0 Component Parts (Small #) Are Included
When Ordering The Assembly (Large #).

★=Part number change from previous service parts list.



| FIG. | PART NO. | DESCRIPTION OF PART | QTY. |
|------|------------|---------------------------------|------|
| 1 | 06-81-5010 | 1/4 x 3/4 Type AB Screw | 2 |
| 2 | 43-62-1185 | Handle | 1 |
| 3 | 06-81-5390 | 8 x 1/2 Type AB Screw | 3 |
| ★ 4 | 31-15-0532 | Motor Housing Cover | 1 |
| 5 | 22-64-0910 | Cord | 1 |
| 6 | 44-76-0300 | Cord Retainer | 1 |
| 7 | 43-84-0880 | Cover Insert | 1 |
| 8 | 31-50-1460 | Motor Housing | 1 |
| 9 | 43-76-0630 | Inner Form Insert | 1 |
| 10 | 43-44-1050 | Upper Motor Gasket | 1 |
| 11 | 06-95-4000 | 10-24 x 1/2 Ground Screw | 1 |
| 12 | 43-76-0640 | Outer Form Insert | 1 |
| 13 | 23-30-0340 | Motor | 1 |
| 15 | 42-46-0100 | Ball Float | 1 |
| 16 | 43-44-0010 | Lower Motor Gasket | 1 |
| 17 | 42-68-0690 | Lid Latch | 3 |
| 18 | 31-15-0540 | Lid Cage Assembly | 1 |
| 19 | 06-95-4010 | 10 x 24 Type AB Screw | 10 |
| 20 | 49-90-1830 | Cartridge Filter | 1 |
| ★ 21 | 42-51-0450 | Tank Assembly | 1 |
| 22 | 49-90-0445 | High Efficiency Filter (5) Pack | 1 |
| 23 | 42-36-1840 | Caster Bracket | 2 |
| 24 | 45-94-0420 | Caster | 4 |
| 25 | 42-51-0255 | Tool Basket | 1 |
| ★ 26 | 23-66-2552 | Switch | 1 |
| 27 | 42-92-1210 | Switch Cover | 1 |
| 28 | 22-36-0210 | Circuit Breaker | 1 |
| 29 | 23-33-0490 | Receptacle | 1 |
| 30 | 22-09-0760 | Circuit Board Assembly | 1 |
| 31 | 06-81-8705 | 10-24 x 1/2 Nylon Screw | 1 |
| 32 | 06-55-1050 | 10-24 Hex Nut | 1 |

Items Not Shown

| | | |
|------------|-----------------------|---|
| 10-20-8936 | French Warning Label | 1 |
| 10-20-8938 | Spanish Warning Label | 1 |
| 10-20-9000 | Auto Label | 1 |
| 10-20-9010 | Receptacle Label | 1 |
| 10-20-9020 | Circuit Breaker Label | 1 |
| 10-20-9030 | Switch Label | 1 |
| 12-99-8936 | Service Nameplate | 1 |
| 22-18-0195 | Carbon Brush Assembly | 1 |
| 49-90-0155 | Hose Adapter | 1 |
| 49-90-0286 | Poly Filter | 1 |