



SERVICE PARTS LIST

BULLETIN NO.
54-24-0678

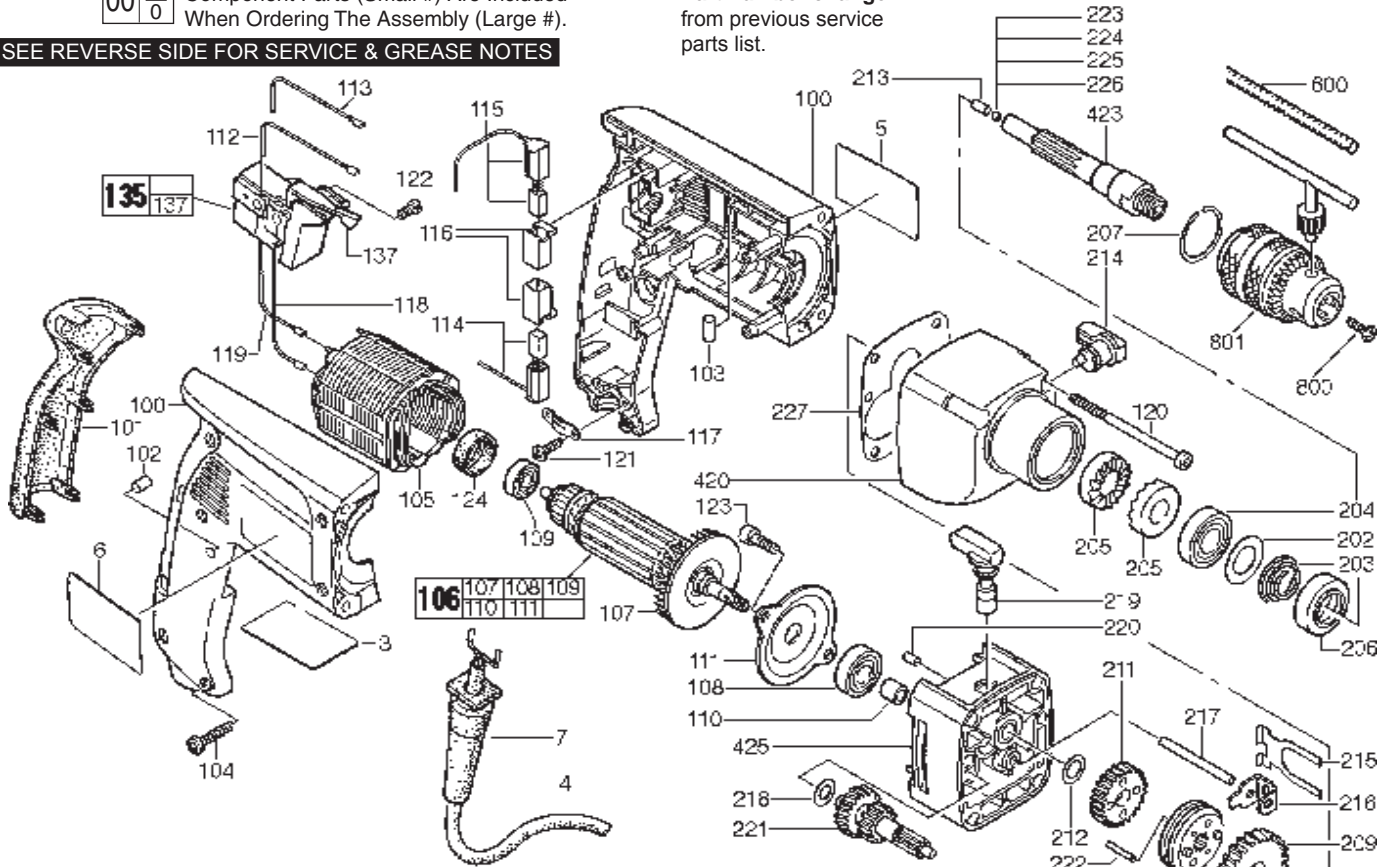
| | | | |
|--|----------------|---|--------------------|
| SPECIFY CATALOG NO. AND SERIAL NO. WHEN ORDERING PARTS | | REVISED BULLETIN 54-24-0677 | DATE Sept. 2006 |
| 1/2" HAMMER-DRILL | | | |
| CATALOG NO. | 5378-20 | SERIAL NUMBER | 897E |
| | | WIRING INSTRUCTION 58-01-1151 | |

00 0

EXAMPLE:
Component Parts (Small #) Are Included
When Ordering The Assembly (Large #).

★ = Part number change
from previous service
parts list.

SEE REVERSE SIDE FOR SERVICE & GREASE NOTES



| FIG. | PART NO. | DESCRIPTION OF PART | QTY. |
|-------|------------|------------------------|------|
| 3 | 12-20-0415 | Nameplate | 1 |
| 4 | 22-64-0515 | Cord Set | 1 |
| 5 | 10-07-5378 | Product Label | 1 |
| 6 | 10-07-6225 | Warning Label | 1 |
| 7 | 44-76-0290 | Strain Relief | 1 |
| 100 | 14-38-0445 | Housing Assembly | 1 |
| 101 | 44-52-0585 | Handle Cushion | 1 |
| 102 | 45-30-0055 | Retaining Slug | 1 |
| 103 | 45-30-0195 | Retaining Slug | 1 |
| 104 | 05-78-0715 | Screw | 2 |
| ★ 105 | 18-07-0155 | Service Field | 1 |
| ★ 106 | 16-07-0155 | Service Armature | 1 |
| 107 | 22-84-0930 | Fan | 1 |
| 108 | 02-04-1825 | Ball Bearing | 1 |
| 109 | 02-04-1820 | Ball Bearing | 1 |
| 110 | 42-40-1045 | Bushing | 1 |
| 111 | 42-92-0070 | Bearing Cover | 1 |
| 112 | 23-94-1045 | Wire | 1 |
| 113 | 23-94-1050 | Wire | 1 |
| 114 | 22-22-0885 | Brush Assembly - Lower | 1 |
| 115 | 22-22-0890 | Brush Assembly - Upper | 1 |
| 116 | 22-20-0225 | Brush Holder | 2 |
| 117 | 31-17-0240 | Cord Clamp | 1 |
| 118 | 23-94-1055 | Wire | 1 |
| 119 | 23-94-1060 | Wire | 1 |
| 120 | 06-82-9640 | Screw | 4 |
| 121 | 05-78-0720 | Screw | 2 |
| 122 | 05-81-0932 | Screw | 1 |
| 123 | 05-81-0960 | Screw | 2 |
| 124 | 45-22-0540 | Rubber Sleeve | 1 |
| 135 | 23-66-1692 | Switch | 1 |
| ★ 137 | ----- | Switch Lever | 1 |
| 202 | 45-88-8295 | Washer | 1 |
| 203 | 40-50-8890 | Spring | 1 |
| 204 | 02-04-1830 | Ball Bearing | 1 |
| 205 | 44-84-0295 | Ratchet | 2 |
| 206 | 44-90-0004 | Seal Ring | 1 |
| 207 | 44-90-0365 | Snap Ring (Int.) | 1 |
| 208 | 45-88-1300 | Washer | 1 |
| 209 | 32-75-1220 | Spindle Gear | 1 |

| FIG. | PART NO. | DESCRIPTION OF PART | QTY. |
|------|------------|-----------------------|------|
| 210 | 44-90-4505 | Shift Ring | 1 |
| 211 | 32-75-1227 | Spindle Gear | 1 |
| 212 | 45-88-8335 | Thrust Washer | 1 |
| 213 | 44-60-1490 | Pin | 1 |
| 214 | 44-10-0095 | Shift Lever | 1 |
| 215 | 40-50-8355 | Retaining Spring | 1 |
| 216 | 42-70-0790 | Shifting Clip | 1 |
| 217 | 44-60-1470 | Pin | 1 |
| 218 | 45-88-8345 | Thrust Washer | 1 |
| 219 | 44-10-0105 | Shift Lever | 1 |
| 220 | 44-60-1500 | Pin | 1 |
| 221 | 32-60-2637 | Reduction Gear | 1 |
| 222 | 44-60-1475 | Pin | 2 |
| 223 | 02-02-0110 | Ball (4.0 Diameter) | 1 |
| 224 | 02-02-0115 | Ball (3.8 Diameter) | 1 |
| 225 | 02-02-0125 | Ball (3.6 Diameter) | 1 |
| 226 | 02-02-0105 | Ball (3.4 Diameter) | 1 |
| 227 | 43-44-0345 | Gasket | 1 |
| 420 | 31-40-0020 | Gearcase | 1 |
| 423 | 38-50-0042 | Spindle | 1 |
| 425 | 26-28-1865 | Diaphragm | 1 |
| 600 | 43-46-0172 | Depth Gauge | 1 |
| 800 | 05-80-0430 | Chuck Retaining Screw | 1 |
| 801 | 48-66-5185 | Chuck | 1 |
| | 49-15-5300 | Side Handle | 1 |
| | 10-15-0270 | Cord Tag | 1 |
| | 48-66-2110 | Chuck Key | 1 |
| | 48-66-4040 | Chuck Key Holder | 1 |

FIG. NOTES:
223-226 The correct size ball must be chosen to properly shim out the end play in the spindle. Spindle is to have a small amount of end play without being tight.