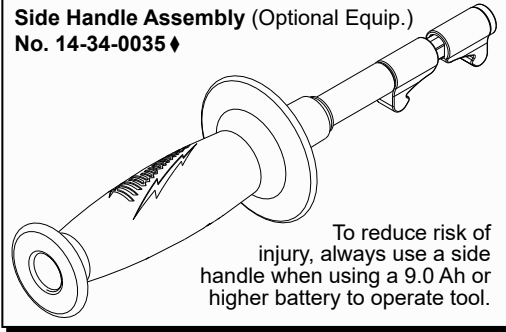




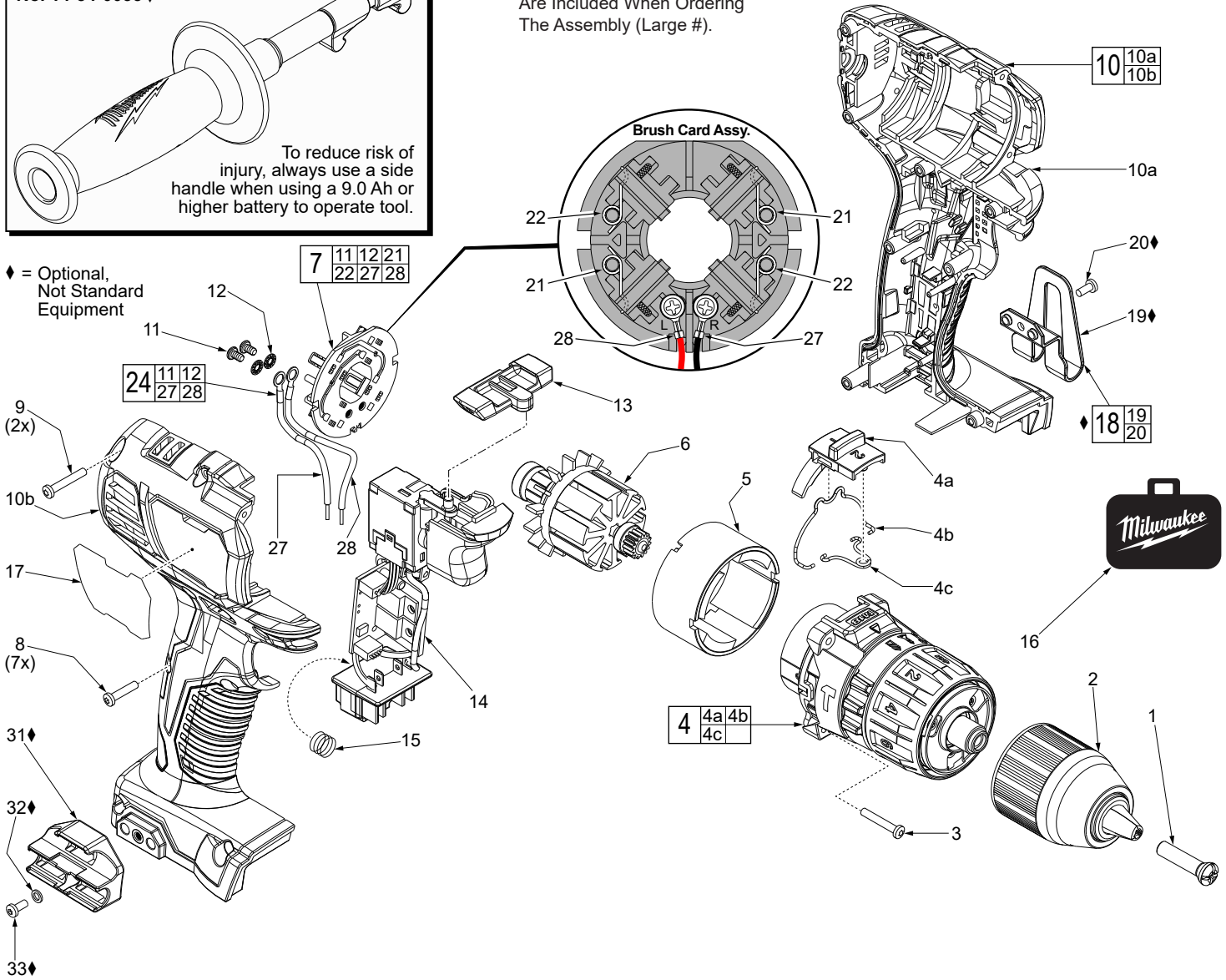
SERVICE PARTS LIST

BULLETIN NO.
54-24-2510

| | | | |
|--|---|---|------------|
| SPECIFY CATALOG NO. AND SERIAL NO. WHEN ORDERING PARTS | | REVISED BULLETIN | DATE |
| M18™ 1/2" HAMMER-DRILL | | | Sept. 2017 |
| CATALOG NO. 2607-20 | STARTING SERIAL NO. F25A or F25D | WIRING INSTRUCTION SEE PAGE 3 | |



EXAMPLE:
Component Parts (Small #)
Are Included When Ordering
The Assembly (Large #).



| FIG. | PART NO. | DESCRIPTION OF PART | NO. REQ. |
|------|------------|---|----------|
| 1 | 05-88-1500 | M6 x 27mm LH Chuck Screw | 1 |
| 2 | 42-66-2607 | Keyless 1/2" Chuck | 1 |
| 3 | 06-82-0135 | M3 x 18mm Pan Hd. Plastite T-10 Screw | 4 |
| 4 | 14-29-2607 | Gear Box Assembly | 1 |
| 4a | 45-24-2607 | Speed Selector Slide | 1 |
| 4b | 44-10-2607 | Speed Change Lever | 1 |
| 4c | 40-50-2607 | Torsion Spring | 1 |
| 5 | 18-01-3020 | Service Field | 1 |
| 6 | 16-07-2610 | Service Armature | 1 |
| 7 | 22-22-2602 | Brush Card Assembly | 1 |
| 8 | 06-82-6350 | M3 x 16mm Pan Hd. Plastite T-10 Screw | 7 |
| 9 | 05-88-0675 | M3 x 20mm Pan Hd. Plastite T-10 Screw | 2 |
| 10 | 31-44-2607 | Handle Assembly | 1 |
| 10a | ----- | Left Handle Halve | 1 |
| 10b | ----- | Right Handle Halve | 1 |
| 11 | 05-88-0928 | M3 x 5mm Pan Hd. T-10 Screw | 2 |
| 12 | 45-88-1980 | Spring Washer | 2 |
| 13 | 42-42-2607 | Forward/Reverse Shuttle | 1 |
| 14 | 14-20-2612 | Electronics Assembly (Consists of Switch, PCBA, LED and Battery Terminal Block) | 1 |

| FIG. | PART NO. | DESCRIPTION OF PART | NO. REQ. |
|------|------------|--|----------|
| 15 | 40-50-1090 | Terminal Block Spring | 1 |
| 16 | 42-55-2606 | Blow Molded Carrying Case | 1 |
| 17 | 12-20-2607 | Service Nameplate | 1 |
| 18 | 42-70-2653 | Belt Clip Assembly, <i>Optional</i> | 1 |
| 19 | ----- | Belt Clip, <i>Optional</i> | 1 |
| 20 | ----- | Belt Clip Screw, <i>Optional</i> | 1 |
| 21 | ----- | Brush Spring - Right Hand | 2 |
| 22 | ----- | Brush Spring - Left Hand | 2 |
| 24 | 14-46-2394 | Leadwire/Screw/Washer Kit | 1 |
| 27 | ----- | Leadwire Assembly - Black - Right Side | 1 |
| 28 | ----- | Leadwire Assembly - Red - Left Side | 1 |
| 31 | 43-72-0550 | Bit Holder, <i>Optional</i> | 1 |
| 32 | 45-88-1935 | Washer, <i>Optional</i> | 1 |
| 33 | 06-82-5275 | 6-32 x 5/16" Pan Hd. T-15 Screw, <i>Optional</i> | 1 |