



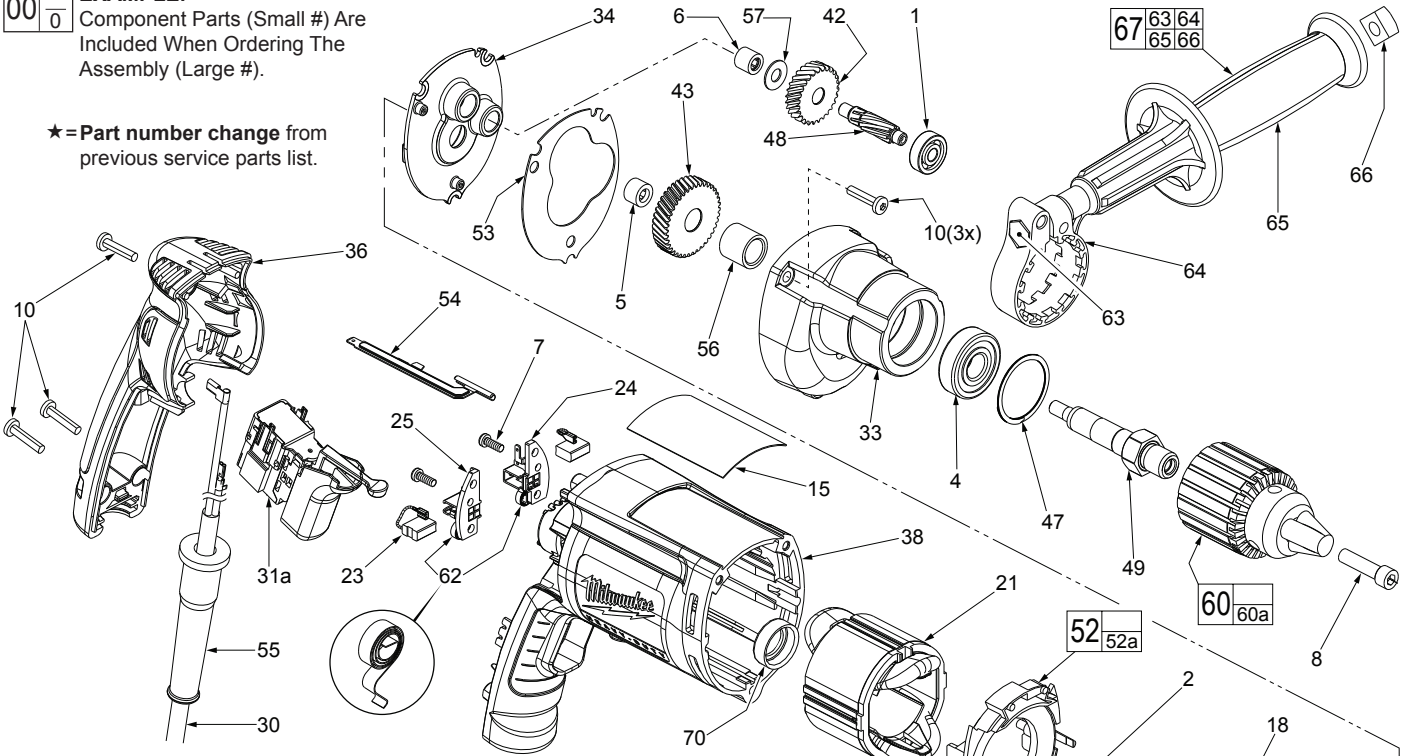
SERVICE PARTS LIST

BULLETIN NO.
54-06-0128

| SPECIFY CATALOG NO. AND SERIAL NO. WHEN ORDERING PARTS | | REVISED BULLETIN | DATE |
|--|----------------|----------------------------|------------|
| 1/2" PISTOL GRIP DRILL | | 54-06-0127 | Sept. 2013 |
| CATALOG NO. | 0299-20 | WIRING INSTRUCTION | |
| STARTING SERIAL NO. | A15D | See Pages 2 & 3 | |

EXAMPLE:
Component Parts (Small #) Are Included When Ordering The Assembly (Large #).

★ = Part number change from previous service parts list.



| FIG. | PART NO. | DESCRIPTION OF PART | NO. REQ. |
|------|------------|--------------------------------------|----------|
| 1 | 02-04-0640 | Ball Bearing | (1) |
| 2 | 02-04-0645 | Ball Bearing | (1) |
| 3 | 02-04-0852 | Ball Bearing | (1) |
| 4 | 02-04-1229 | Ball Bearing | (1) |
| 5 | 02-50-1611 | Needle Bearing | (1) |
| 6 | 02-50-2400 | Needle Bearing | (1) |
| 7 | 05-88-1610 | M3.5 x 10 Pan Hd. Plastite T-10 | (2) |
| 8 | 06-75-3150 | 1/4-20 x 1 L.H. Thread Slit. Screw | (1) |
| 10 | 06-82-7275 | 7-18 x 3/4 Slotted Plastite T-20 | (6) |
| 15 | 12-99-2565 | Service Nameplate | (1) |
| 18 | 16-10-2210 | Armature | (1) |
| 21 | 18-07-7220 | Field | (1) |
| 23 | 22-18-1310 | Brush Assembly | (2) |
| 24 | 22-20-0090 | Left Brush Holder | (1) |
| 25 | 22-20-0095 | Right Brush Holder | (1) |
| 30 | 22-64-1130 | Cord Set | (1) |
| 31a | 23-66-2605 | Switch (Defond) See page 2 wiring | (1) |
| 31b | 23-66-2585 | Switch (Marquardt) See page 3 wiring | (1) |
| 33 | 28-14-2390 | Gearcase | (1) |
| 34 | 28-28-2320 | Diaphragm | (1) |
| 36 | 31-15-2020 | Handle Halve | (1) |
| ★ 38 | 31-50-0527 | Motor Housing | (1) |
| 42 | 32-40-0100 | Intermediate Gear | (1) |
| 43 | 32-75-0100 | Spindle Gear | (1) |
| 47 | 34-80-2300 | Retaining Ring | (1) |
| 48 | 36-66-0100 | Intermediate Shaft | (1) |
| 49 | 38-50-5735 | Spindle | (1) |
| 52 | 42-14-0450 | Baffle Assembly | (1) |
| 52a | 45-30-0030 | Slug (Not shown) | (2) |
| 53 | 43-44-0985 | Gasket | (1) |
| 54 | 44-60-1700 | Ground Pin | (1) |
| 55 | 44-76-0210 | Cord Protector | (1) |
| 56 | 45-36-1095 | Spindle Spacer | (1) |
| 57 | 45-88-7990 | Thrust Washer | (1) |
| 60 | 48-66-1355 | 1/2" Chuck | (1) |
| 60a | 48-66-3280 | Chuck Key (Not Shown) | (1) |
| 62 | 23-52-1610 | Brush Spring | (2) |
| 63 | 06-75-2850 | 3/8-16 x 5-1/2" Hex Cap Screw | (1) |
| 64 | 42-68-0800 | Side Handle Clamp | (1) |
| 65 | 43-62-0845 | Side Handle | (1) |

| FIG. | PART NO. | DESCRIPTION OF PART | NO. REQ. |
|------|------------|--|----------|
| 66 | 06-54-0325 | 3/8-16 Square Nut | (1) |
| 67 | 49-15-0265 | Side Handle Assembly | (1) |
| ★ 70 | 43-86-0125 | Bearing Cup | (1) |
| | 23-94-0490 | White Leadwire Assy. (See pages 2 & 3) | (1) |
| | 23-94-0495 | Red Leadwire Assy. (See pages 2 & 3) | (1) |
| | 48-66-4040 | Chuck Key Holder (Not Shown) | (1) |

LUBRICATION (Type "Y" Grease, No. 49-08-5270)

- Place 5 gm. (.02 oz.) of grease on top of the inserted intermediate ball bearing (1) and on the intermediate pinion (48).
- After inserting all gearing, place 13 gm. (.46 oz.) of grease at the armature pinion location in the gearcase (33) and fill to the top of the intermediate gear (42). Grease must contact at least 25% of the intermediate gear teeth.

Before assembly, lightly coat all press fit areas with lightweight spindle oil.

FIG. NOTES:

- 4,43 Support the output ball bearing inside the gearcase before pressing off the spindle gear.
- 5,6 Needle bearings to be pressed flush to .010 under flush from the end which has the vendors identification.

MILWAUKEE ELECTRIC TOOL CORPORATION
13135 W. LISBON RD., BROOKFIELD, WI 53005
Dwg. 1