



SERVICE PARTS LIST

BULLETIN NO.
54-06-2615

SPECIFY CATALOG NO. AND SERIAL NO. WHEN ORDERING PARTS		REVISED BULLETIN	DATE
18 VOLT 3/8" RAD DRILL			Oct. 2010
CATALOG NO.	2615-20	STARTING SERIAL NO.	C60A
		WIRING INSTRUCTION SEE REVERSE SIDE	

EXAMPLE:

00	0
----	---

 Component Parts (Small #) Are Included
 When Ordering The Assembly (Large #).

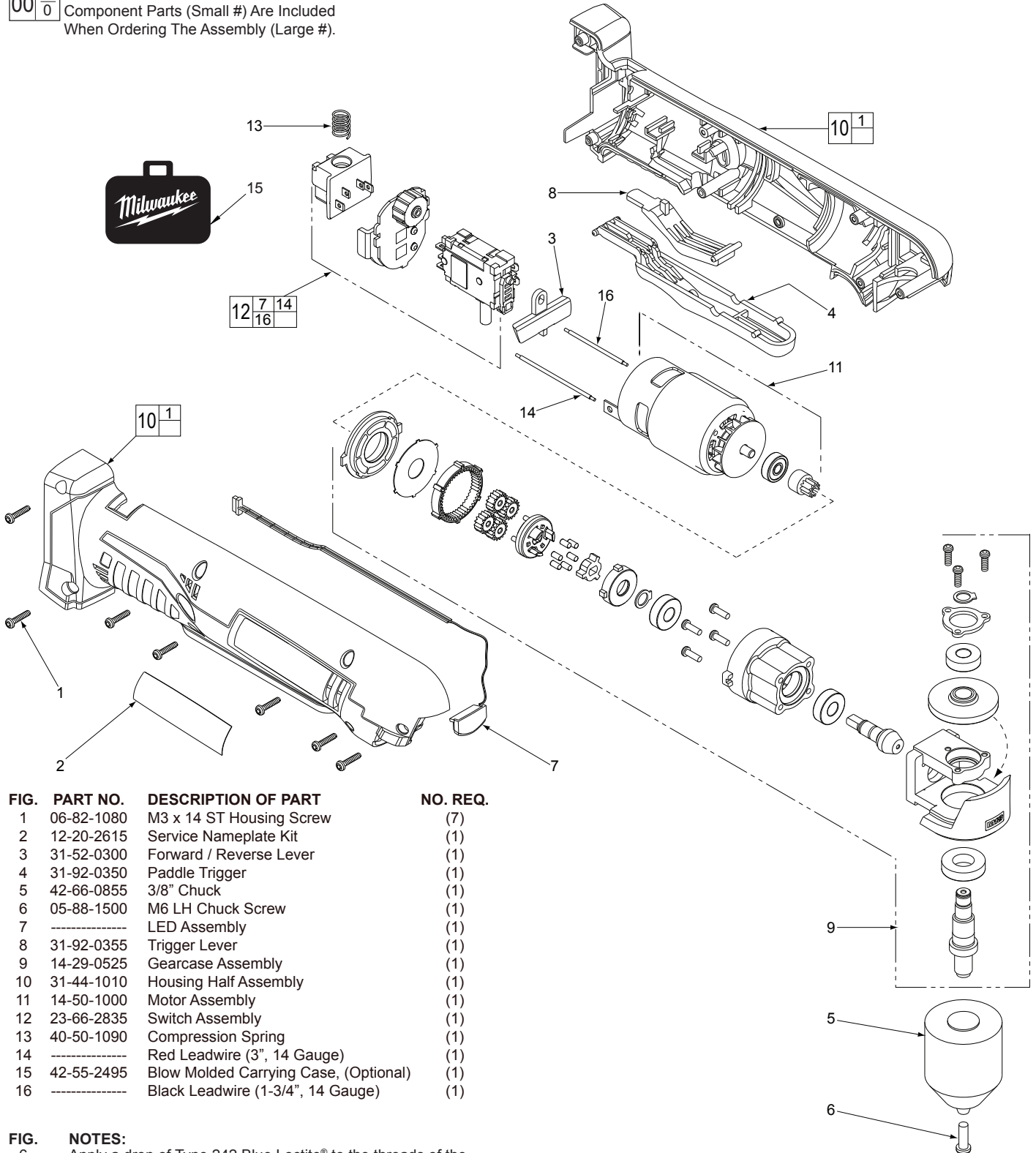


FIG.	PART NO.	DESCRIPTION OF PART	NO. REQ.
	06-82-1080	M3 x 14 ST Housing Screw	(7)
	12-20-2615	Service Nameplate Kit	(1)
	31-52-0300	Forward / Reverse Lever	(1)
	31-92-0350	Paddle Trigger	(1)
	42-66-0855	3/8" Chuck	(1)
	05-88-1500	M6 LH Chuck Screw	(1)
	-----	LED Assembly	(1)
	31-92-0355	Trigger Lever	(1)
	14-29-0525	Gearcase Assembly	(1)
	31-44-1010	Housing Half Assembly	(1)
	14-50-1000	Motor Assembly	(1)
	23-66-2835	Switch Assembly	(1)
	40-50-1090	Compression Spring	(1)
	-----	Red Leadwire (3", 14 Gauge)	(1)
	42-55-2495	Blow Molded Carrying Case, (Optional)	(1)
	-----	Black Leadwire (1-3/4", 14 Gauge)	(1)

FIG. 6 NOTES:
 Apply a drop of Type 242 Blue Loctite® to the threads of the chuck screw (6) before securing chuck (5) to the spindle .