



SERVICE PARTS LIST

BULLETIN NO.
54-42-2401

SPECIFY CATALOG NO. AND SERIAL NO. WHEN ORDERING PARTS		REVISED BULLETIN	DATE
M12™ Sub-Compact 1/4" Hex Driver		54-42-2400	Feb. 2014
CATALOG NO. 2401-20	STARTING SERIAL NO. B30B	WIRING INSTRUCTION SEE NOTES	

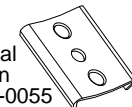
EXAMPLE:

00	0
----	---


 Component Parts (Small #) Are Included When Ordering The Assembly (Large #).

★ = Part number change from previous service parts list.

★

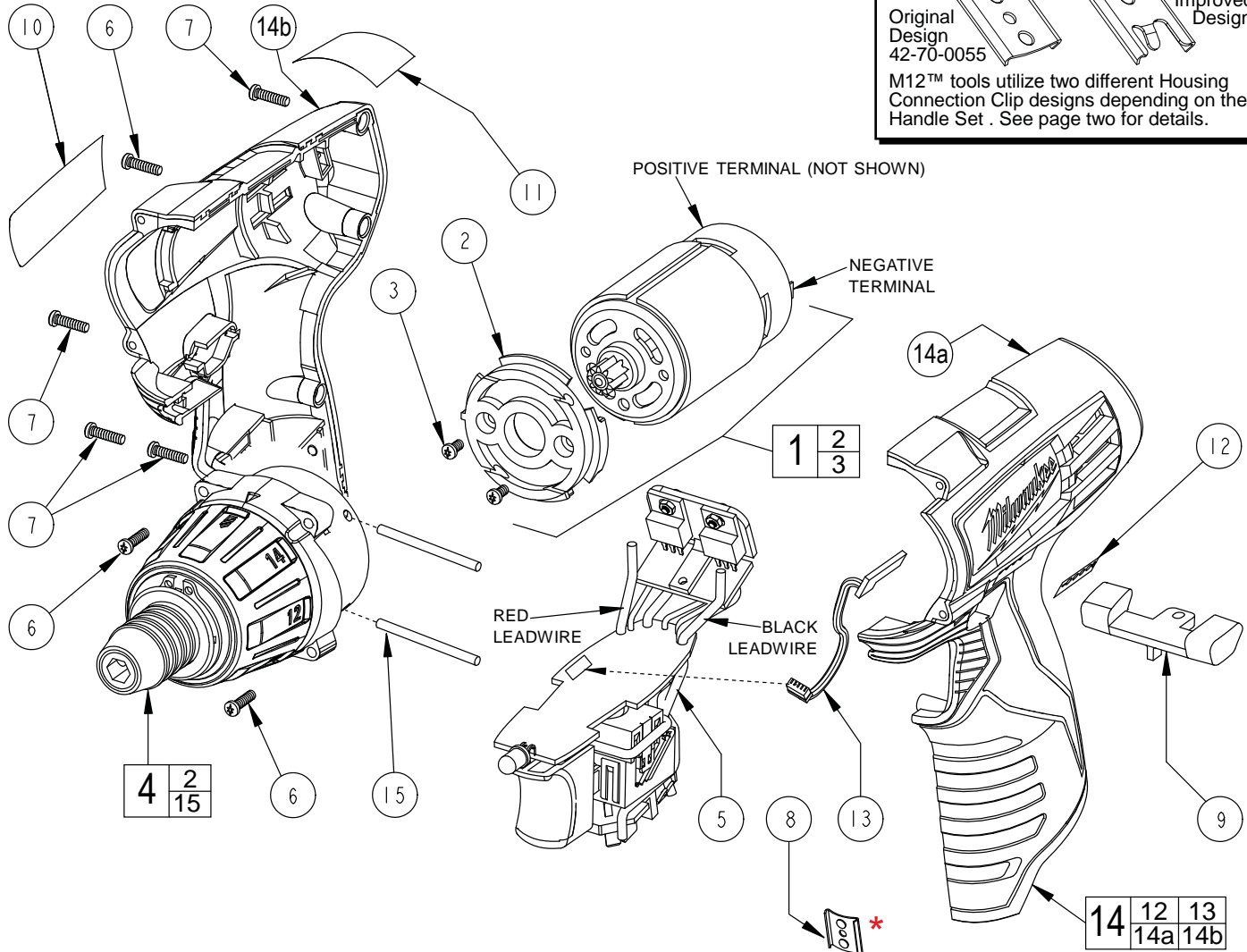


Original Design
42-70-0055



42-70-0058
Improved Design

M12™ tools utilize two different Housing Connection Clip designs depending on the Handle Set. See page two for details.



See detail above

FIG.	PART NO.	DESCRIPTION OF PART	NO. REQ.
1	23-30-0095	Motor assembly	(1)
2	44-66-0155	Motor mount plate	(1)
3	05-81-0205	Screw	(2)
4	14-29-0095	Gearcase assembly	(1)
★ 5	23-66-1096	Variable electronics switch assembly	(1)
6	06-82-2400	Screw	(5)
7	06-82-2395	Screw	(4)
8	42-70-0055	Housing Connection Clip	(1)
9	45-24-0095	Forward/reverse button	(1)
10	12-20-2400	Service nameplate	(1)
11	10-15-0955	Warning label	(1)
12	10-20-0760	Fuel gauge label	(1)
13	22-09-0075	Fuel gauge	(1)
14	31-50-2400	Housing assembly	(1)
14a	-----	Housing half- left	(1)
14b	-----	Housing half- right	(1)
15	-----	Metal pin	(2)

- NOTES:**
- 1,2,4 **IMPORTANT:** See the back side of this bulletin if servicing the motor assembly (1) or the gearcase assembly (4).
 - 3 Seating torque is to be 6-12 Kgf-cm (5-10.5 in-lbs)
 - 5, 1 Solder red lead wire from electronics module assembly (5) to positive terminal (red) of Motor Assembly. Solder black lead wire from electronics module assembly (5) to negative terminal of Motor Assembly.
 - 5, 13 Insert the fuel gauge (13) wire assembly into the electronics module assembly.